
Title:	Berth 5 Dredging and Construction
Port:	Burnie
References:	HMI 24-31
Description:	Western end berth pocket 5A deepening
Duration:	From 19/08/2024 To 11/10/2024

Services Provided:

BridgePro Engineering (**BPE**) will be using a long reach excavator on a Jack-Up Barge to undertake side casting and dredging at the western end of Burnie Berth 5 (Figure 1).

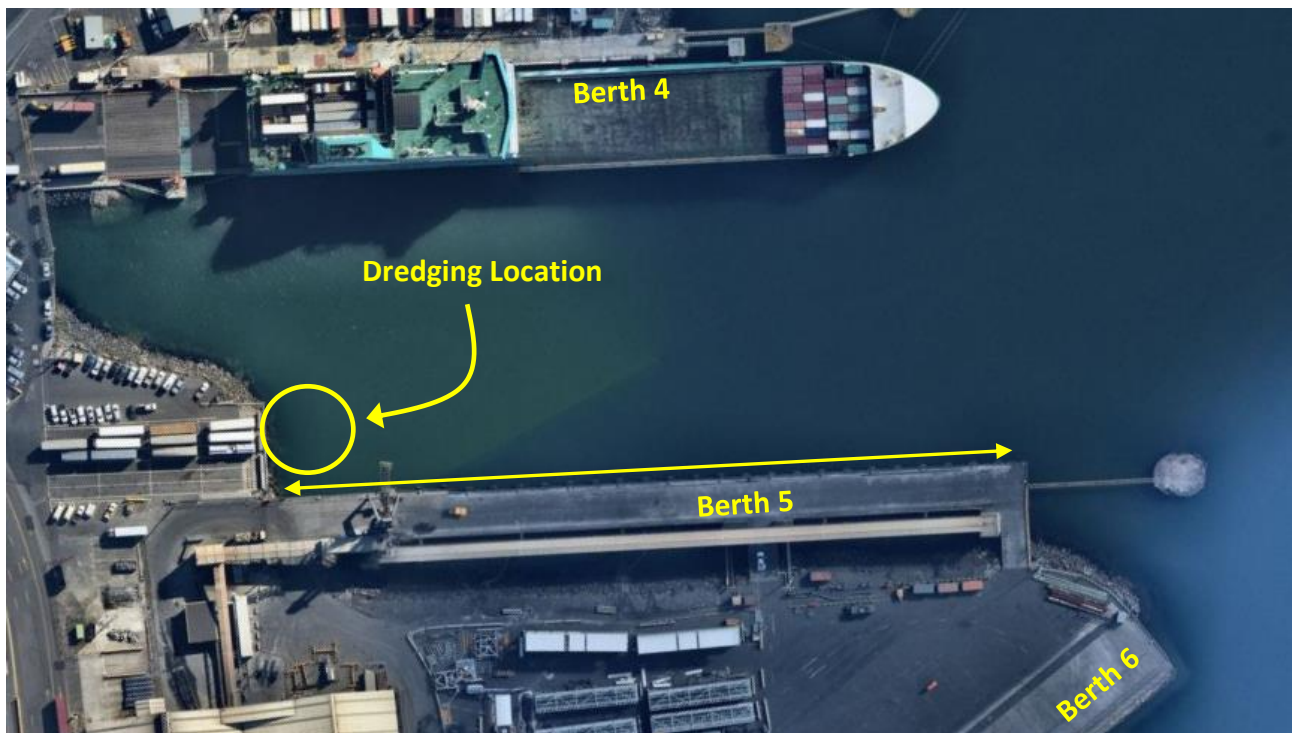


Figure 1: Dredging area

Dredged material will be loaded into skip bins on the dumb barge *Eldon* alongside the Jack-Up Barge. The *Eldon* will be towed to a berth for shore disposal.

When not dredging the Jack-Up Barge will remain jacked-up in the dredged area with the *Eldon* alongside or tied up at berth 5.

Issued By	Harbour Master - Tasmania	Date of Issue	16/09/2024	Valid Until	11/10/2024	Page 1 of 2
------------------	---------------------------	----------------------	------------	--------------------	------------	--------------------

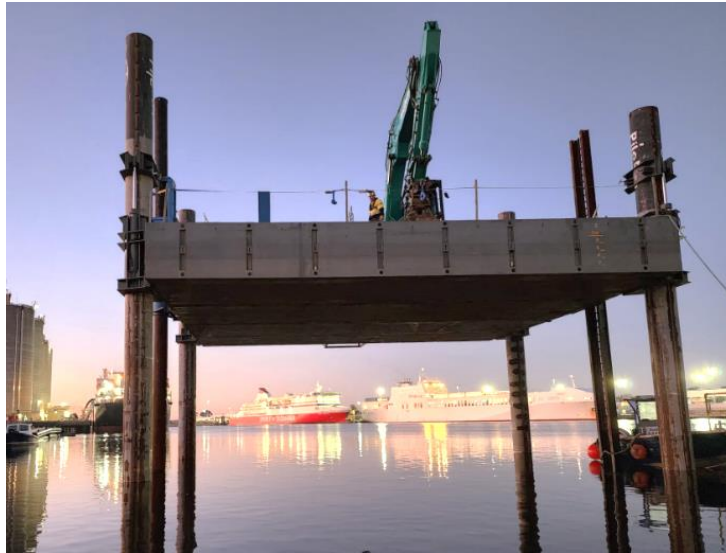


Figure 2: BPE Jack-Up Barge

Port Controls:

1. BPE are to advise BURNIE VTS on VHF Ch14 at the start, and on completion of each days work.
2. BURNIE VTS are to advise BPE of any expected movements during the day.
3. BPE are to advise BURNIE VTS by VHF Ch 14 prior to all movements of the barge ELDON to and from a berth for discharge.
4. The movement of the barge ELDON may be restricted by BURNIE VTS when other vessel movements are taking place within the port.
5. During works BPE are to maintain an active listening watch on VHF Ch14.
6. All port vessels are advised to maintain a low wash in the vicinity of the works area and keep a safe distance away from construction vessels during the hours of operation.
7. For scheduled arrival and departure of Strait Link vessels at Berth 4 **BPE** Barges and vessels at Berth 5 are to have stopped operation and be secured at the Pilot on Board (POB) time.
8. All vessels are to keep TasPorts Vessel Traffic Services (VTS) updated of any changes to their scheduled departure times specifically if the vessel wishes to depart ahead of schedule.
9. The Jack-Up Barge will be fitted with an Automatic Identification System (AIS) transponder and will have flashing yellow lights (Fl.Y) on each corner of the barge.

In event of emergency initial contacts are:

TasPorts Marine Emergency	VTS - VHF channel 16/ 14, or 6380 3013
BPE 1 st contact	Sam Murphy 0428 445 812
BPE 2 nd contact	John Nel 0460 933 483
TasPorts Project Manager	Carl Lancaster 0419 100 622

Captain A. Michael Wall
Harbour Master – Tasmania

Issued By	Harbour Master - Tasmania	Date of Issue	16/09/2024	Valid Until	11/10/2024	Page 2 of 2
------------------	---------------------------	----------------------	------------	--------------------	------------	--------------------