

---

<b>Title:</b>	<b>Berth 5 Dredging and Construction</b>
<b>Port:</b>	<b>Burnie</b>
<b>References:</b>	
<b>Description:</b>	<b>Western end berth pocket 5A deepening</b>
<b>Duration:</b>	<b>From 17/02/2025 To 7/03/2025</b>

---

### Services Provided:

BridgePro Engineering (**BPE**) will be using a long reach excavator on the Eldon Barge to undertake side casting and dredging at the western end of Burnie Berth 5 (Figure 1).

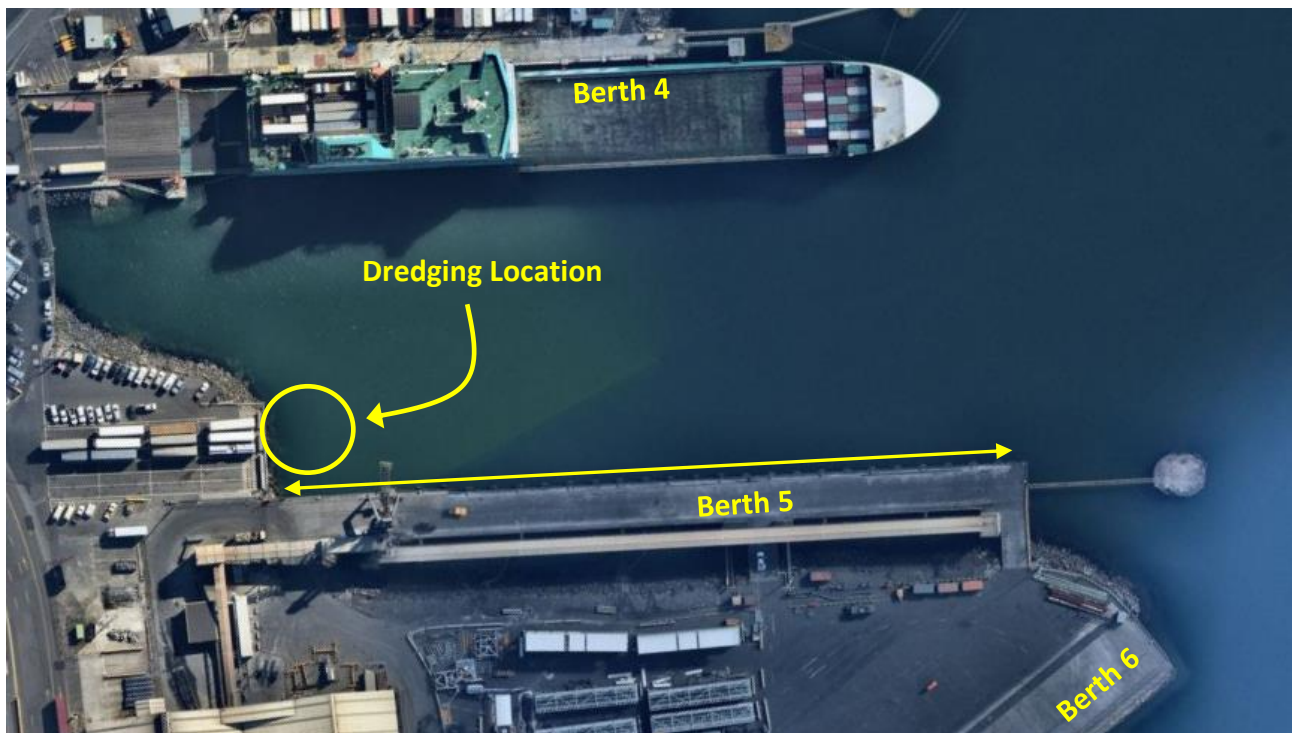


Figure 1: Dredging area

Dredged material will be side cast and not removed to shore.

The Barge *Eldon* will be towed / positioned in the dredge area by the tug vessel *Carrington*. When not dredging the *Eldon* will remain on spud legs in the dredged area, with the *Eldon* alongside or tied up at berth 5. Crew transfer will be by vessel *Sea Sprint*.

<b>Issued By</b>	Harbour Master - Tasmania	<b>Date of Issue</b>	14/02/2025	<b>Valid Until</b>	07/03/2025	<b>Page 1 of 2</b>
------------------	---------------------------	----------------------	------------	--------------------	------------	--------------------

## Port Controls:

1. BPE are to advise BURNIE VTS on VHF Ch14 at the start, and on completion of each days work.
2. BURNIE VTS are to advise BPE of any expected movements during the day.
3. BPE are to advise BURNIE VTS by VHF Ch 14 prior to all movements of the barge ELDON to and from a berth.
4. The movement of the barge ELDON may be restricted by BURNIE VTS when other vessel movements are taking place within the port.
5. During works BPE are to maintain an active listening watch on VHF Ch14.
6. All port vessels are advised to maintain a low wash in the vicinity of the works area and keep a safe distance away from construction vessels during the hours of operation.
7. For scheduled arrival and departure of Strait Link vessels at Berth 4 **BPE** Barges and vessels at Berth 5 are to have stopped operation and be secured at the Pilot on Board (POB) time.
8. All vessels are to keep TasPorts Vessel Traffic Services (VTS) updated of any changes to their scheduled departure times specifically if the vessel wishes to depart ahead of schedule.
9. The barge ELDON will be fitted with an Automatic Identification System (AIS) transponder and will have flashing yellow lights (Fl.Y) on each corner of the barge.

### In event of emergency initial contacts are:

BURNIE VTS	VTS - VHF channel 16/ 14, or 6380 3013	
BPE 1 <sup>st</sup> contact	Sam Murphy	0428 445 812
BPE 2 <sup>nd</sup> contact	John Nel	0460 933 483
TasPorts Project Manager	Carl Lancaster	0419 100 622
TasPorts 2 <sup>nd</sup> contact	Josh Whiteley	0408 728 819

Captain A. Michael Wall  
**Harbour Master – Tasmania**