

Title: Traffic Timing Separation

Port: Port of Devonport

Duration: Until cancelled

Description:

Consecutive vessel movements within the Port of Devonport require an appropriate separation to reduce the risk of interaction or conflict between vessels. This Harbour Masters Instruction (HMI) defines the parameters when consecutive vessel movements are intended within the Port of Devonport.

Outbound vessel followed by and inbound vessel:

Where an inbound vessel is awaiting the departure of an outbound vessel from the Port of Devonport, the Exempt Master or Pilot of the inbound vessel must first advise **Devonport VTS** of entry into Port Waters. The inbound vessel must not proceed closer than 1.8nm from the Mersey River Fairway Beacon (refer to Diagram 1) until the outbound vessel has cleared the Fairway Beacon and **Devonport VTS has given clearance** for the inbound vessel to enter the Mersey River.

Two inbound vessels:

Where two vessels are inbound for the Port of Devonport, the second vessel must not proceed closer than 1.8nm (reference Diagram 1) from the Mersey River Fairway Beacon until the first vessel is all fast at her berth, and **Devonport VTS has given clearance** for the second inbound vessel to enter the Mersey River.

Two outbound vessels:

Where two vessels are outbound from the Port of Devonport, the second vessel is not to commence departure from the berth until the first vessel has cleared the Mersey River Fairway Beacon, and **Devonport VTS has given clearance** for the second vessel to depart.

Inbound vessel followed by an outbound vessel:

Where an outbound vessel is awaiting the arrival of an inbound vessel, the outbound is not to commence departure from the berth until the inbound vessel is all fast at her berth, and **Devonport VTS has given clearance** for the outbound vessel to depart.

Issued By	Harbour Master - Tasmania	Date of Issue	25/07/2022	Valid Until	Cancelled	Page 1 of 2
------------------	---------------------------	----------------------	------------	--------------------	-----------	--------------------

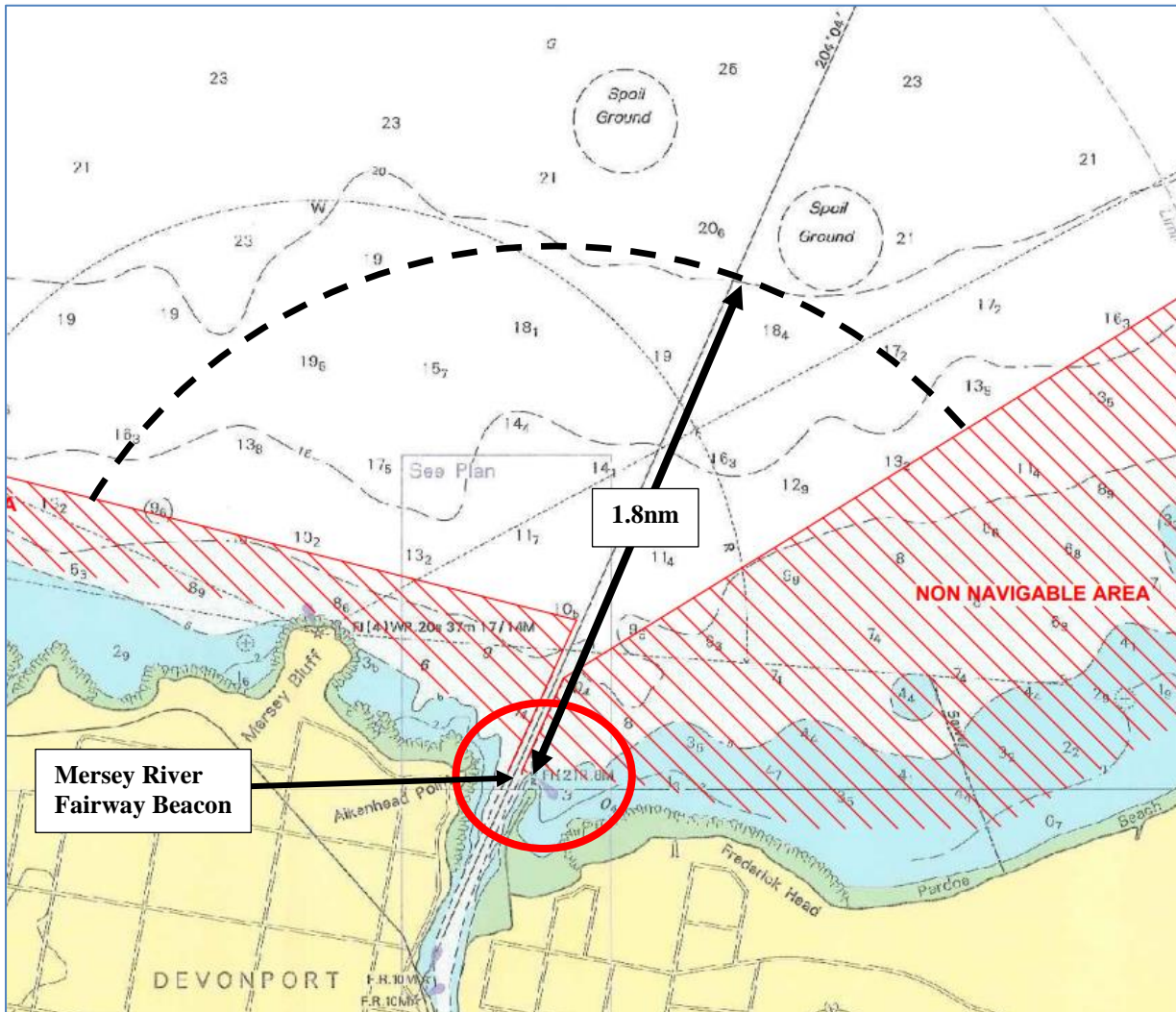


Diagram 1

I make this direction as an authorised person appointed by the Marine and Safety Authority (pursuant to an Instrument of Appointment dated 28 June 2012) under the *Marine and Safety Authority Act 1997*, section 44 for the purposes of the *Marine and Safety (Pilotage and Navigation) Regulations 2017*, Regulation 63(1).

If any person to whom this direction applies does not comply with this direction, that person may be subject to penalty in accordance with Regulation 63(3) of the *Marine and Safety (Pilotage and Navigation) Regulations 2017*.



Captain Wendy Doran
Harbour Master - Tasmania

Issued By	Harbour Master - Tasmania	Date of Issue	25/07/2022	Valid Until	Cancelled	Page 2 of 2
-----------	---------------------------	---------------	------------	-------------	-----------	-------------