

**Title:** **Macquarie Wharf 6 – Marine Sediment Sampling**  
**Works duration extended**

**Port:** **Port of Hobart**

**Description:** Works Commencing: **Tuesday 11<sup>th</sup> February 2025**  
 Works Completion: **Friday 21<sup>st</sup> February 2025**  
 Duration: 11 days

**Due to unfavourable weather conditions the works duration has been extended. HMI 25-09 is hereby cancelled and replaced by HMI 25-14.**

**Marine Solutions** will be undertaking sediment sampling at Macquarie Wharf No 6 from the vessel **SECOND SOLUTION**.

Contractors are to contact **HOBART VTS** on VHF ch 12:

- Prior to commencement of each days work, and
- On completion of each days work.

**HOBART VTS** are to advise of any expected vessel movements likely to affect marine sampling works.

Contractor works crew/s are to maintain a listening watch on VHF 12 at all times whilst working alongside the wharf.

No works are to be undertaken:

- Within the waterside restricted zone (WRZ) of a vessel alongside Macquarie 5 or Macquarie 6 , ie 50m from the applicable wharf;
- within 30 minutes of the intended movement of a vessel on an adjacent wharf;
- or as advised by TasPorts Operations, or Hobart VTS.

Mariners are advised to keep well clear, proceed at a slow speed (< 5 kts) when passing within 60m of a marine facility, and to minimise wash.

**In event of emergency, initial contacts:**

HOBART VTS	VHF channel 12	03 6380 3075
SECOND SOLUTION	VHF channel 12	
TasPorts Supervisor	Carl Lancaster	0419 100 622
Contractor Supervisor	Guy Williams	0409 216 192

<b>Issued By</b>	Harbour Master - Tasmania	<b>Date of Issue</b>	14/02/2025	<b>Valid Until</b>	22/02/2025	<b>Page 1 of 2</b>
------------------	---------------------------	----------------------	------------	--------------------	------------	--------------------

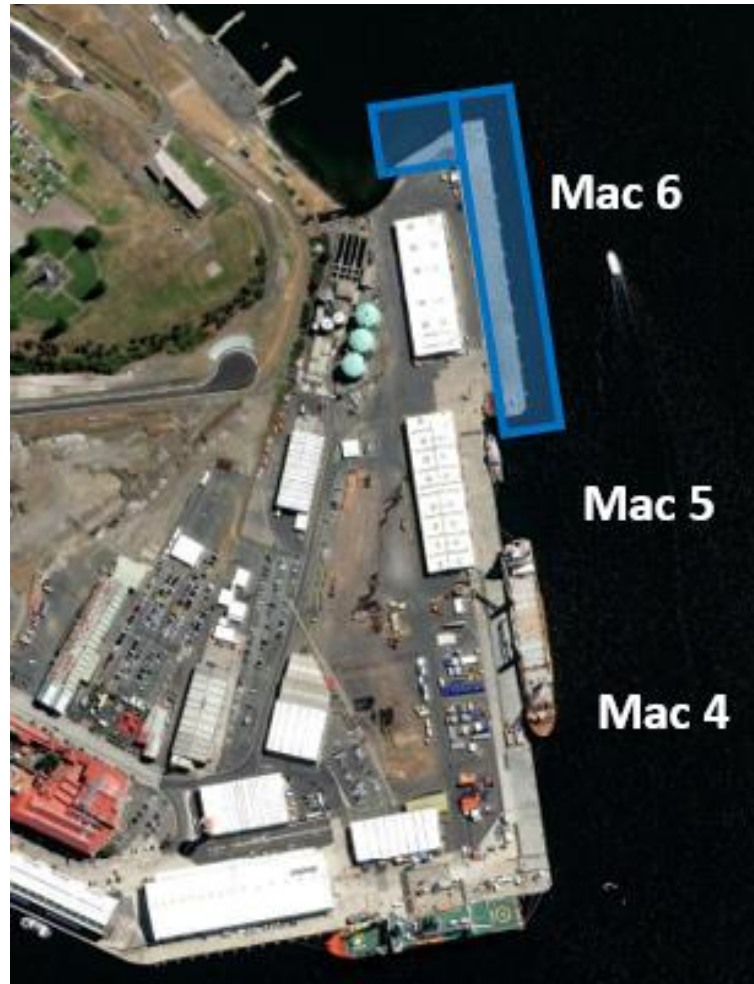


Figure 1 – Works Area

Captain A. Michael Wall  
**Harbour Master Tasmania**

<b>Issued By</b>	Harbour Master - Tasmania	<b>Date of Issue</b>	14/02/2025	<b>Valid Until</b>	22/02/2025	<b>Page 2 of 2</b>
------------------	---------------------------	----------------------	------------	--------------------	------------	--------------------