

**NOTES:**

This survey is in addition to the original detail survey provided by PDA Surveyors on drawing 44135-2A

Date of Survey: May 2022  
 Bearing Datum is GDA94 per GNSS.

Horizontal Coordinate Datum is planar based on MGA94 per coordinate origin SPM11461, with coordinates of E 446469.425 N 5440587.216 per the SurCoM.  
 To convert coordinates from planar to MGA94 scale coordinates from origin by the combined scale factor (csf=0.99963403).

Vertical datum is **Lowest Astronomical Tide (LAT)** per Australian Height Datum (AHD) conversion of SPM10381 & SmartNetAus solution with reputed AHD RL 15.269m.  
 To convert between AHD and LAT a factor of 1.97 must be applied, as published by the Department of Primary Industries Water & Environment. i.e. AHD 15.269 = LAT 17.239.

While reasonable effort has been made to locate all visible above ground services, there may be other services which were not located during survey. Only those features/points specifically requested by Nigel Eberhardt of TasPorts have been located and subsequently shown on this plan.

Underground services have been located by NME Services by non destructive means. No pot-holing or positive ID on services has been carried out. Unclassified pits will need verification. Prior to any demolition, excavation, final design or construction on this site, a comprehensive site investigation should be undertaken to locate all above and below ground service infrastructure. No under wharf services have been located as part of this survey. Only services within Tasports property boundary have been located at time of survey,

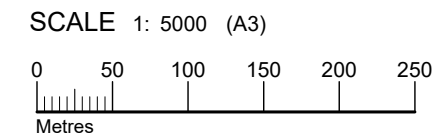
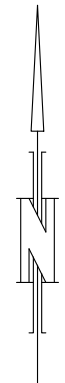
Feature symbols shown on these plans are approximate only. Where multiple symbols are shown together they indicate features close together in that location.

Various obstructions exist onsite, mostly freight, and as such some features in this data have been modeled.

Buildings have been located using GPS offsets so should be treated as indicative only.

**LEGEND:**

- EXISTING SEWER
- EXISTING STORMWATER
- EXISTING WATER
- EXISTING OVERHEAD ELECTRICAL
- EXISTING UNDERGROUND ELECTRICAL
- EXISTING UNDERGROUND TELECOMMUNICATIONS
- EXISTING FENCE
- STOP VALVE
- FIRE PLUG
- FIRE HYDRANT
- ELECTRICITY PIT/TURRET
- ELECTRICITY POLE
- REEFA
- LIGHT POLE
- TELSTRA PIT
- GRATED PIT
- STORMWATER MANHOLE
- SEWER MANHOLE
- UNCLASSIFIED PIT
- FUEL PUMP



REV	AMENDMENTS	DRAWN	DATE	APPR.
E				
D				
C	Amendments made per Tasports request	LH	09/02/2023	MF
B	Amendments made per Tasports request	LH	23/11/2022	MF
A	Contours removed, colour shown for electrical updated.	LH	26/05/2022	MF

NOTES:

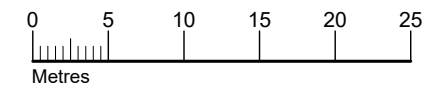
SURVEYOR	AE/MF/LH	GEOCID	47458
DRAWN	AE/LH	CHECKED	MF
DATE	11 May 2022		

**DETAIL SURVEY**  
 TT LINE, SEAROADS & TASPOTS  
 WRIGHT STREET, EAST DEVONPORT  
 FOR TASPOTS

77 Gunn Street  
 Devonport, Tasmania, 7310  
 PHONE: +61 03 6423 6875  
 EMAIL: pda.dpt@pda.com.au  
 www.pda.com.au  
 Also at: Burnie, Launceston,  
 Hobart & Kingston

SCALE	1: 5,000	PAPER	(A3)
SHEET	1	OF	20
JOB NUMBER	47458	DRAWING	5C

SCALE 1: 500 (A3)



REV	AMENDMENTS	DRAWN	DATE	APPR.
E				
D				
C	Amendments made per Tasports request	LH	09/02/2023	MF
B	Amendments made per Tasports request	LH	23/11/2022	MF
A	Contours removed, colour shown for electrical updated.	LH	26/05/2022	MF

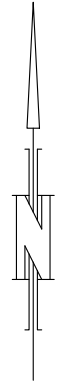
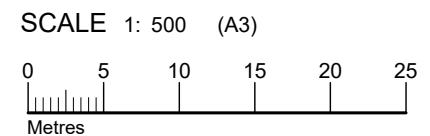
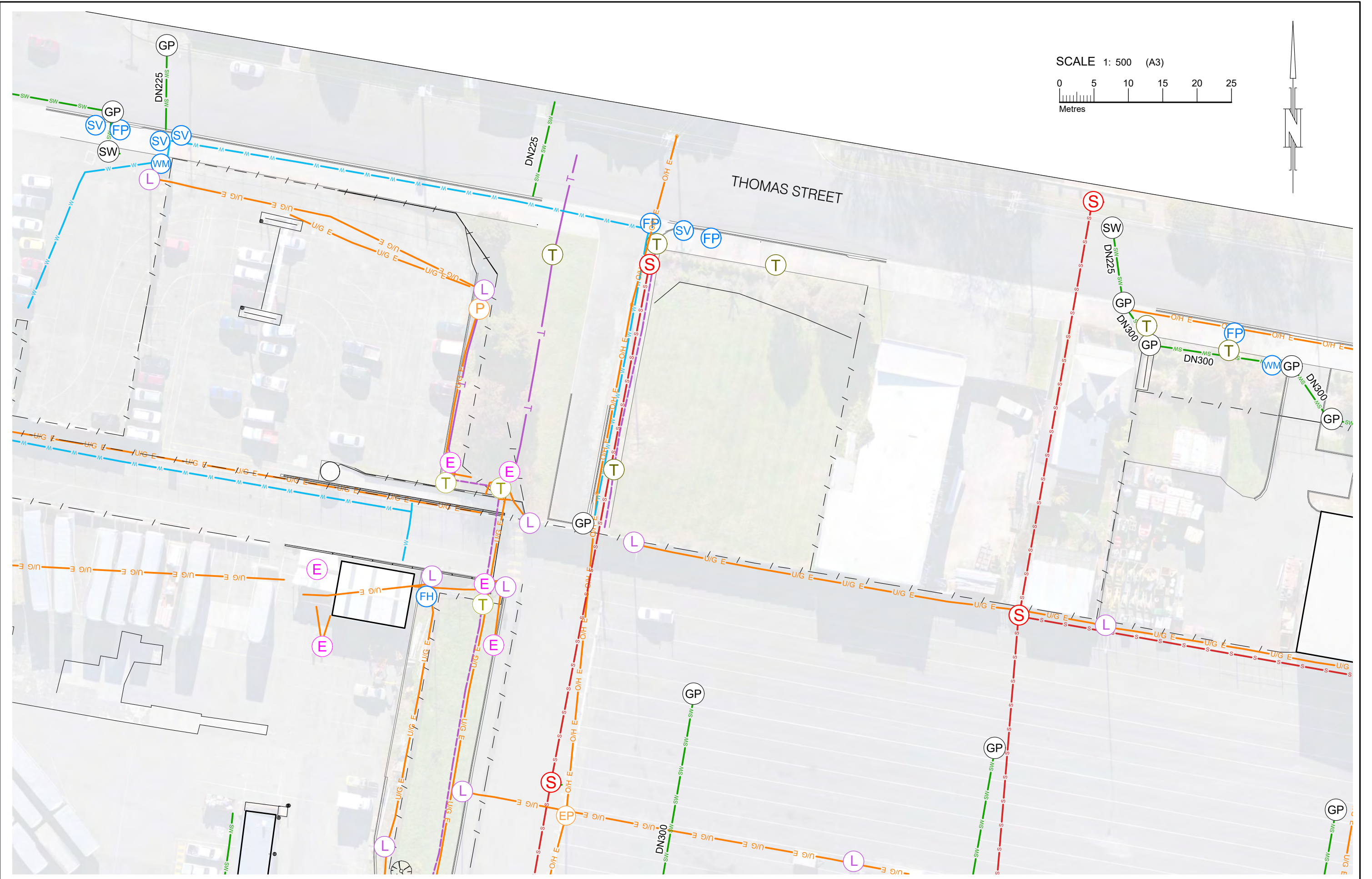
NOTES:  
SEE SHEET 1

SURVEYOR AE/MF/LH	GEOCIVIL 47458
DRAWN AE/LH	CHECKED MF
DATE 11May 2022	

**DETAIL SURVEY**  
**TT LINE, SEAROADS & TASPOTS**  
**WRIGHT STREET, EAST DEVONPORT**  
**FOR TASPOTS**

77 Gunn Street  
 Devonport, Tasmania, 7310  
 PHONE: +61 03 6423 6875  
 EMAIL: pda.dpt@pda.com.au  
 www.pda.com.au  
 Also at: Burnie, Launceston,  
 Hobart & Kingston

SCALE	PAPER
1: 500	(A3)
SHEET 2	OF 20
JOB NUMBER	DRAWING
47458	5C



E				
D				
C	Amendments made per Tasports request	LH	09/02/2023	MF
B	Amendments made per Tasports request	LH	23/11/2022	MF
A	Contours removed, colour shown for electrical updated.	LH	26/05/2022	MF
REV	AMENDMENTS	DRAWN	DATE	APPR.

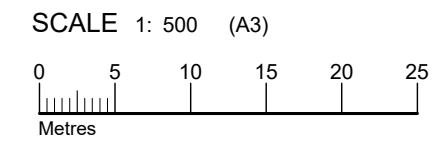
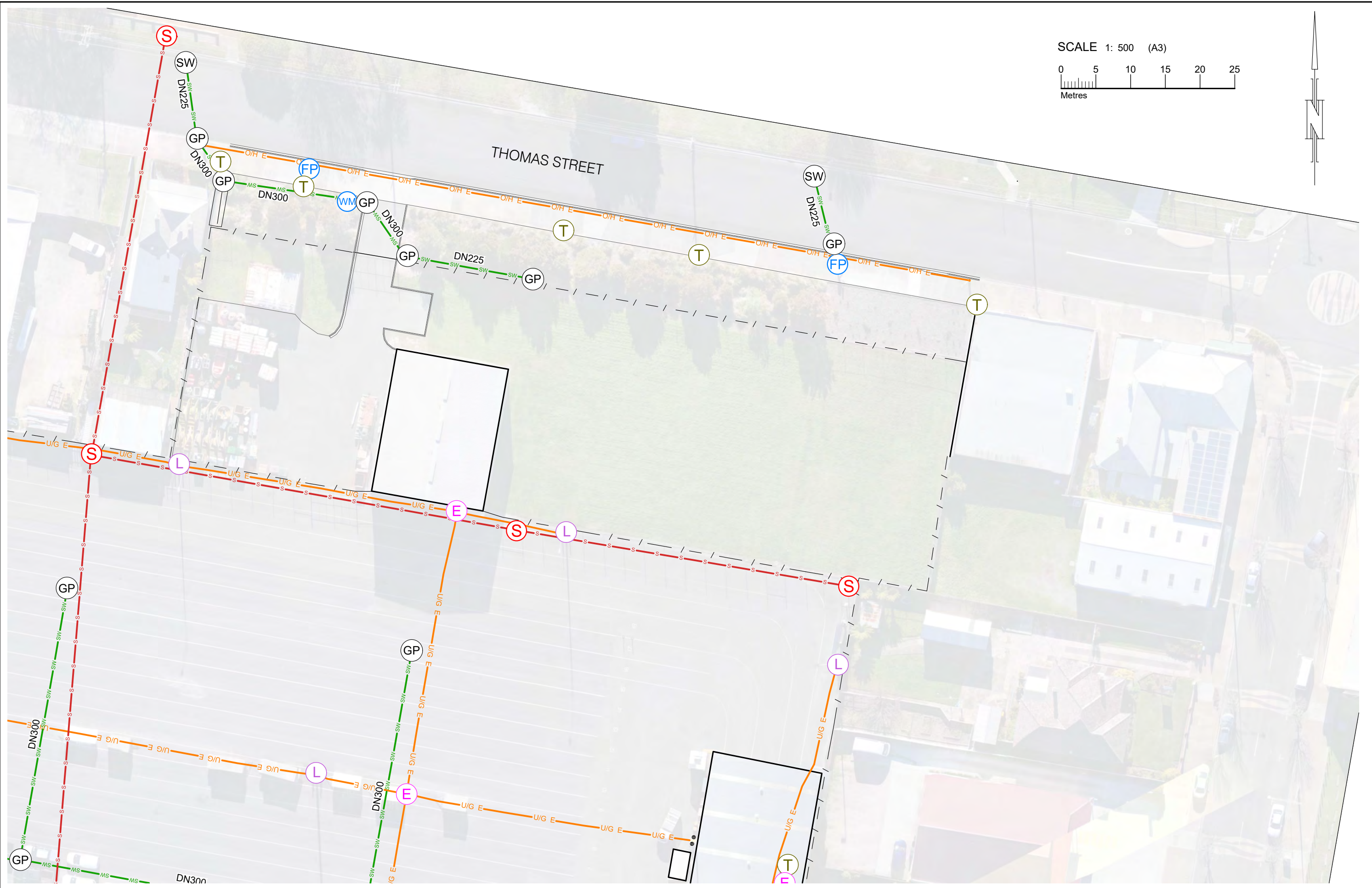
NOTES:  
SEE SHEET 1

SURVEYOR	AE/MF/LH	GEOCID	47458
DRAWN	AE/LH	CHECKED	MF
DATE	11 May 2022		

**DETAIL SURVEY**  
**TT LINE, SEAROADS & TASPOTS**  
**WRIGHT STREET, EAST DEVONPORT**  
**FOR TASPOTS**

77 Gunn Street  
 Devonport, Tasmania, 7310  
 PHONE: +61 03 6423 6875  
 EMAIL: pda.dpt@pda.com.au  
 www.pda.com.au  
 Also at: Burnie, Launceston,  
 Hobart & Kingston

SCALE	1: 500	PAPER	(A3)
SHEET	3	OF	20
JOB NUMBER	47458	DRAWING	5C



REV	AMENDMENTS	DRAWN	DATE	APPR.
E				
D				
C	Amendments made per Tasports request	LH	09/02/2023	MF
B	Amendments made per Tasports request	LH	23/11/2022	MF
A	Contours removed, colour shown for electrical updated.	LH	26/05/2022	MF

NOTES:  
SEE SHEET 1

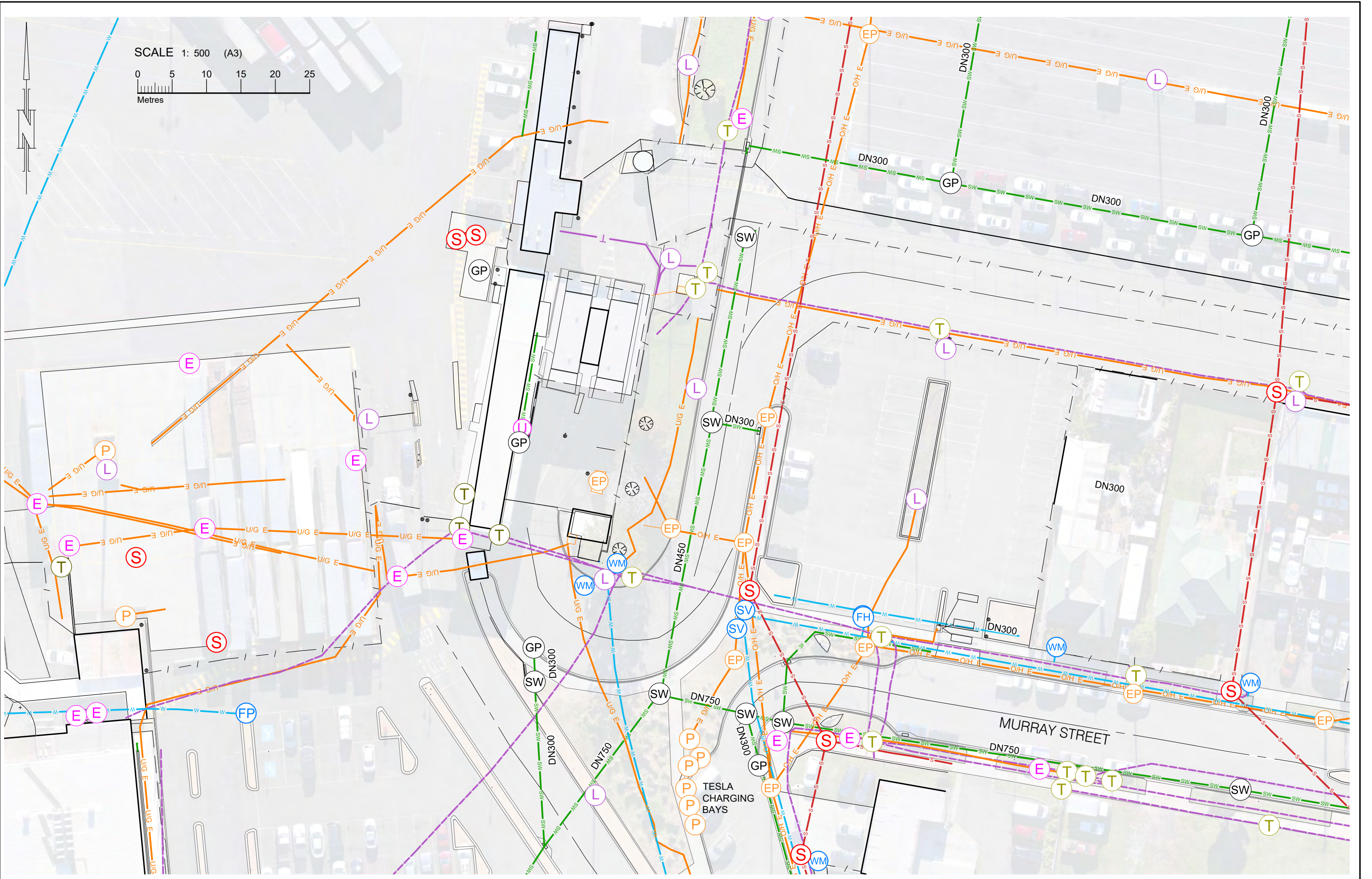
SURVEYOR	AE/MF/LH	GEOCIVIL	47458
DRAWN	AE/LH	CHECKED	MF
DATE	11 May 2022		

**DETAIL SURVEY**  
**TT LINE, SEAROADS & TASPOTS**  
**WRIGHT STREET, EAST DEVONPORT**  
**FOR TASPOTS**

77 Gunn Street  
 Devonport, Tasmania, 7310  
 PHONE: +61 03 6423 6875  
 EMAIL: pda.dpt@pda.com.au  
 www.pda.com.au  
 Also at: Burnie, Launceston,  
 Hobart & Kingston

SCALE	1: 500	PAPER	(A3)
SHEET	4	OF	20
JOB NUMBER	47458	DRAWING	5C





E				
D				
C	Amendments made per Tasports request	LH	09/02/2023	MF
B	Amendments made per Tasports request	LH	23/11/2022	MF
A	Contours removed, colour shown for electrical updated.	LH	26/05/2022	MF
REV	AMENDMENTS	DRAWN	DATE	APPR.

NOTES:  
SEE SHEET 1

SURVEYOR	AE/MF/LH	GEOCIVIL	47458
DRAWN	AE/LH	CHECKED	MF
DATE	11May 2022		

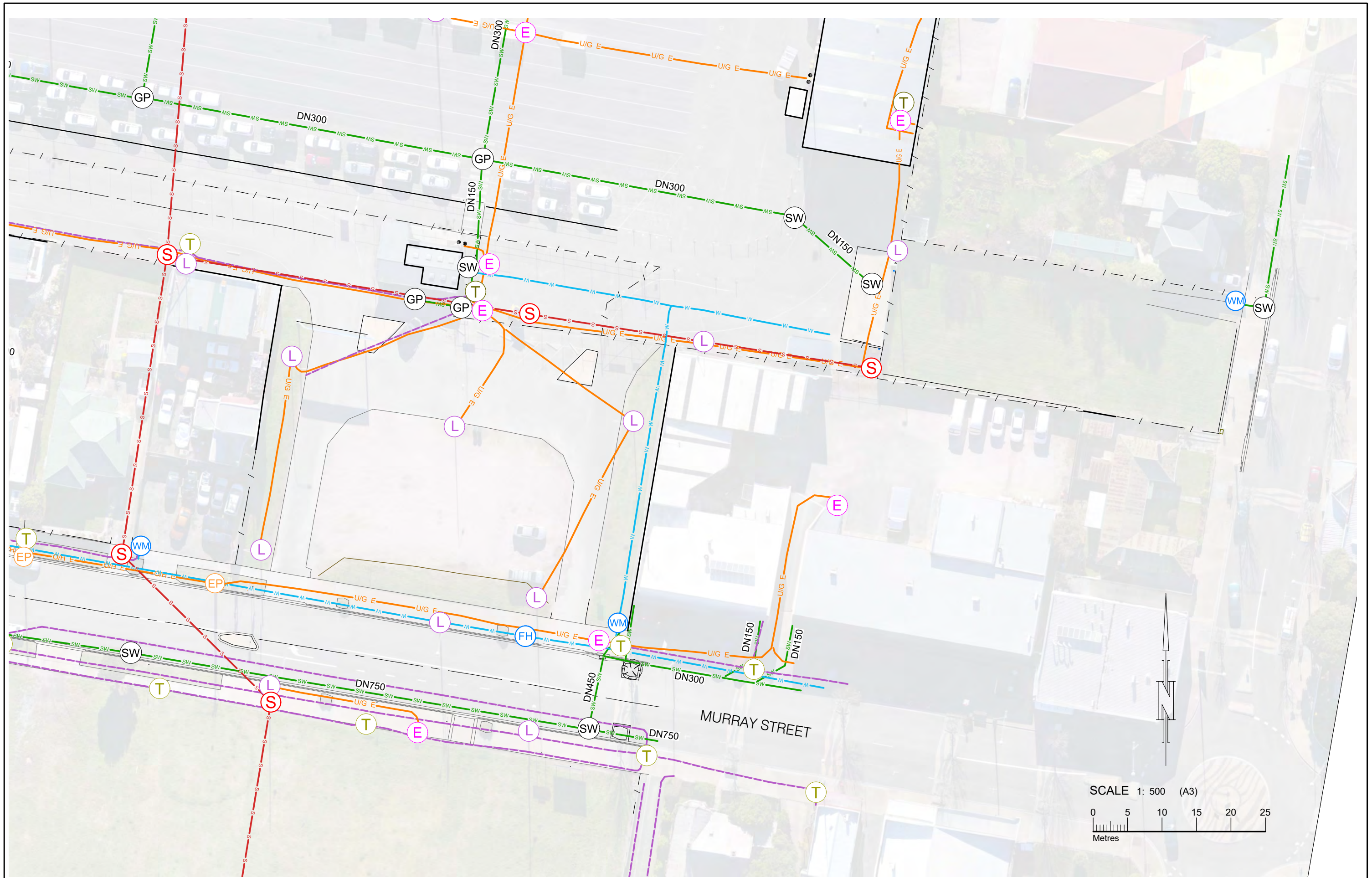
DETAIL SURVEY  
TT LINE, SEAROADS & TASPORTS  
WRIGHT STREET, EAST DEVONPORT  
FOR TASPORTS



**PDA**  
SURVEYORS, ENGINEERS & PLANNERS

77 Gunn Street  
Devonport, Tasmania, 7310  
PHONE: +61 03 6423 6875  
EMAIL: pda.dpt@pda.com.au  
www.pda.com.au  
Also at: Burnie, Launceston,  
Hobart & Kingston

SCALE	PAPER
1: 500	(A3)
SHEET 6	OF 20
JOB NUMBER	DRAWING
47458	5C



REV	AMENDMENTS	DRAWN	DATE	APPR.
E				
D				
C	Amendments made per Tasports request	LH	09/02/2023	MF
B	Amendments made per Tasports request	LH	23/11/2022	MF
A	Contours removed, colour shown for electrical updated.	LH	26/05/2022	MF

NOTES:  
SEE SHEET 1

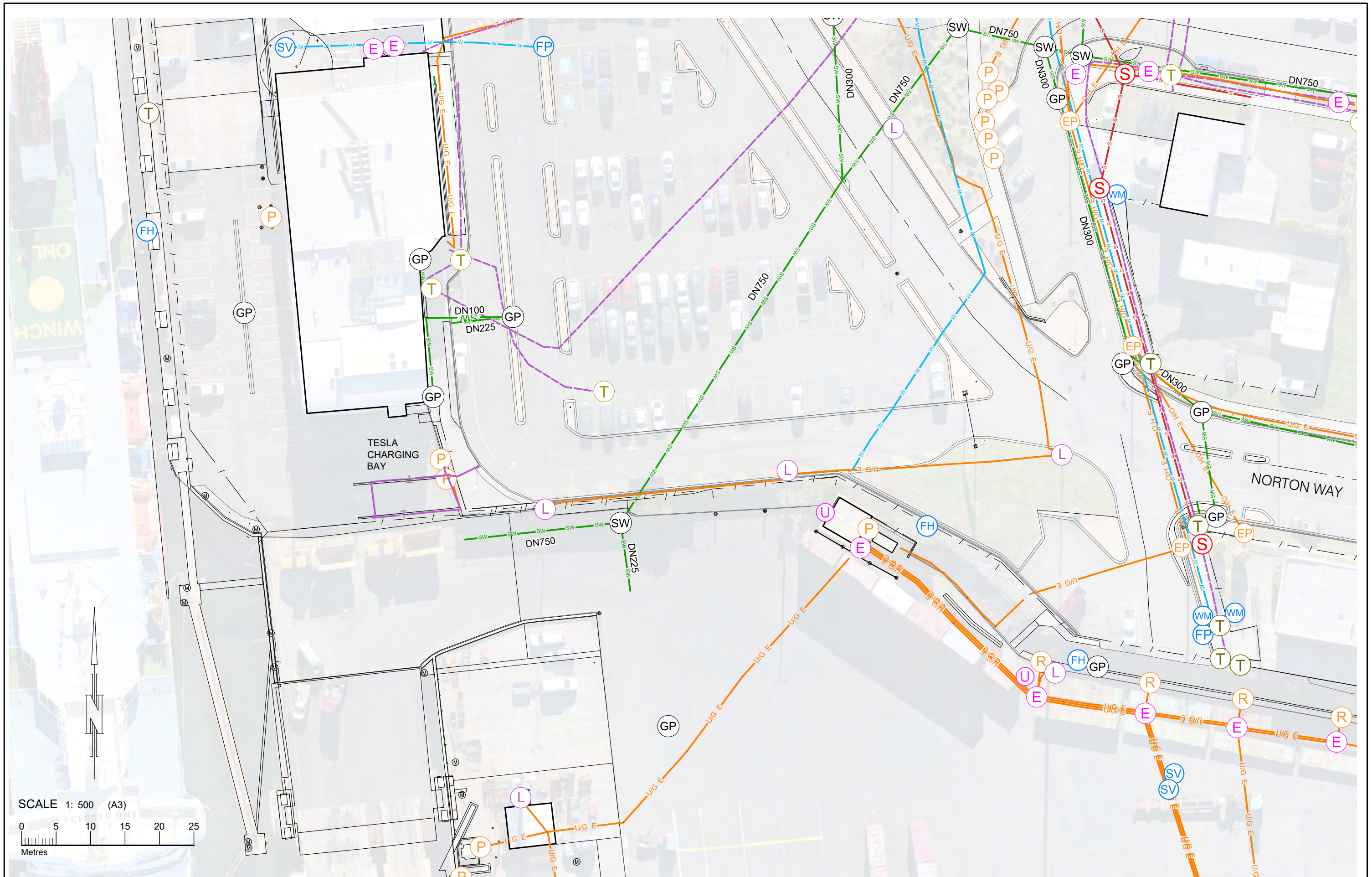
SURVEYOR	AE/MF/LH	GEOCIVIL	47458
DRAWN	AE/LH	CHECKED	MF
DATE	11May 2022		

**DETAIL SURVEY**  
**TT LINE, SEAROADS & TASPOTS**  
**WRIGHT STREET, EAST DEVONPORT**  
**FOR TASPOTS**

**PDA**  
 SURVEYORS, ENGINEERS & PLANNERS

77 Gunn Street  
 Devonport, Tasmania, 7310  
 PHONE: +61 03 6423 6875  
 EMAIL: pda.dpt@pda.com.au  
 www.pda.com.au  
 Also at: Burnie, Launceston,  
 Hobart & Kingston

SCALE	PAPER
1: 500	(A3)
SHEET 7	OF 20
JOB NUMBER	DRAWING
47458	-5C



E				
D				
C	Amendments made per Tasports request	LH	09/02/2023	MF
B	Amendments made per Tasports request	LH	23/11/2022	MF
A	Contours removed, colour shown for electrical updated.	LH	26/05/2022	MF
REV	AMENDMENTS	DRAWN	DATE	APPR.

NOTES:  
SEE SHEET 1

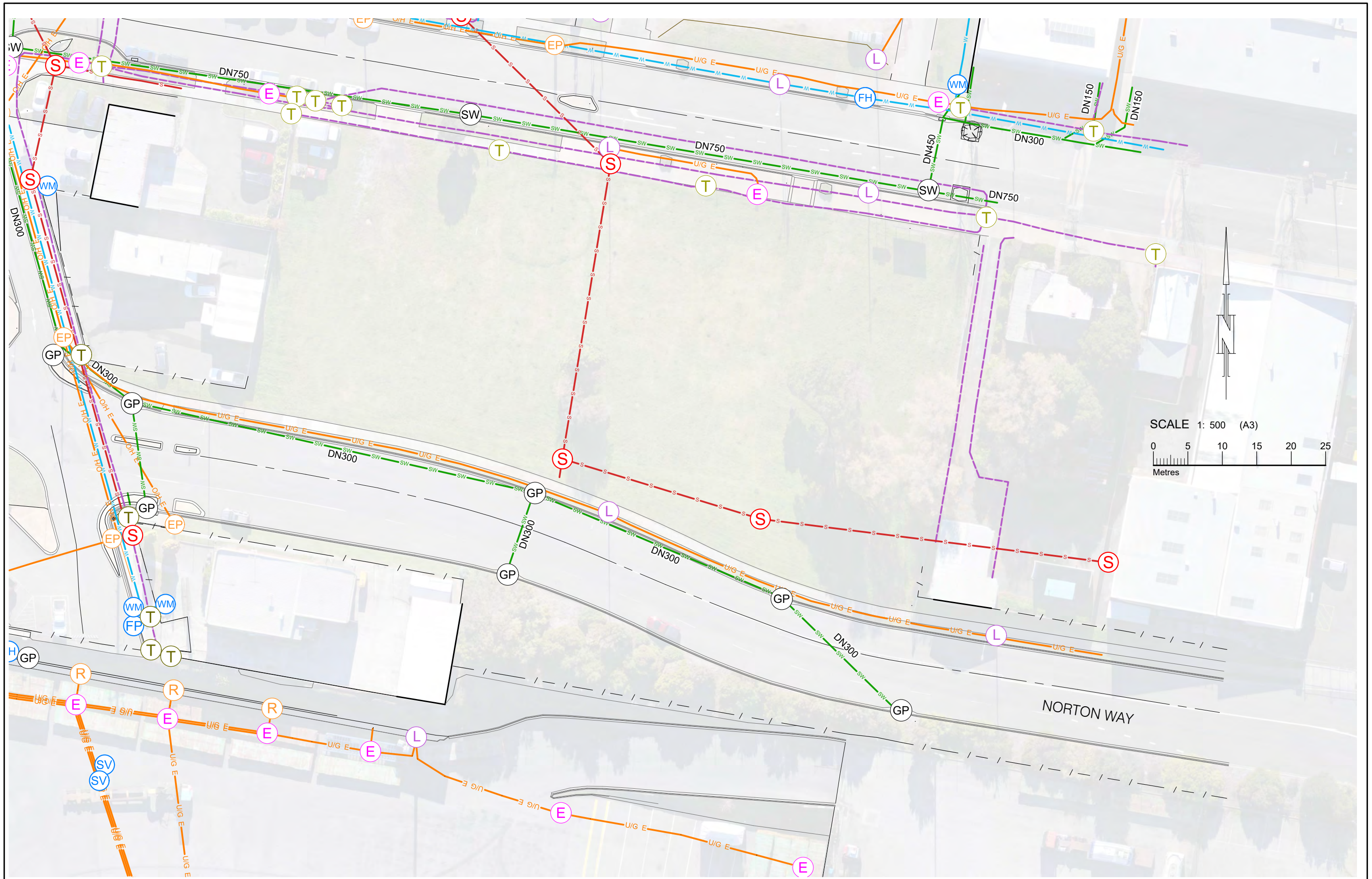
SURVEYOR	AE/MF/LH	GEOCIVIL	47458
DRAWN	AE/LH	CHECKED	MF
DATE	11May 2022		

**DETAIL SURVEY**  
**TT LINE, SEAROADS & TASPOTS**  
**WRIGHT STREET, EAST DEVONPORT**  
**FOR TASPOTS**

77 Gunn Street  
 Devonport, Tasmania, 7310  
 PHONE: +61 03 6423 6875  
 EMAIL: pda.dpt@pda.com.au  
 www.pda.com.au  
 Also at: Burnie, Launceston,  
 Hobart & Kingston

SCALE	PAPER
1: 500	(A3)
SHEET 8	OF 20
JOB NUMBER	DRAWING
47458	5C





SCALE 1: 500 (A3)  
 0 5 10 15 20 25  
 Metres

REV	AMENDMENTS	DRAWN	DATE	APPR.
E				
D				
C	Amendments made per Tasports request	LH	09/02/2023	MF
B	Amendments made per Tasports request	LH	23/11/2022	MF
A	Contours removed, colour shown for electrical updated.	LH	26/05/2022	MF

NOTES:  
 SEE SHEET 1

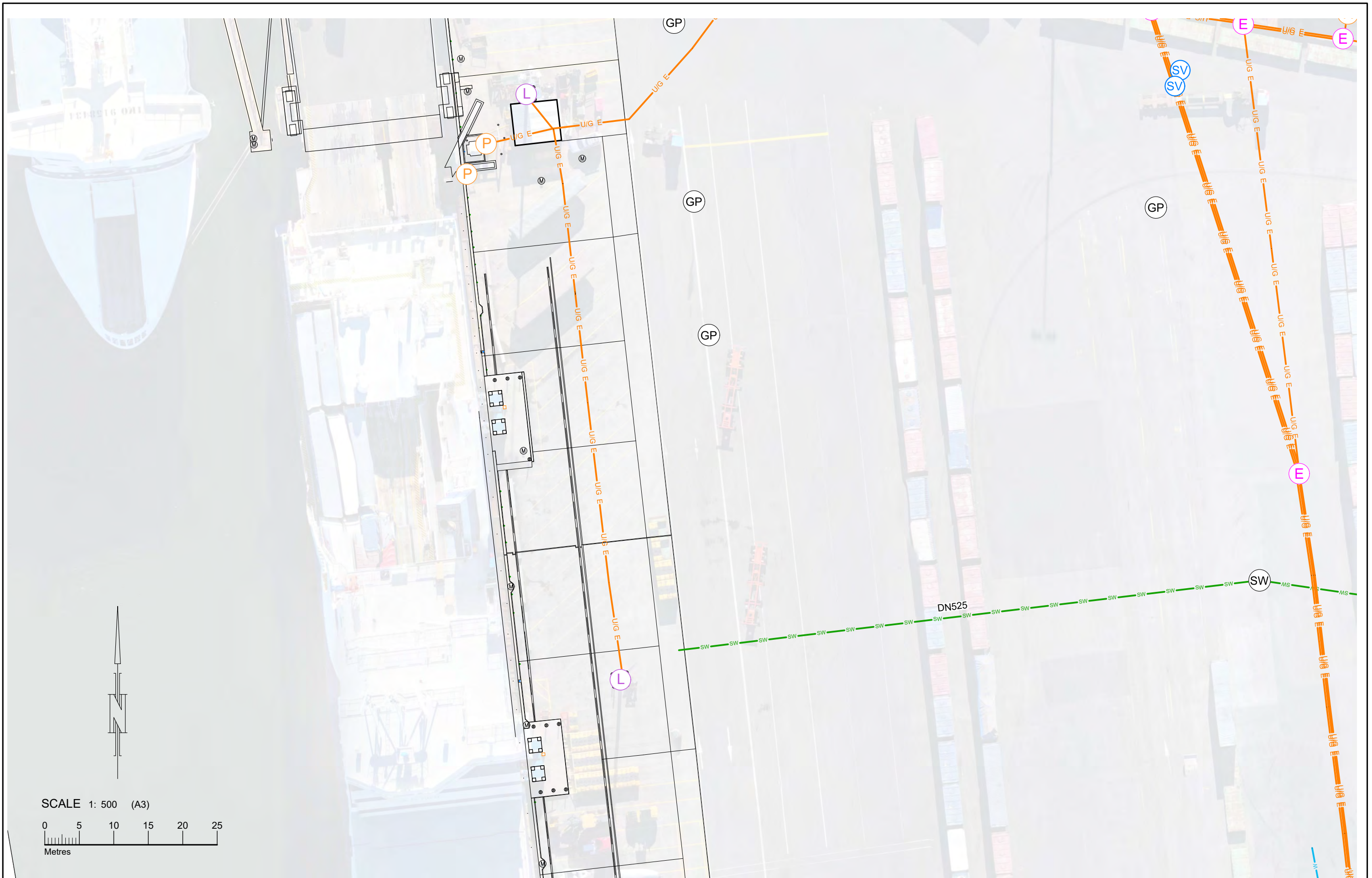
SURVEYOR AE/MF/LH	GEOCID 47458
DRAWN AE/LH	CHECKED MF
DATE 11May 2022	

**DETAIL SURVEY**  
**TT LINE, SEAROADS & TASPOTS**  
**WRIGHT STREET, EAST DEVONPORT**  
**FOR TASPOTS**

**PDA**  
 SURVEYORS, ENGINEERS & PLANNERS

77 Gunn Street  
 Devonport, Tasmania, 7310  
 PHONE: +61 03 6423 6875  
 EMAIL: pda.dpt@pda.com.au  
 www.pda.com.au  
 Also at: Burnie, Launceston,  
 Hobart & Kingston

SCALE	PAPER
1: 500	(A3)
SHEET 9	OF 20
JOB NUMBER	DRAWING
47458	-5C



E				
D				
C	Amendments made per Tasports request	LH	09/02/2023	MF
B	Amendments made per Tasports request	LH	23/11/2022	MF
A	Contours removed, colour shown for electrical updated.	LH	26/05/2022	MF
REV	AMENDMENTS	DRAWN	DATE	APPR.

NOTES:  
SEE SHEET 1

SURVEYOR	AE/MF/LH	GEOCIVIL	47458
DRAWN	AE/LH	CHECKED	MF
DATE	11May 2022		

**DETAIL SURVEY  
TT LINE, SEAROADS & TASPOTS  
WRIGHT STREET, EAST DEVONPORT  
FOR TASPOTS**



77 Gunn Street  
Devonport, Tasmania, 7310  
PHONE: +61 03 6423 6875  
EMAIL: pda.dpt@pda.com.au  
www.pda.com.au  
Also at: Burnie, Launceston,  
Hobart & Kingston

SCALE	1: 500	PAPER	(A3)
SHEET	10	OF	20
JOB NUMBER	47458	DRAWING	5C



E				
D				
C	Amendments made per Tasports request	LH	09/02/2023	MF
B	Amendments made per Tasports request	LH	23/11/2022	MF
A	Contours removed, colour shown for electrical updated.	LH	26/05/2022	MF
REV	AMENDMENTS	DRAWN	DATE	APPR.

NOTES:  
SEE SHEET 1

SURVEYOR	AE/MF/LH	GEOCIVIL	47458
DRAWN	AE/LH	CHECKED	MF
DATE	11May 2022		

**DETAIL SURVEY**  
**TT LINE, SEAROADS & TASPOTS**  
**WRIGHT STREET, EAST DEVONPORT**  
**FOR TASPOTS**



77 Gunn Street  
 Devonport, Tasmania, 7310  
 PHONE: +61 03 6423 6875  
 EMAIL: pda.dpt@pda.com.au  
 www.pda.com.au  
 Also at: Burnie, Launceston,  
 Hobart & Kingston

SCALE	PAPER
1: 500	(A3)
SHEET 11	OF 20
JOB NUMBER	DRAWING
47458	5C



SCALE 1: 500 (A3)  
 0 5 10 15 20 25  
 Metres

E			
D			
C	Amendments made per Tasports request	LH	09/02/2023 MF
B	Amendments made per Tasports request	LH	23/11/2022 MF
A	Contours removed, colour shown for electrical updated.	LH	26/05/2022 MF
REV	AMENDMENTS	DRAWN	DATE APPR.

NOTES:  
 SEE SHEET 1

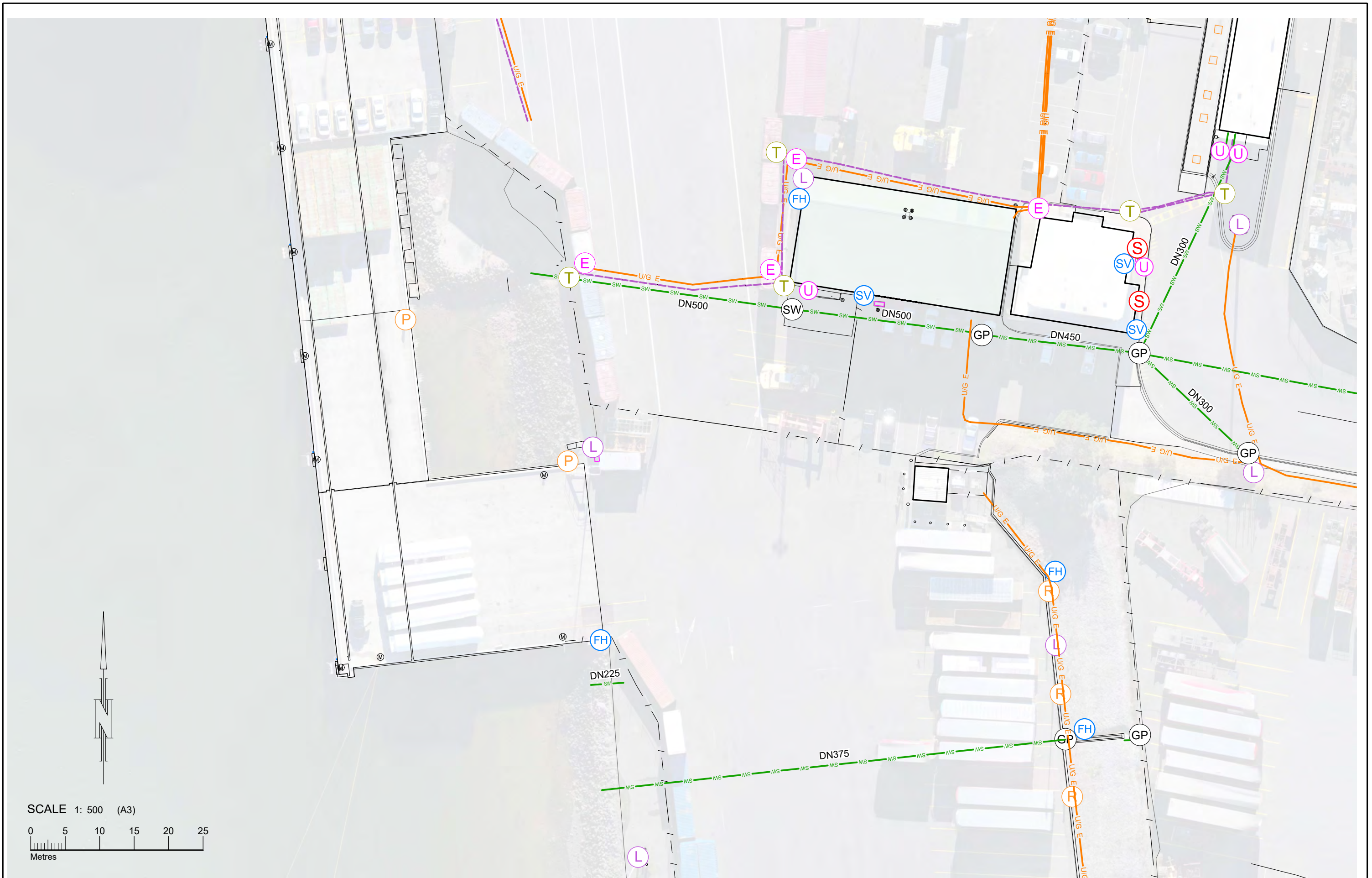
SURVEYOR	AE/MF/LH	GEOCIVIL	47458
DRAWN	AE/LH	CHECKED	MF
DATE	11May 2022		

**DETAIL SURVEY  
 TT LINE, SEAROADS & TASPOTS  
 WRIGHT STREET, EAST DEVONPORT  
 FOR TASPOTS**

**PDA**  
 SURVEYORS, ENGINEERS & PLANNERS

77 Gunn Street  
 Devonport, Tasmania, 7310  
 PHONE: +61 03 6423 6875  
 EMAIL: pda.dpt@pda.com.au  
 www.pda.com.au  
 Also at: Burnie, Launceston,  
 Hobart & Kingston

SCALE	1: 500	PAPER	(A3)
SHEET	12	OF	20
JOB NUMBER	47458	DRAWING	5C



E				
D				
C	Amendments made per Tasports request	LH	09/02/2023	MF
B	Amendments made per Tasports request	LH	23/11/2022	MF
A	Contours removed, colour shown for electrical updated.	LH	26/05/2022	MF
REV	AMENDMENTS	DRAWN	DATE	APPR.

NOTES:  
SEE SHEET 1

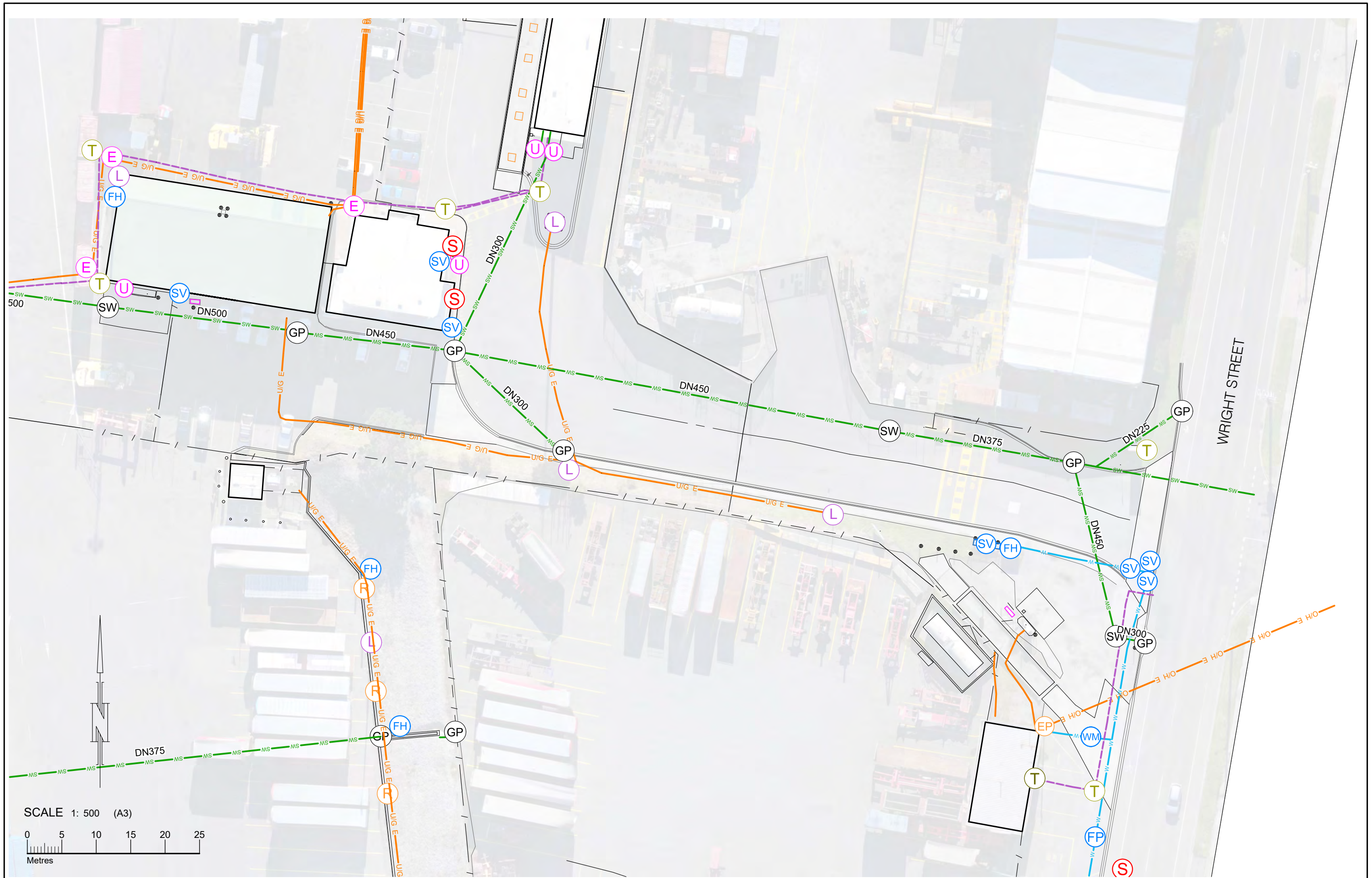
SURVEYOR	AE/MF/LH	GEOCIVIL	47458
DRAWN	AE/LH	CHECKED	MF
DATE	11May 2022		

**DETAIL SURVEY**  
**TT LINE, SEAROADS & TASPOTS**  
**WRIGHT STREET, EAST DEVONPORT**  
**FOR TASPOTS**



77 Gunn Street  
 Devonport, Tasmania, 7310  
 PHONE: +61 03 6423 6875  
 EMAIL: pda.dpt@pda.com.au  
 www.pda.com.au  
 Also at: Burnie, Launceston,  
 Hobart & Kingston

SCALE	PAPER
1: 500	(A3)
SHEET 13 OF 20	
JOB NUMBER	DRAWING
47458	5C



E				
D				
C	Amendments made per Tasports request	LH	09/02/2023	MF
B	Amendments made per Tasports request	LH	23/11/2022	MF
A	Contours removed, colour shown for electrical updated.	LH	26/05/2022	MF
REV	AMENDMENTS	DRAWN	DATE	APPR.

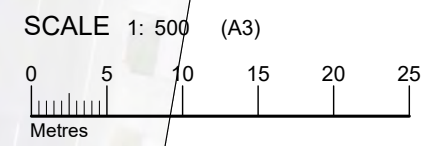
NOTES:  
SEE SHEET 1

SURVEYOR	AE/MF/LH	GEOCIVIL	47458
DRAWN	AE/LH	CHECKED	MF
DATE	11May 2022		

**DETAIL SURVEY**  
**TT LINE, SEAROADS & TASPOTS**  
**WRIGHT STREET, EAST DEVONPORT**  
**FOR TASPOTS**

77 Gunn Street  
 Devonport, Tasmania, 7310  
 PHONE: +61 03 6423 6875  
 EMAIL: pda.dpt@pda.com.au  
 www.pda.com.au  
 Also at: Burnie, Launceston,  
 Hobart & Kingston

SCALE	PAPER
1: 500	(A3)
SHEET 14	OF 20
JOB NUMBER	DRAWING
47458	5C



E				
D				
C	Amendments made per Tasports request	LH	09/02/2023	MF
B	Amendments made per Tasports request	LH	23/11/2022	MF
A	Contours removed, colour shown for electrical updated.	LH	26/05/2022	MF
REV	AMENDMENTS	DRAWN	DATE	APPR.

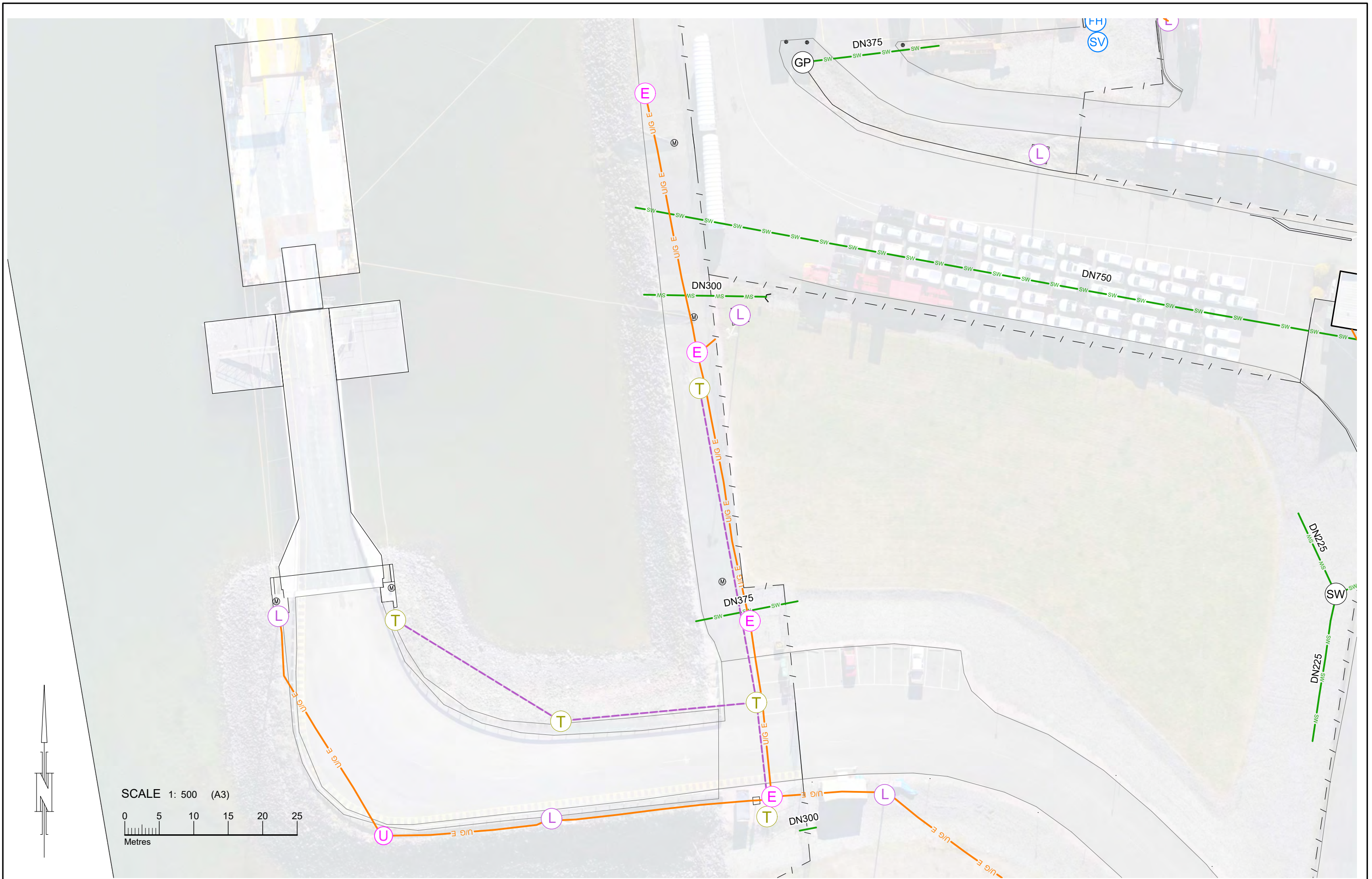
NOTES:  
SEE SHEET 1

SURVEYOR	AE/MF/LH	GEOCIVIL	47458
DRAWN	AE/LH	CHECKED	MF
DATE	11May 2022		

**DETAIL SURVEY**  
**TT LINE, SEAROADS & TASPOTS**  
**WRIGHT STREET, EAST DEVONPORT**  
**FOR TASPOTS**

77 Gunn Street  
 Devonport, Tasmania, 7310  
 PHONE: +61 03 6423 6875  
 EMAIL: pda.dpt@pda.com.au  
 www.pda.com.au  
 Also at: Burnie, Launceston,  
 Hobart & Kingston

SCALE	1: 500	PAPER	(A3)
SHEET	15	OF	20
JOB NUMBER	47458	DRAWING	5C



E				
D				
C	Amendments made per Tasports request	LH	09/02/2023	MF
B	Amendments made per Tasports request	LH	23/11/2022	MF
A	Contours removed, colour shown for electrical updated.	LH	26/05/2022	MF
REV	AMENDMENTS	DRAWN	DATE	APPR.

NOTES:  
SEE SHEET 1

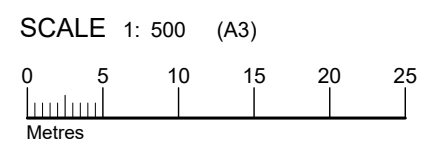
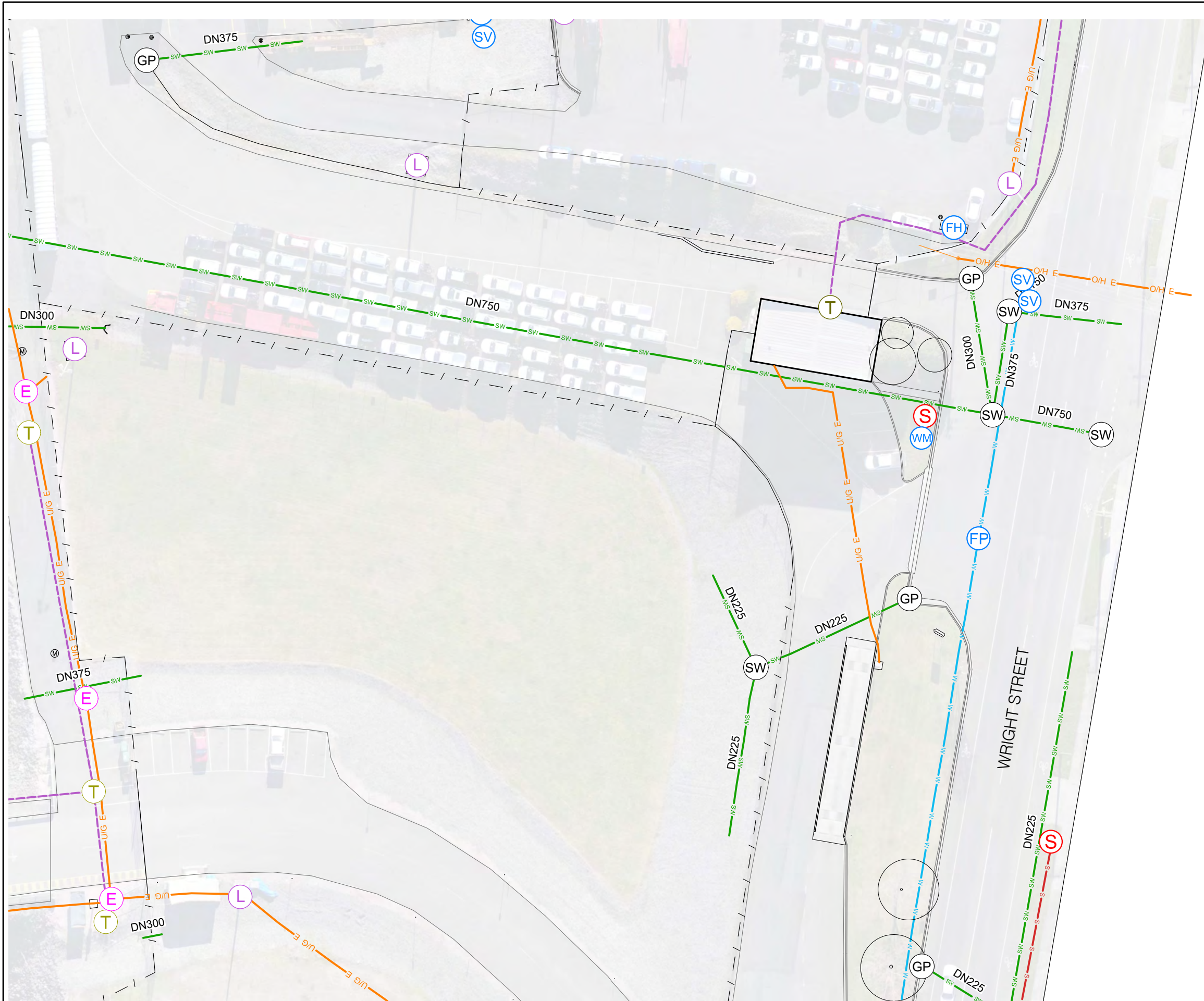
SURVEYOR	AE/MF/LH	GEOCIVIL	47458
DRAWN	AE/LH	CHECKED	MF
DATE	11May 2022		

**DETAIL SURVEY  
TT LINE, SEAROADS & TASPOTS  
WRIGHT STREET, EAST DEVONPORT  
FOR TASPOTS**

77 Gunn Street  
Devonport, Tasmania, 7310  
PHONE: +61 03 6423 6875  
EMAIL: pda.dpt@pda.com.au  
www.pda.com.au  
Also at: Burnie, Launceston,  
Hobart & Kingston

SCALE	1: 500	PAPER	(A3)
SHEET	16	OF	20
JOB NUMBER	47458	DRAWING	5C





E				
D				
C	Amendments made per Tasports request	LH	09/02/2023	MF
B	Amendments made per Tasports request	LH	23/11/2022	MF
A	Contours removed, colour shown for electrical updated.	LH	26/05/2022	MF
REV	AMENDMENTS	DRAWN	DATE	APPR.

NOTES:  
SEE SHEET 1

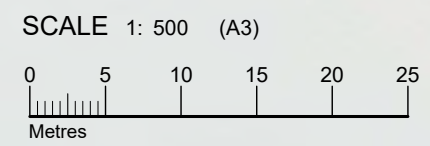
SURVEYOR	AE/MF/LH	GEOCIVIL	47458
DRAWN	AE/LH	CHECKED	MF
DATE	11May 2022		

**DETAIL SURVEY**  
**TT LINE, SEAROADS & TASPOTS**  
**WRIGHT STREET, EAST DEVONPORT**  
**FOR TASPOTS**



77 Gunn Street  
 Devonport, Tasmania, 7310  
 PHONE: +61 03 6423 6875  
 EMAIL: pda.dpt@pda.com.au  
 www.pda.com.au  
 Also at: Burnie, Launceston,  
 Hobart & Kingston

SCALE	1: 500	PAPER	(A3)
SHEET	17	OF	20
JOB NUMBER	47458	DRAWING	5C



REV	AMENDMENTS	DRAWN	DATE	APPR.
E				
D				
C	Amendments made per Tasports request	LH	09/02/2023	MF
B	Amendments made per Tasports request	LH	23/11/2022	MF
A	Contours removed, colour shown for electrical updated.	LH	26/05/2022	MF

NOTES:

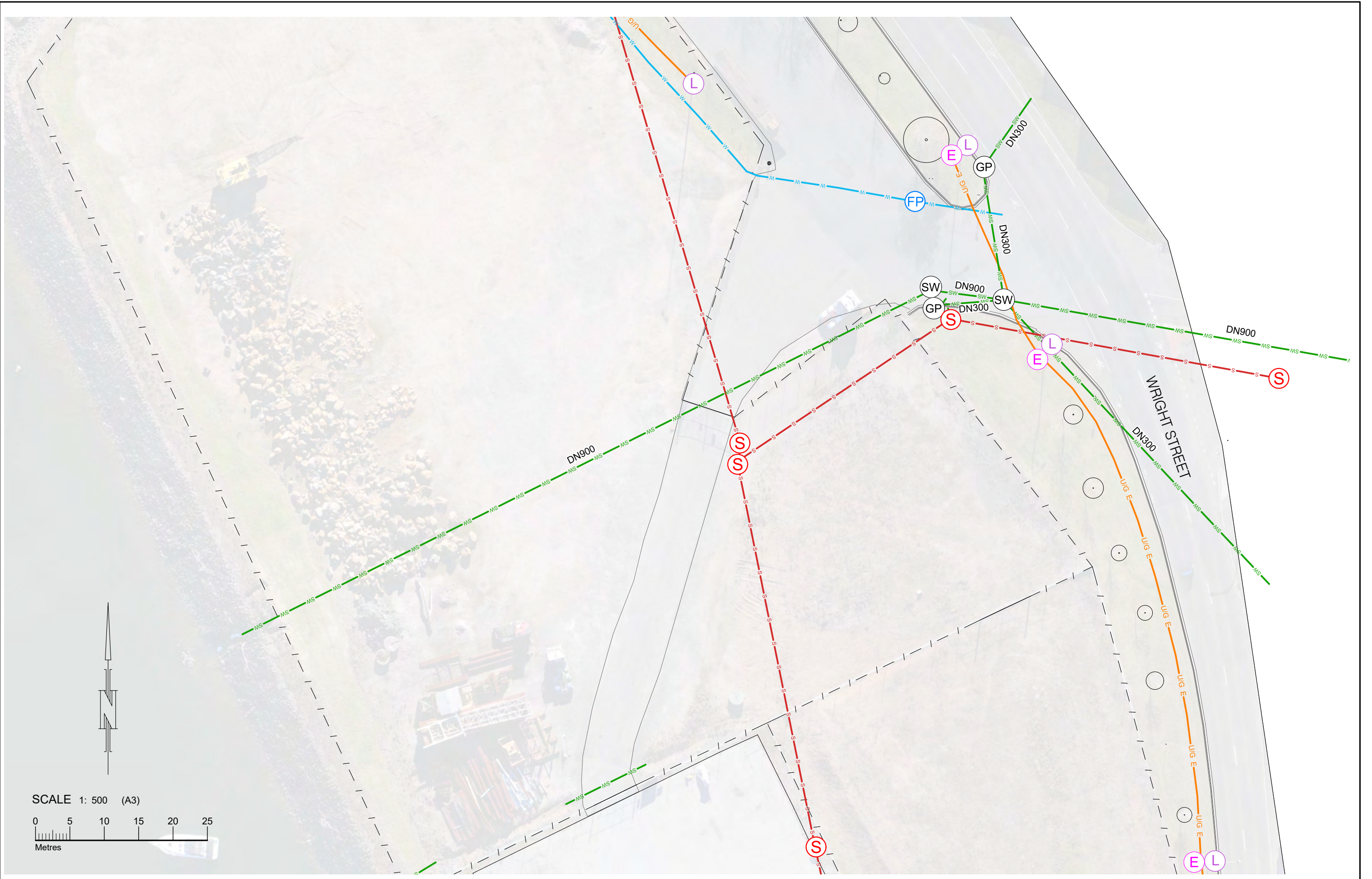
SEE SHEET 1

SURVEYOR	AE/MF/LH	GEOCIVIL	47458
DRAWN	AE/LH	CHECKED	MF
DATE	11May 2022		

**DETAIL SURVEY**  
**TT LINE, SEAROADS & TASPOTS**  
**WRIGHT STREET, EAST DEVONPORT**  
**FOR TASPOTS**

77 Gunn Street  
 Devonport, Tasmania, 7310  
 PHONE: +61 03 6423 6875  
 EMAIL: pda.dpt@pda.com.au  
 www.pda.com.au  
 Also at: Burnie, Launceston,  
 Hobart & Kingston

SCALE	PAPER
1: 500	(A3)
SHEET 18 OF 20	
JOB NUMBER	DRAWING
47458	5C



E				
D				
C	Amendments made per Tasports request	LH	09/02/2023	MF
B	Amendments made per Tasports request	LH	23/11/2022	MF
A	Contours removed, colour shown for electrical updated.	LH	26/05/2022	MF
REV	AMENDMENTS	DRAWN	DATE	APPR.

NOTES:  
SEE SHEET 1

SURVEYOR	AE/MF/LH	GEOCIVIL	47458
DRAWN	AE/LH	CHECKED	MF
DATE	11May 2022		

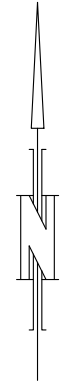
**DETAIL SURVEY  
TT LINE, SEAROADS & TASPOTS  
WRIGHT STREET, EAST DEVONPORT  
FOR TASPOTS**

77 Gunn Street  
Devonport, Tasmania, 7310  
PHONE: +61 03 6423 6875  
EMAIL: pda.dpt@pda.com.au  
www.pda.com.au  
Also at: Burnie, Launceston,  
Hobart & Kingston

SCALE	PAPER
1: 500	(A3)
SHEET 19 OF 20	
JOB NUMBER	DRAWING
47458	5C



SCALE 1: 500 (A3)  
 0 5 10 15 20 25  
 Metres



E				
D				
C	Amendments made per Tasports request	LH	09/02/2023	MF
B	Amendments made per Tasports request	LH	23/11/2022	MF
A	Contours removed, colour shown for electrical updated.	LH	26/05/2022	MF
REV	AMENDMENTS	DRAWN	DATE	APPR.

NOTES:  
 SEE SHEET 1

SURVEYOR	AE/MF/LH	GEOCIVIL	47458
DRAWN	AE/LH	CHECKED	MF
DATE	11May 2022		

**DETAIL SURVEY**  
**TT LINE, SEAROADS & TASPOTS**  
**WRIGHT STREET, EAST DEVONPORT**  
**FOR TASPOTS**

**PDA**  
 SURVEYORS, ENGINEERS & PLANNERS

77 Gunn Street  
 Devonport, Tasmania, 7310  
 PHONE: +61 03 6423 6875  
 EMAIL: pda.dpt@pda.com.au  
 www.pda.com.au  
 Also at: Burnie, Launceston,  
 Hobart & Kingston

SCALE	1: 500	PAPER	(A3)
SHEET	20	OF	20
JOB NUMBER	47458	DRAWING	5C