

# SCHEDULE OF PORT CHARGES

EFFECTIVE FROM 1 JULY 2026



# GENERAL CONDITIONS

**This Schedule of Port Charges sets out fees for some of the services provided by TasPorts and is effective from 1 July 2026.**

The Schedule of Port Charges applies to standard services offered by the Tasmanian Ports Corporation Pty Ltd (TasPorts) at its ports, in the absence of any other applicable agreement with TasPorts. Fees for non-standard services will be applied in accordance with any Port Services Agreement in place with the relevant customer. If a Port User's access request involves new capital investment, then the price information in the Schedule of Port Charges document may require adjustment.

TasPorts may issue a revised Schedule of Port Charges at any time, but any revised Schedule of Port Charges will not apply retrospectively and will only apply from the date specified in the revision which will be after the date of publication of any revised Schedule of Port Charges on TasPorts' website.

If the nature or costs of providing a service change due to a new requirement of MAST or the Harbour Master, or other legal or regulatory requirement, TasPorts will use its best endeavours to give reasonable notice of the revised Schedule of Port Charges.

In other cases, the following notice periods will apply:

- For revisions of pricing taking effect on 1 July of any year, TasPorts will endeavour to publish the revised schedule by 31 May in that year.
- Revisions of pricing within a financial year will be advised to Port Users 60 days before the date of effect and published with at least 30 days' notice of effect.

In the absence of any other applicable agreement with TasPorts, all services provided by TasPorts including, but not limited to, the services referred to in this Schedule are provided subject to the *Standard Terms and Conditions of Port Access* which are available on the **TasPorts website**.

To the extent permitted at law, no representations or warranties are made by TasPorts as to the content, accuracy or completeness of the information contained in this Schedule or to the interpretations, deductions or conclusions, inferred from or arising out of this Schedule other than the amount of the fees.

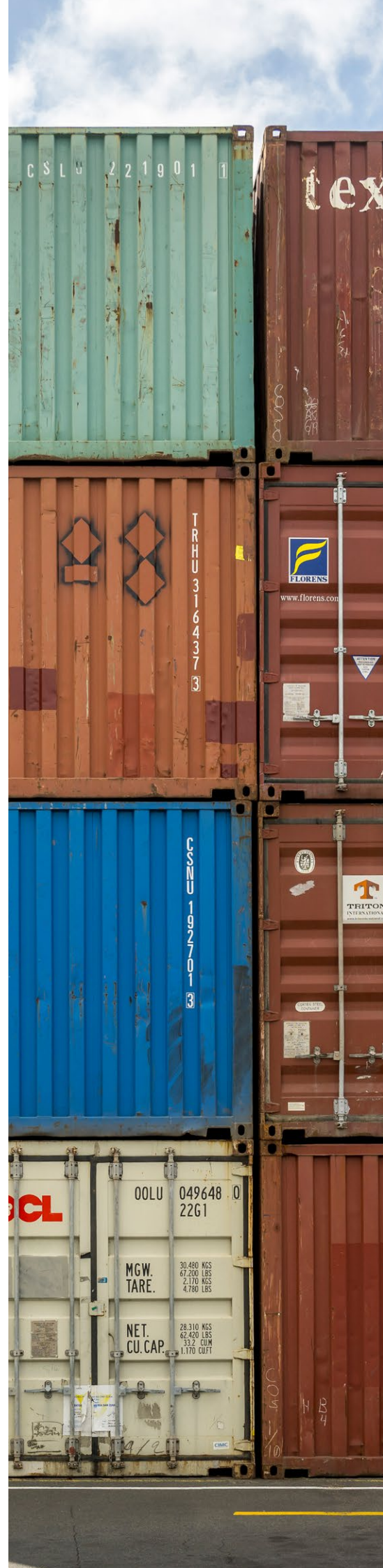
**NOTE: All charges in this Schedule of Port Charges are exclusive of GST.**



# GENERAL CONDITIONS

## DEFINITIONS

<b>CAP</b>	Maximum payable
<b>GRT</b>	Gross Registered Tonnage
<b>GST</b>	Goods and Services Tax
<b>LOA</b>	Length Overall
<b>MAST</b>	Marine & Safety Tasmania
<b>MSIC</b>	Maritime Security Identification Card
<b>PEC</b>	Pilot Exemption Certificate
<b>Pilotage Exempt Master</b>	A vessel's master who holds a PEC issued pursuant to Division 4 of the <i>Marine and Safety (Pilotage and Navigation) Regulations 2017 (TAS)</i>
<b>POA</b>	Price On Application
<b>RORO</b>	Roll-on, Roll-off
<b>Secondary Port Area</b>	Refers to the ports of Coles Bay, Port Arthur and/or Grassy/Naracoopa King Island
<b>Superyacht</b>	Professionally crewed recreational vessel
<b>TEU</b>	Twenty foot (20') Equivalent Units (6.1 metres)
<b>VTS</b>	TasPorts Vessel Traffic Services Centre (VTS Authority in accordance with the provisions of Marine Order 64)



# CONTENTS

<b>01 WHARFAGE</b>	
<b>04 PILOTAGE</b>	
<b>06 TONNAGE</b>	
<b>07 LAY-UP</b>	
<b>09 TOWAGE</b>	
09 Rates of Hire	
09 Additional Period of Towage	
09 Fuel Surcharge	
10 Relocation Charges	
10 Additional Charges	
<b>11 BASS STRAIT HIGH FREQUENCY SHIPPERS</b>	
11 Wharfage	
11 Tonnage	
<b>12 AUSTRALIAN ANTARCTIC PROGRAM</b>	
12 Tonnage	
12 Berthing Fee	
<b>13 CRUISE VESSELS</b>	
13 Wharfage Infrastructure Levy	
13 Pilotage	
14 Tonnage	
14 Berth Services and Occupancy	
<b>15 OTHER CHARGES - EQUIPMENT</b>	
15 Bell Bay Shiploader and Conveyor	
15 Portable Buildings	
15 Equipment and Plant Hire	
16 Equipment Wet Hire	
16 King Island Only	
17 Floating Plant Hire (wet hire only)	
17 Barge Hire (dry hire only)	
<b>18 OTHER CHARGES - ELECTRICITY</b>	
<b>19 OTHER SERVICES &amp; FEES</b>	
19 Stevedoring	
20 Receiving and Despatch (Port of Grassy)	
20 Casual Storage	
20 Berth Set Up for Special Arrangements	
20 Wharf Clean Up	
20 Fresh Water	
20 Labour including Traffic Management (Per Officer)	
20 Weighbridge	
21 Quarantine – available Bell Bay, Burnie and Hobart	
21 Non-cargo Liquid Transfer	
21 Administration	
21 Parking Permits – Hobart	
21 Oil Spill Clean Up	
21 Other	
<b>22 SECURITY</b>	
<b>23 SLIPWAYS</b>	
23 Slipway Charges	
23 Clean Up	
23 Labour Rates	
24 Other Charges – Domain Slip	
<b>25 PORT AND OFFICE LOCATIONS</b>	

All images used throughout this Schedule of Port Charges are credited to Rob Burnett.

# WHARFAGE

TasPorts charges wharfage fees for TasPorts-owned ports and berths.

Wharfage charges apply to all cargoes, loaded on or discharged from vessels or between vessels, while alongside TasPorts' berths, and are payable at the default rate specified for the relevant cargo or by the rate per tonne, cubic metre, or kilolitre specified for the relevant cargo (whichever is the greater).

All cargo is to be declared by manifest by voyage/trip and must note all units of measure specified for all relevant cargo in the table below.

Manifests to be forwarded to [wharfage@tasports.com.au](mailto:wharfage@tasports.com.au) within two (2) business days of vessel departure unless otherwise agreed by the parties.

Specialised project/heavy lift cargo may require price on application.

## NOTE:

Wharfage charges appearing in this section do not apply to Bass Strait High Frequency Shippers. Please refer to the section on Bass Strait High Frequency Shippers for relevant wharfage charges.

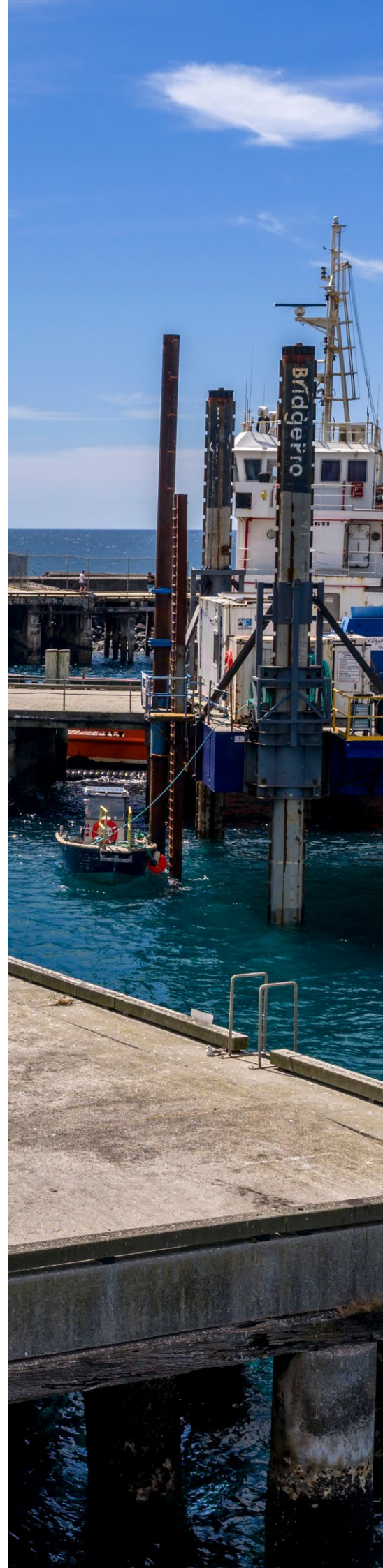
If bunkering, refer to Non Cargo Liquid Transfer (bunkering and waste) charges in the Other Services and Fees section.

**\$ EX GST**

CARGO		
General cargo (non-containerised)	per tonne or cubic metre (minimum charge is one tonne or cubic metre or linear metre whichever is greater)	5.39
Bulk cargo (wet or dry)	per tonne/kilolitre /cubic metre	3.73
Petroleum products	per kilolitre/tonne	5.21
Hydrogen derived fuel products	per kilolitre/tonne	5.21
Liquid bulk - Fire Safety Infrastructure Levy	per kilolitre	1.28
Hydrogen derived fuel products - Safety Infrastructure Levy	per kilolitre/tonne	POA
CONTAINERISED CARGO <sup>(i)</sup>		
Full containers (excluding King and Flinders islands)	per TEU	106.45
Full containers (King and Flinders islands only)	per TEU	132.18
Empty containers	per TEU	30.35

## NOTE:

- (i) TEU = Twenty foot (20') equivalent units (6.1 metres).  
A forty foot (40') (12.2 metres) container will constitute 2 x TEU for charging purposes.  
TEU's "out of gauge" will be charged at the general cargo rate.  
Any cargo not otherwise classified will be charged at the general cargo rate.



# WHARFAGE

\$ EX GST

## TRAILERS UNDER LOAD (EXCLUDING PRIME MOVERS) <sup>(ii)</sup>

20 foot (6.1 metres) (excluding King and Flinders islands)	each	106.45
40 foot (12.2 metres) (excluding King and Flinders islands)	each	212.90
20 foot (6.1 metres) (King and Flinders islands only)	each	132.18
40 foot (12.2 metres) (King and Flinders islands only)	each	264.36
Non standard length trailers (greater than 5 tonne)	per linear metre	36.27

## EMPTY TRAILERS (EXCLUDING PRIME MOVERS) <sup>(ii)</sup>

Empty trailer	per linear metre	15.06
---------------	------------------	-------

## PRIME MOVERS, HEAVY RIGID TRUCKS, BUS AND WHEELED FARM EQUIPMENT (<2.5M WIDE) <sup>(ii), (iii)</sup>

Prime mover, machinery and equipment	per linear metre	36.27
--------------------------------------	------------------	-------

### NOTES:

- (ii) Prime mover and trailer combinations will be treated as separate items for wharfage calculations.
- (iii) Overwidth units to be considered as General Cargo. Dimensions to be provided.

## LIVESTOCK IN TRAILER UNITS

20 foot (6.1 metres)	single and multi deck, per unit	113.47
40 foot (12.2 metres)	single and multi deck, per unit	226.94
Empty livestock trailer return	per linear metre	7.41

## LIVESTOCK (NOT IN TRAILERS)

Small animals (e.g. calves less than 9 months old, sheep, rams and pigs)	per head	1.24
Large animals (e.g. cattle greater than 9 months old and horses)	per head	5.27

# WHARFAGE

\$ EX GST

VEHICLES, CARAVANS AND TRAILERS <sup>(iv)</sup>			
Motor vehicles	up to 5 tonne and 6.5m in length	each	54.56
Motor bikes (incl. bikes and All Terrain Vehicles)	up to 3.0m in length	each	17.47
	above 3.0m in length	each	54.56
Motor vehicles above 6.5m in length, caravans, recreational boat trailers, horse floats and other trailers	up to 5 tonne and 8.0m in length <sup>(v)</sup>	per linear metre	14.87
	above 5 tonne or above 8.0m in length <sup>(v)</sup>	per linear metre	36.27

## NOTES:

(iv) Towing vehicle and trailer combinations will be treated as separate items for wharfage calculations.

(v) Includes towing vehicle length.

## BULK FUEL

Fuel in drums	per 200 litres	3.02
---------------	----------------	------

## TASPORTS INFRASTRUCTURE LEVY (Devonport 5 West RORO Only)

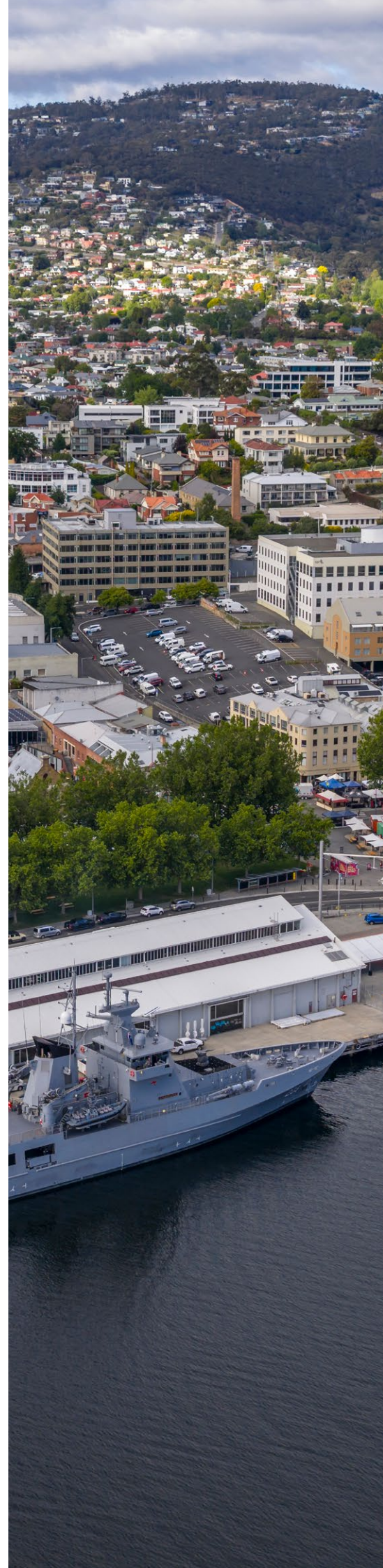
Devonport RORO Ramp Levy	per linear metre (loading/discharging)	7.67
--------------------------	--	------

## ADDITIONAL ADMINISTRATION LEVY <sup>(vi)</sup>

Administration levy	131
---------------------	-----

## NOTE:

(vi) Fee to be issued to the party forwarding the manifest to TasPorts. Documentation service charge e.g. late manifests and/or manifests requiring significant changes resulting in the need for TasPorts to re-invoice. The application of the additional administration levy is at the discretion of TasPorts, taking into account reprocessing time.



# PILOTAGE

A pilot is required for all vessels exceeding 35 metres in LOA whilst in a port pilotage area, unless a Pilotage Exempt Master is in charge of the vessel.

There are limited exemptions in the relevant regulations for naval, military and air force vessels (except in relation to Zone B) and any other specified vessel or class of vessels determined by MAST in writing to be exempt.

Pilotage charges are comprised of a fixed charge plus a charge per GRT as recorded on the relevant vessel's certificate, covering pilot services and pilot launch at the ports of Bell Bay, Burnie, Devonport and Hobart. The GRT charge will only apply to vessels greater than 9,999 GRT.

In addition to the standard pilotage charges referred to above, pilotage transfers may be applicable as set out below.

Scheduled movements cannot be brought forward between the hours of 2200-0600 once this period has commenced on the relevant day.

Please also refer to TasPorts' *Berthing Priority Policies and Procedures* and *Double Berthing Policy* on the **TasPorts website**.

## NOTE:

Pilotage charges appearing on this and the following pages do not apply to cruise vessels. Please refer to the section on cruise vessels for relevant pilotage charges.

**\$ EX GST**

### PILOTAGE ALL VESSELS (EXCLUDING CRUISE SHIPS) <sup>(i), (ii)</sup>

Fixed charge (all vessels)	per pilotage	2,495
GRT charge (to vessels with GRT greater than 9,999 GRT)	per pilotage per GRT	0.154
Inter-berth transfer	per shift <sup>(iii)</sup>	2,495
Pilot transfer - Secondary Port Areas and Port Latta (by launch)	per hour <sup>(iv)</sup>	769
Pilotage Late Change Fee	per pilotage <sup>(v), (viii)</sup>	1,034
Pilotage Cancellation Charge	per pilotage <sup>(vi), (viii)</sup>	1,034
Aborted Pilotage	per pilotage <sup>(vii), (viii)</sup>	100% of the applicable pilotage charge

## NOTES:

- (i) A pilotage exemption run or renewal check run is considered a full pilotage job.
- (ii) Customised quotations can be developed for projects and work that requires marine operations teams (e.g. Pilots, tugs etc.). These will be priced on application and take into consideration the cost of the resource, use of any assets and any other ancillary costs e.g. including but not limited to accommodation and travel.
- (iii) Inter-berth transfer charges apply to all movements of vessels exceeding 35 metres in LOA within a port pilotage area.

# PILOTAGE

- (iv) Charges for over carry or transfer of Pilots to other port areas will be priced on application (where capable of being determined) and otherwise will be charged as third party costs incurred by TasPorts plus a 10% administration fee.
- (v) A late change fee will be applied where a vessel movement is changed within six (6) hours of the time for which a Pilot has been ordered at a port, but prior to a Pilot commencing transfer to a vessel.
- (vi) Cancellation charges apply when a vessel movement is cancelled within six (6) hours of the time for which a Pilot has been ordered at a port, but prior to a Pilot commencing transfer to a vessel.
- (vii) An aborted pilotage charge applies when a vessel movement is aborted after the Pilot has boarded or commenced transfer to vessel.
- (viii) Late change, cancellation and aborted pilotage charges will also be applied in case of adverse weather events or for other safety reasons.

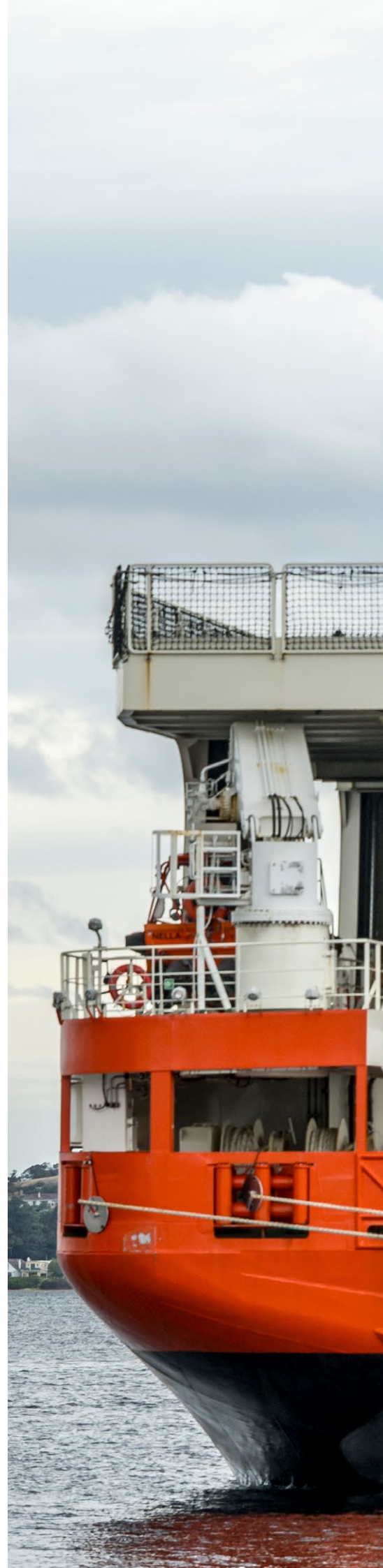
**\$ EX GST**

## PILOTAGE EXEMPTION CERTIFICATE AND RENEWAL CHARGE <sup>(ix)</sup>

Initial Pilotage Exemption Certificate	per certificate per zone	805
Renewal of Pilotage Exemption Certificate	per renewal per zone	403
Renewal of Pilotage Exemption Certificate – low risk vessel e.g. Superyachts	per renewal per zone	POA
Pilotage Master Audit Charge <sup>(x)</sup>	per "check pilotage trip"	100% of the applicable pilotage charge

### NOTES:

- (ix) Exemption certificate and renewal charges apply to all Masters that apply and successfully complete the requirements to become a Pilotage Exempt Master for a particular zone.
- (x) A Pilotage Master Audit Charge applies when a Pilotage Exempt Master requires a "Check Pilot" to undertake onboard practical assessment. Pilotage Master Audits are for authorised movements only, which must be booked in accordance with normal booking procedures. An applicant attempting to obtain an initial pilotage exemption or a renewal of PEC (including low risk vessels) pays the Pilotage Master Audit charge.



# TONNAGE

## SAFETY NAVIGATION

Vessel Tonnage charges apply to all vessels exceeding 35 metres in LOA that enter TasPorts' port pilotage areas (including shipping channels). Charges apply for the first day or part thereof with a reduced charge for each subsequent 24 hour period or part thereof – except for Port Latta, where a different tonnage charge applies by reason of it being a privately operated port and the different costs incurred by TasPorts at that port.

The Vessel Tonnage charge covers those TasPorts' responsibilities under the Deed of Agreement (the Deed) with MAST and the Crown (Environmental Protection Authority), including provision of channel related services. These include responsibilities related to regulatory functions under the Deed including but not limited to Harbour Master responsibilities, all navigation related matters including navigation aids and provision of channels (including maintenance dredging), emergency response, environmental protection, port traffic control services, communications and port security issues.

Please also refer to TasPorts' *Berthing Priority Policies and Procedures* and *Double Berthing Policy* on the **TasPorts website**.

### NOTE:

Tonnage charges appearing in this section do not apply to Australian Antarctic Program (AAP) vessels at the Port of Hobart, Cruise vessels and Bass Strait High Frequency Shippers. Please refer to the relevant sections of this Schedule of Port Charges for these rates.

**\$ EX GST**

### STATEWIDE (EXCLUDING PORT LATTA) <sup>(i), (ii), (iii)</sup>

For the first day (or part thereof) – all vessels > 90m LOA	per GRT	0.789
For the first day (or part thereof) – all vessels ≤ 90m LOA	per GRT	0.429
For each subsequent day (or part thereof) – all vessels	per GRT	0.199

### NOTES:

- (i) Time period commences when vessel is alongside. For vessels only calling at anchor, only first day charge applies and time period commences when vessel reaches inner anchorage position within a port pilotage area. TasPorts' Statewide tonnage charge does not apply to Port Latta, by reason of it being a privately operated port and the different costs incurred by TasPorts at that port.
- (ii) Additional equipment, plant and labour requested for vessel operations that are not directly related to the berthing of the vessel will incur charges at the applicable rate. Security charges will be charged as per the Security Charges section.
- (iii) For vessels loading/discharging cargo, Tonnage Fees apply for each 24 hour period or part thereof when the vessel is loading/discharging cargo. If the vessel remains alongside once loading/discharging has completed, then Lay-up Fees apply.  
For vessels alongside that are not loading/discharging cargo, Tonnage Fees only apply for the first day.

### PORT LATTA <sup>(iv)</sup>

All vessels > 35m LOA	per GRT per visit	0.178
-----------------------	-------------------	-------

### NOTE:

- (iv) Applies upon vessel entry into the port pilotage area for Port Latta. TasPorts' tonnage charge for Port Latta is separate and additional to any charges by or on behalf of the private port operator.

# LAY-UP

## BERTH OCCUPANCY

Use of TasPorts' berths for lay-up is at the discretion of TasPorts. Lay-up use includes:

- mooring at a berth by vessels not intending to transfer cargo
- mooring at a berth by vessels after completion of cargo operations

Provision of a lay-up charge does not provide a guarantee of, or priority use of, any particular berth, mooring or wharf except to the extent granted by TasPorts.

Lay-ups for 14 days or less are by prior arrangement and upon application through TasPorts' booking system.

TasPorts' lay-up charges apply to TasPorts-owned berths. Inner anchorage within port pilotage areas greater than 24 hours will be POA.

### NOTE:

Lay-up charges appearing in this section do not apply to Australian Antarctic Program vessels at the Port of Hobart. Please refer to the Australian Antarctic Program Berthing Fee section for relevant charges.

Berthing enquiries for fishing, non-cargo and recreational vessels not exceeding 35m LOA should be directed to [property@tasports.com.au](mailto:property@tasports.com.au).

**\$ EX GST**

### VESSELS (CARGO) <sup>(i)</sup>

Regardless of LOA

Lay-up Fee	per GRT / per day	0.199
Lay-up greater than 14 days	subject to availability	POA

### VESSELS (NON CARGO) <sup>(ii), (iii)</sup>

Lay-up Fee	per GRT / per day	0.199
Lay-up Fee (minimum daily charge)	first day and subsequent days	1,286
Lay-up greater than 14 days	subject to availability	POA

### NOTES:

- (i) For vessels exceeding 35m LOA that are loading/discharging cargo, Tonnage Fees apply for each 24 hour period or part thereof when the vessel is loading/discharging cargo. Lay-up Fees do not apply during this period. If the vessel remains alongside once loading/discharging has completed, then Lay-up Fees apply.
- (ii) For vessels alongside that are not loading/discharging cargo, Lay-up Fees apply from the first day onwards. Additionally, first day Tonnage Fees apply for vessels exceeding 35m LOA.
- (iii) Non recreational vessels regardless of LOA.  
Superyachts regardless of LOA.  
Recreational vessels >35m LOA.

**FEE PER DAY**  
**(\$ EX GST)**

**FEE PER WEEK**  
**(\$ EX GST)**

### RECREATIONAL VESSELS EXCLUDING SUPERYACHTS <sup>(iv)</sup>

Vessels up to 15 metres	150	300
Vessels - 16+ metres	POA	POA

### NOTE:

- (iv) No fee is charged for recreational vessels excluding Superyachts visiting King Island, Flinders Island, and Stanley.

# LAY-UP

## BERTH OCCUPANCY

FEE PER ANNUM  
(\$ EX GST)

KINGS PIER MARINA BERTHS	
Berth - 10 metres	6,650
Berth - 12 metres	8,700
Berth - 14 metres	10,250
Berth - 15 metres	12,300
Berth - 16+ metres	POA

\$ EX GST

FISHING VESSELS (≤ 35M LOA)		
Visiting fishing vessels	per 24 hour period or part thereof	120
Annual fishing vessel registration		POA

# TOWAGE

TasPorts operates harbour tugs, which are available to provide towage services to the ports located at Bell Bay, Burnie, Devonport, Hobart, Port Latta and Stanley. TasPorts Towage offers a range of services, including harbour towage, emergency towage and contract towage for specialist jobs.

Refer to **TasPorts' website** for TasPorts' reference documents and forms (including *Standard Conditions for Towage and Other Services*) and the *Ports Procedures Manual* for further information, including in relation to tug requirements.

Please also refer to TasPorts' *Berthing Priority Policies and Procedures* and *Double Berthing Policy* on the **TasPorts website**.

## RATES OF HIRE

Hire Rate per tug is calculated as per below Towage tables (Base Rate plus GRT Rate) for handling a vessel within a three (3) nautical mile radius of the relevant berth. For the ports of Burnie, Devonport, Port Latta and Stanley, this charge is for the first 2 hours. For the ports of Bell Bay and Hobart, this charge is for the first 2.5 hours.

Hire Rate period of towage commences when a tug begins service.

### NOTE:

Tug requirements for the next day's shipping must be confirmed with TasPorts VTS by 1600 hours.

Scheduled movements cannot be brought forward between the hours of 2200-0600 once this period has commenced on the relevant day.

**\$ EX GST**

HIRE RATE (PER TUG)	
Base Rate	1,637
GRT Rate	0.550
Minimum Hire Rate	7,082
Maximum Hire Rate	15,009

## ADDITIONAL PERIOD OF TOWAGE

Additional period of towage Hire Rates will be charged at 25% of the applicable Hire Rate per tug, per 60 minutes, or part thereof, once the initial Hire Rate period has expired.

## FUEL SURCHARGE

A fuel surcharge is charged per tug engaged. This surcharge shall be adjusted monthly and is available on request.



# TOWAGE

## RELOCATION CHARGES

If an operational requirement requires a tug with specialist capability of specific bollard pull, a relocation charge will apply if that vessel has to be brought in from another port. Relocations to ports not listed in the below table will be priced on application.

**\$ EX GST**

RELOCATION CHARGES (TO/FROM PORT)				
	STANLEY/PORT LATTA	BURNIE	BELL BAY	DEVONPORT
DEVONPORT	6,864	3,443	4,147	-
BELL BAY	10,633	6,899	-	4,147
BURNIE	4,108	-	6,899	3,443

## ADDITIONAL CHARGES

ADDITIONAL CHARGES (PER TUG) <sup>(i)</sup>	
Vessels not under power (dead ship)	150% of the applicable hire rate
Escort	100% of the applicable hire rate
Cancellation or Deferment <sup>(ii), (v)</sup>	4,104
Late order for towage <sup>(iii), (v)</sup>	4,104
Aborted towage <sup>(iv), (v)</sup>	100% of the applicable hire rate
Assisting the vessel (crew on standby on board the tug at the tug berth or tug in attendance standing by the vessel)	100% of the applicable hire rate

### NOTE:

- (i) Charges for sundry or special services not otherwise covered above will be priced on application.
- (ii) A cancellation fee will be charged when towage is cancelled or deferred within six (6) hours of the time for which a tug service has been ordered.
- (iii) A late order fee will be charged where tugs are ordered with less than six (6) hours notice.
- (iv) An aborted towage fee applies when a tug service is aborted after the tug has commenced transit to vessel.
- (v) Cancellation, deferment and aborted towage charges will also be applied in case of adverse weather events or for other safety reasons.

# BASS STRAIT HIGH FREQUENCY SHIPPERS

## NOTE:

The below wharfage and tonnage rates apply to Bass Strait High Frequency Shippers only. This classification refers to customers who operate frequent scheduled turn around sailings at least five (5) days per week, to/from Tasmania and a mainland Australian state.

## WHARFAGE

		<b>\$ EX GST</b>
Full TEU	per TEU <sup>(i)</sup>	67.47
Empty TEU	per TEU <sup>(i)</sup>	0.00
Trade Vehicles	each	17.73
Accompanied Passenger Vehicles	each	0.00

## NOTE:

- (i) TEU = Twenty foot (20') equivalent units (6.1 metres).  
A forty foot (40') (12.2 metres) container will constitute 2 × TEU for charging purposes.  
Non-standard length items are calculated on a pro rata basis (i.e. total length of all units shipped, divided by 6.1 metres).

## TONNAGE <sup>(ii)</sup>

All vessels > 35m LOA	per vessel GRT per sailing	0.212
-----------------------	----------------------------	-------

## NOTE:

- (ii) Tonnage charges apply upon vessel entry into TasPorts' port pilotage areas. Further information about the Tonnage charge can be viewed in the Tonnage section of this Schedule of Port Charges.

# AUSTRALIAN ANTARCTIC PROGRAM

The below tonnage and berthing rates apply to Australian Antarctic Program (AAP) vessels at the Port of Hobart only. All other fees will be charged in accordance with this Schedule of Port Charges.

## TONNAGE

Vessel Tonnage charges apply to all vessels exceeding 35 metres in LOA. Charges only apply for the first day or part thereof, with a reduced Berthing Fee for each subsequent 24 hour period or part thereof.

### NOTE:

Further information about the Tonnage charge can be viewed in the Tonnage section of this Schedule of Port Charges.

		\$ EX GST
<b>PORT OF HOBART <sup>(i)</sup></b>		
For the first day (or part thereof) – all vessels > 90m LOA	per GRT	0.789
For the first day (or part thereof) – all vessels ≤ 90m LOA	per GRT	0.429

## BERTHING FEE

The Berthing Fee is applied for each 24 hour period (or part thereof) during which a vessel is alongside a berth at the Port of Hobart.

For vessels exceeding 35 metres in LOA, the Berthing Fee is not payable during the first day alongside.

<b>PORT OF HOBART <sup>(i)</sup></b>		
For each 24 hour period – all vessels	per GRT / per day	0.203

### NOTE:

- (i) Time period commences when vessel is alongside. For vessels only calling at anchor, time period commences when vessel reaches inner anchorage position within a port pilotage area.

# CRUISE VESSELS

## NOTE:

In addition to the below, charges may apply as per TasPorts' *Cruise Ship Booking Cancellation Policy* for calls cancelled within 22 months prior to the booked call. This policy is available on the **TasPorts website**.

## WHARFAGE INFRASTRUCTURE LEVY – CRUISE VESSELS ≥ 70,000 GRT

A Wharfage Infrastructure Levy will apply for all large cruise vessels of 70,000 GRT, or greater. This levy applies for port calls only and is charged per GRT per visit, at the ports of Bell Bay, Burnie, Devonport and Hobart.

**\$ EX GST**

WHARFAGE INFRASTRUCTURE LEVY CRUISE VESSELS ≥ 70,000 GRT		
Wharfage Infrastructure Levy	per GRT	0.301
Wharfage Infrastructure Levy	CAP	35,986

## PILOTAGE

A Pilot is required for all vessels exceeding 35 metres in LOA, whilst in a port pilotage area, unless a Pilotage Exempt Master is in charge of the vessel. Pilotage charges comprise a fixed charge plus a charge per GRT, covering pilot services and pilot launch at the ports of Bell Bay, Burnie, Devonport and Hobart. The GRT charge will only apply to vessels greater than 9,999 GRT. For Secondary Port Areas the standard pilotage charges apply as below and pilot transfer charges will apply.

PILOTAGE		
Fixed charge	per pilotage	2,495
GRT charge (for vessels with GRT > 9,999 GRT)	per pilotage per GRT	0.154
Inter-Berth transfer	per shift <sup>(i)</sup>	2,495
Extended Pilotage – Secondary Port Areas (Expedition Cruise ≤ 9,999 GRT)	per hour <sup>(ii)</sup>	415
Pilotage Late Change Fee	per pilotage <sup>(iii), (vi)</sup>	1,034
Pilotage Cancellation Charge – Port Call	per pilotage <sup>(iv), (vi), (vii)</sup>	1,034
Aborted Pilotage – Port Call	per pilotage <sup>(v), (vi), (vii)</sup>	2,495

### NOTES:

- (i) Inter-berth transfer charges apply to all movements of vessels exceeding 35 metres in LOA within a port pilotage area.
- (ii) In addition to the fixed pilotage charge, an extended pilotage hourly rate will apply where a Pilot is attending to a vessel (including transfer to/from) for longer than four (4) hours in duration.
- (iii) A late change fee will be applied where a vessel movement is changed within six (6) hours of the time for which a Pilot has been ordered at a port, but prior to a Pilot commencing transfer to a vessel.
- (iv) Cancellation charges apply when a vessel movement is cancelled within six (6) hours of the time for which a Pilot has been ordered at a port, but prior to a Pilot commencing transfer to a vessel.
- (v) An aborted pilotage charge applies when a vessel movement is aborted after the Pilot has boarded or commenced transfer to vessel.
- (vi) Late change, cancellation and aborted pilotage charges will also be applied in case of adverse weather events or for other safety reasons.
- (vii) 50% of the applicable pilotage rate will be charged when a vessel call at a Secondary Port Area is aborted or cancelled once the Pilot has departed from their home port.

# CRUISE VESSELS

\$ EX GST

PILOT TRANSFERS <sup>(viii)</sup>			
Pilot launch	Ex/To Port Arthur	per transfer	4,890
	Ex/To Coles Bay	per transfer	9,721
Road	Ex/To Port Arthur ≤ 9,999 GRT	per transfer	1,313
	Ex/To Port Arthur > 9,999 GRT	per transfer	483
	Ex/To Coles Bay ≤ 9,999 GRT	per transfer	1,975
	Ex/To Coles Bay > 9,999 GRT	per transfer	730

**NOTE:**

(viii) Charges for over carry or transfer of pilots not listed above will be priced on application (where capable of being determined) and otherwise will be charged as third party costs incurred by TasPorts plus a 10% administration fee. Method of transfer will be determined at TasPorts' discretion and may not be advised until 24 hours prior to scheduled call.

## TONNAGE

Vessel Tonnage charges apply to all vessels exceeding 35 metres in LOA. Charges apply for the first day or part thereof with a reduced charge for each subsequent 24 hour period or part thereof. Time period commences when vessel is alongside. For vessels only calling at Bell Bay's inner anchorage position, only first day tonnage charges apply.

**NOTE:**

Further information about the Tonnage charge can be viewed in the Tonnage section of this Schedule of Port Charges.

BELL BAY, BURNIE, DEVONPORT AND HOBART		
For the first day (or part thereof)	per GRT	0.420
For each subsequent day (or part thereof)	per GRT	0.199

## BERTH SERVICES AND OCCUPANCY

A flat *Berth Services and Occupancy* fee applies to all cruise vessels calling at Hobart, Burnie, Devonport and Bell Bay. The charge covers the use of the berth, terminals, services to support berth set-up and passenger disembarkation/embarkation including gangways (and equipment to position gangways excluding any third-party services such as crane hire), Landside Restricted Zone fencing, portable buildings to support regulated vessel arrangements, utility connections/disconnections and associated labour.

**NOTE:**

Additional equipment, plant and labour requested for vessel operations that are not directly related to the berthing of the vessel will be charged in line with the relevant section of this Schedule of Port Charges.

Security charges will be charged as per the Security Charges section.

BERTH SERVICES AND OCCUPANCY CHARGE <sup>(ix)</sup>			
Cruise vessels	>9,999 GRT	per visit	14,210
Expedition cruise vessels	≤9,999 GRT	per visit	5,378

**NOTE:**

(ix) Charge applies in Bell Bay, Burnie, Devonport and Hobart.

# OTHER CHARGES - EQUIPMENT

## NOTE:

Equipment may not be available at all ports. Please contact TasPorts regarding equipment availability.

**\$ EX GST**

### BELL BAY SHIPLOADER AND CONVEYOR <sup>(i)</sup>

The following rates apply to customers who use TasPorts' shiploader and/or conveyor to transport bulk product in the Port of Bell Bay. If both the shiploader and the conveyor are utilised by a customer both charges are payable.

TasPorts has commissioned a new telescoping shiploader at the Port of Bell Bay, and amended rates will apply once the new shiploader has become operational. The existing shiploader will become non-operational once the new telescoping shiploader becomes operational.

Bell Bay Conveyor	per gross metric tonne	1.428
Bell Bay Existing Shiploader	per gross metric tonne	1.428
Bell Bay proposed new Telescoping Shiploader (once operational)	per gross metric tonne	2.170

## NOTE:

- (i) Refers to all of TasPorts' conveyor system including Section 2 (below rail to slew), Section 3 (slew) and Section 4 (slew to shiploader).

### PORTABLE BUILDINGS

Portable Amenities Unit	per 24 hour period or part thereof	420
Portable Office/Security - inclusive of power where available	per 24 hour period or part thereof	155

### EQUIPMENT AND PLANT HIRE <sup>(ii)</sup>

Ships Gangway Hire (Gangway Only) ≤ 10m	per 24 hour period or part thereof	183
Ships Gangway Hire (Gangway Only) > 10m	per 24 hour period or part thereof	294
Passenger Boarding System including 14m gangway (cruise ships)	per 24 hour period or part thereof	732
Bulk Commodity Hopper	per tonne or cubic metre (whichever is greater)	0.65
Dust Collector (including power)	per 24 hour period or part thereof	2,454
Safety cage	per 24 hour period or part thereof	111
Pressure cleaner	per 24 hour period or part thereof	223
Medium size portable fender hire	per 24 hour period or part thereof + other charges if applicable <sup>(iii)</sup>	192
Large size portable fender hire	per 24 hour period or part thereof + other charges if applicable <sup>(iii)</sup>	274

## NOTES:

- (ii) Charges for the transport, placing and removing of equipment will be in accordance with the prevailing mechanical equipment and labour hire rates, as specified in this Schedule.
- (iii) If install, removal, transport and/or repairs to any damage is required these will be on-charged to the customer at cost plus 10%.

# OTHER CHARGES - EQUIPMENT

\$ EX GST

## EQUIPMENT WET HIRE

The following rates apply if the equipment is available (wet hire only). Hire charge rates for the equipment listed during normal business hours of 0730 -1630 are as follows. Out of hours rates are available upon request. If contractor call out is required, contractor charges will apply plus 10%.

Crane hire (10 tonne or less) <sup>(iv)</sup>	per hour or part thereof	210
Crane hire (above 10 tonne) <sup>(iv)</sup>	per hour or part thereof	257
Forklift hire (10 tonne and above)	per hour or part thereof	210
Forklift hire (5-9 tonne)	per hour or part thereof	121
Telehandler	per hour or part thereof	175
Elevated work platform	per hour or part thereof	379
Branson tractor	per hour or part thereof	107
Sweeper	per hour or part thereof	183
Tip truck	per hour or part thereof	223
Remotely Operated Vehicle	per hour or part thereof	121

### NOTE:

(iv) Minimum of four (4) hour hire on King Island.

## EQUIPMENT WET HIRE - KING ISLAND ONLY <sup>(v)</sup>

The following rates apply if the equipment is available (wet hire only). Hire charge rates for the equipment listed during normal business hours of 0730-1630 are as follows.

Prime mover	per hour or part thereof	163
20 ft and 40 ft side loader (trailer only)	per hour or part thereof	150
Wheel loader	per hour or part thereof	150
Skel trailer	per 24 hour period or part thereof	49
Terberg	per hour of part thereof	177
Track Skid Steer and attachments	per hour of part thereof	148
Fire Fighting Pump - dry hire (dust suppressions etc.)	per hour of part thereof	47
Transport Dangerous Goods surcharge (e.g. fuel, gas and explosives)	per container/ISO (empty/full)	118

### NOTE:

(v) The Port of Grassy, King Island, is closed on Picnic Day, Easter Good Friday, ANZAC Day and Christmas Day. Out of hours equipment rates apply for these port closed days and are available on request.

# OTHER CHARGES - EQUIPMENT

\$ EX GST

## FLOATING PLANT HIRE (WET HIRE ONLY) <sup>(vi)</sup>

Launch hire (e.g. mooring line and life boat drills etc.)	per two (2) hour period	1,019
Pilot launch hire	per hour or part thereof	1,359
Work Punt	per hour or part thereof (4 hour minimum)	183
Work Boat	per hour or part thereof (4 hour minimum)	425
Landing barge <i>Kulanda</i>	per eight (8) hour day or part thereof (8 hour minimum)	7,393
Cancellation Fee <sup>(vii), (viii)</sup>	50% of the applicable Hire Rate	
Late Change Fee <sup>(ix)</sup>	50% of the applicable Hire Rate	
Aborted Fee <sup>(x)</sup>	100% of the applicable Hire Rate	

### NOTES:

- (vi) Scheduled movements cannot be brought forward between the hours of 2200-0600 once this period has commenced on the relevant day.
- (vii) A cancellation fee will be charged when hire of Launch, Work Punt and/or Work Boat is cancelled within six (6) hours of the scheduled time for which Launch, Work Punt and/or Work Boat has been ordered.
- (viii) A cancellation needs to be provided within five (5) working days to avoid the minimum charge being applied to Landing Barge *Kulanda*.
- (ix) A late change fee will be charged when hire of Launch, Work Punt and/or Work Boat is changed within six (6) hours of the scheduled time for which Launch, Work Punt and/or Work Boat has been ordered.
- (x) An Aborted Fee applies when a Launch, Work Punt and/or Work Boat hire is aborted after hire has commenced. This includes hire that has been aborted due to adverse weather events or for other safety reasons.

## BARGE HIRE (DRY HIRE ONLY) <sup>(xi), (xii), (xiii)</sup>

Barge <i>TB Rufus</i>	per 24 hour period or part thereof	1,032
Barge Massif	per 24 hour period or part thereof	1,368
Barge mobilisation fee inclusive of standard crew, overtime rates apply.		POA

### NOTES:

- (xi) If labour is required, refer to the Other Services and Fees section of this Schedule of Port Charges.
- (xii) Hire rates may vary subject to length of hire and location. Minimum hire period is 7 days.
- (xiii) Prices are only a guide. Contact TasPorts for a formal quote outlining your requirements.

# OTHER CHARGES - ELECTRICITY

\$ EX GST

## ELECTRICAL SERVICES - SHIP RELATED CONNECTIONS/ DISCONNECTIONS AND ISOLATIONS

In hours 0730 - 1630 Monday - Friday	per connection / per disconnection / per isolation	212
Out of hours call out	per connection / per disconnection / per isolation	811

## ELECTRICITY

Metered supply	per kilowatt hour	0.46
----------------	-------------------	------

## Unmetered supply (per connection)

Single phase	per 24 hour period or part thereof	27.48
Three phase	per 24 hour period or part thereof	86.02
Refrigerated containers	per 24 hour period or part thereof	73.07



# OTHER SERVICES AND FEES

Unless otherwise specified or agreed, where there is an arrangement between TasPorts and a customer that TasPorts will incur costs on the customer's behalf, these costs will be on-charged to the customer plus 10%.

## NOTE:

Services may not be available at all ports. Please contact TasPorts regarding the availability of services.

**\$ EX GST**

### STEVEDORING <sup>(i)</sup>

#### License Fees

Stevedoring licence fees <sup>(ii)</sup>	per 24 hour period or part thereof	434
--	------------------------------------	-----

#### NOTES:

- (i) TasPorts provides stevedoring services at the Port of Grassy (King Island). Although TasPorts does not ordinarily provide stevedoring services at the Port of Lady Barron (Flinders Island), it may do so if at least 14 days' written notice is provided. In such cases, charges will be calculated on the same basis as those for the Port of Grassy, as outlined below.
- (ii) All persons wishing to undertake stevedoring operations within TasPorts' facilities must be licensed to do so by TasPorts. All stevedoring days to be applied to be determined on application depending on port storage and stevedoring arrangements.

### Stevedoring Charges (Flinders Island) <sup>(iii)</sup>

Stevedoring/management fee <sup>(iv)</sup>	per seven (7) hour period	1,024
	per five (5) hour period	584
	extra hours over and above seven (7), per hour	146

#### NOTES:

- (iii) The Port of Lady Barron, Flinders Island, is closed on Flinders Island Show Day, Easter Good Friday, ANZAC Day, and Christmas Day. Additional stevedoring charges apply for these port closed days and are available on request.
- (iv) Applicable in case TasPorts provides stevedoring oversight on Flinders Island.

### Stevedoring Charges (Port of Grassy) <sup>(v)</sup>

Stevedoring – fixed (including, two persons, management fee + equipment)	per seven (7) hour period	3,593
	per five (5) hour period	2,054
Stevedore (one person) – no stevedoring equipment required	per person per seven (7) hour period	878
	per person per five (5) hour period	501
Stevedoring – extra hours	per person per hour	125
Additional container forklift (not including operator)	per hour	165
Terberg (not including operator)	per hour	113

#### NOTE:

- (v) The Port of Grassy, King Island, is closed on Picnic Day, Easter Good Friday, ANZAC Day and Christmas Day. Additional stevedoring charges apply for these port closed days and are available on request.

# OTHER SERVICES AND FEES

\$ EX GST

<b>RECEIVAL AND DESPATCH (PORT OF GRASSY)</b>		
Between 0730 and 1600 hours, Monday to Friday (includes operator and forklift)	per 15 minutes or per forklift lift	74
Receival and despatch (with no equipment required)	per 15 minutes	34
<b>CASUAL STORAGE</b>		
Casual storage	per 100m <sup>2</sup> per week or part thereof	170
Casual storage - undercover	per 100m <sup>2</sup> per week or part thereof	320
<b>BERTH SET UP FOR SPECIAL ARRANGEMENTS</b>		
Dangerous Goods Class 1 - Berth set up for explosive vessels		422
Dangerous Goods Class 3 - Berth setup for fuel vessels (Port of Bell Bay only)		422
<b>WHARF CLEAN UP <sup>(vi)</sup></b>		
Per plant and equipment hire if utilised <sup>(vii)</sup>	per sailing	278
<b>NOTES:</b>		
(vi) If TasPorts reasonably considers this is required following vessel departure.		
(vii) If contractor call out required, contractor charges will apply plus 10%.		
<b>FRESH WATER</b>		
Connection fee	per connection <sup>(viii)</sup>	424
Supply	per kilolitre	2.40
<b>NOTE:</b>		
(viii) Includes connection and disconnection.		
<b>LABOUR INCLUDING TRAFFIC MANAGEMENT (PER OFFICER) <sup>(ix)</sup></b>		
In hours 0730 - 1630 Monday - Friday	per hour or part thereof	107
Out of hours Monday - Friday	per hour or part thereof	214
Weekends and Public Holidays	minimum charge <sup>(x)</sup>	548
	per hour or part thereof <sup>(x)</sup>	214
<b>NOTES:</b>		
(ix) A labour charge may be charged for organised escorts that are not normal operational or maintenance.		
(x) Whichever is greater.		
<b>WEIGHBRIDGE</b>		
Fee	per weigh	13.30

# OTHER SERVICES AND FEES

\$ EX GST

QUARANTINE - AVAILABLE BELL BAY, BURNIE AND HOBART		
Fumigations using recapture equipment (Bell Bay only) <sup>(xi)</sup>	per container	362
Quarantine fumigation pad hire (first day)	per day or part thereof	420
Quarantine fumigation pad hire (subsequent days)	per day or part thereof	246
Wash bay under biosecurity directions (where available and where pre approved arrangements with TasPorts are not in place)	per day or part thereof	546
Wash bay (general purpose as classified by TasPorts)	per day or part thereof	425

**NOTE:**

(xi) Includes access to fumigation pad and use of fumigation equipment. Fumigator will add service fee to the above base price.

NON-CARGO LIQUID TRANSFER		
Fuel bunkering and waste (permit required) <sup>(xii)</sup>	per litre	0.0065
	minimum charge up to four (4) hours	928
Fire watch person petroleum vessels	plus per hour or part thereof after four (4) hours	232

**NOTE:**

(xii) Fuel bunkering is charged to the vessel for the provision of fuelling infrastructure and maintenance as well as a fee towards maintaining the fire fighting systems and capabilities.

ADMINISTRATION		
Late vessel booking fee <sup>(xiii)</sup>		701
Additional administration levy <sup>(xiv), (xv)</sup>		131

**NOTES:**

(xiii) Applies for bookings made within 72 hours of arrival time.

(xiv) Documentation service charge e.g. late manifests and/or manifests requiring significant changes resulting in the need for TasPorts to re-invoice. The application of the additional administration levy is at the discretion of TasPorts taking into account reprocessing time.

(xv) All wharfage cargo is to be declared by manifest by voyage/trip and should be forwarded to **wharfage@tasports.com.au** within two (2) business days of vessel departure, unless otherwise agreed by the parties.

PARKING PERMITS - HOBART <sup>(xvi)</sup>		
Macquarie Point	per month or part thereof	295
Daily temporary	per day	65

**NOTE:**

(xvi) Subject to availability.

OIL SPILL CLEAN UP		
Charged on the basis of full cost recovery plus 10%. TasPorts' plant and equipment is charged at the full hire rate.		

OTHER		
Any other equipment, covered storage and areas of land for cargoes and port related uses		POA

# SECURITY

\$ EX GST

SECURITY (i), (ii)		
Security/Screening Officer (minimum of four (4) hour charge applies)	per hour or part thereof	100
Security Screening Equipment – passenger and hand luggage screening	per day or part thereof	2,306
Security Screening Equipment Van – checked baggage screening	per van, per day or part thereof	1,941
Under Wharf Security Sweep (visual inspection) – vessels with Waterside Restricted Zone (WRZ)	per vessel arrival	328
Temporary Access Card (TAC) for a MSIC not printed on an integrated access card	per card	35
TasPorts Site Access Pass (SAP) (non regulated sites but access card is required)	per card	138
Crew Identification Access Card (casual crew for domestic home port vessels inside security regulated port)	per card	138
Replacement TAC, SAP or Crew Identification Access Card (original card lost or damaged)	per card	35
Express postage and handling charges for all TAC, SAP and Crew Identification Access Cards	per card	8.70

## NOTES:

- (i) A cancellation charge of four (4) hours applies when security arrangements are cancelled within four (4) hours of start time for which they were booked.
- (ii) Cancellation of screening equipment bookings less than six (6) hours prior to the equipment booking incurs a 20% fee of original booking period.



# SLIPWAYS

## SLIPWAY CHARGES (\$ EX GST)

LOCATION	HAUL OUT	RETURN TO WATER	HIRE (PER DAY)	POWER (PER DAY WHEN UTILISED)
<b>No. 1 Domain</b>	\$4,012 plus \$60 per metre in excess of 30 metres LOA	\$800	\$605 plus \$133 per metre in excess of 22 metres LOA	\$119
<b>No. 2 Domain</b>	\$536 plus \$28 per metre in excess of 15 metres LOA	\$401	\$266 plus \$47 per metre in excess of 15 metres LOA	\$110
<b>No. 3 Domain</b>	\$289	\$104	\$104	\$85
<b>King Island</b>	\$413	\$206	\$139	\$85
<b>Flinders Island</b>	\$413	\$206	\$139	\$85

### NOTE:

Weight limitations apply on all slipways.

## CLEAN UP

If a customer has not complied with the final clean up procedures as notified to them by TasPorts from time to time, then a clean up fee is payable by the customer to TasPorts. The fee is applied for cleaning up and disposing of any material left at the slip yard, and is calculated based on:

- TasPorts' labour fees and equipment hire fees (as required) as set out in the Other Services and Other Charges - Equipment parts of this Schedule of Port Charges; and
- any third party fees plus 10%.

## LABOUR RATES <sup>(i)</sup>

		\$ EX GST
Slipway Supervisor	per hour or part thereof (minimum of four (4) hours)	127
Labourer - general purpose	per hour or part thereof (minimum of four (4) hours)	110
All contracted trades people	Invoiced cost plus 10% will be charged back to the client	POA

### NOTE:

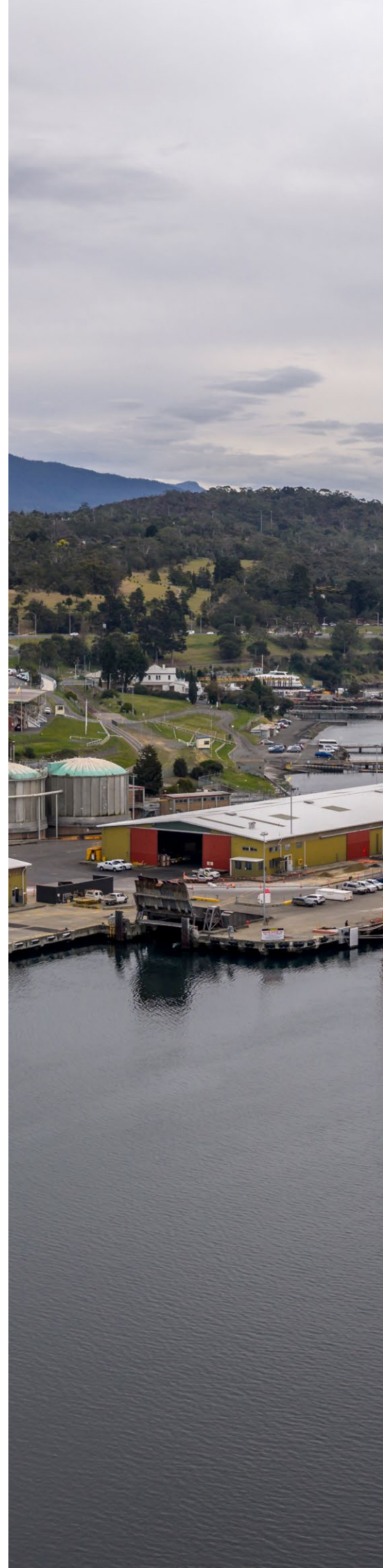
- Applicable to all slips and work carried out on behalf of Clients between the hours of 0730 - 1630, Monday - Friday. Rates for the provision of Labour out of hours on weekdays, weekends and public holidays will be available on request.

# SLIPWAYS

## OTHER CHARGES – DOMAIN SLIP

\$ EX GST

LAY-UP BERTH		
First 24 hours	per 24 hour period or part thereof	116
After first 24 hours	per day, pro-rata in six (6) hour blocks or part thereof	116
OTHER CHARGES		
Wastewater Treatment System and Maintenance Levy – Domain No. 1	per 24 hour period or part thereof	303
Wastewater Treatment System and Maintenance Levy – Domain No. 2 and No. 3	per 24 hour period or part thereof	106
Access Platform Hire	per 24 hour period or part thereof	108
Pressure washer	per hour or part thereof	54
Telehandler	per hour or part thereof	182
Workshop space	As determined by the Slipway Supervisor, subject to availability	POA
Waste oil and sludge removal	If required and arranged by the Slipway Supervisor, the invoiced cost plus 10% will be charged back to the client.	POA
Diver Hire	If required and arranged by the Slipway Supervisor, the invoiced cost plus 10% will be charged back to the client.	POA
Crane Hire	If required, a crane will be engaged by the Slipway Supervisor and the invoiced cost plus 10% will be charged back to the client.	POA





**TASMANIAN PORTS  
CORPORATION PTY LTD  
(TASPORTS)**

[www.tasports.com.au](http://www.tasports.com.au)  
**1300 366 742**

ABN 82 114 161 938

**LAUNCESTON OFFICE**

90 Willis Street, Launceston\*  
PO Box 1060, Launceston 7250

\* Registered Office

**HOBART OFFICE**

Levels 3, 5 & 6, Marine Board  
Building,  
1 Franklin Wharf, Hobart  
GPO Box 202, Hobart 7000

**PORT OF BELL BAY**

Mobil Road, Bell Bay  
Locked Bag 4, George Town 7253

**PORT OF BURNIE**

Port Road, Burnie  
PO Box 216, Burnie 7320

**PORT OF DEVONPORT**

48 Formby Road, Devonport  
PO Box 478, Devonport 7310

**PORT OF HOBART**

Ground Floor,  
Port Tower Building, Hobart  
GPO Box 202, Hobart 7000

**PORT OF STANLEY**

Wharf Road, Stanley 7331

**DEVONPORT AIRPORT**

Airport Road, Devonport 7307

**FLINDERS ISLAND**

Lady Barron, Flinders Island 7255

**KING ISLAND**

285 Grassy Harbour Road,  
Grassy, King Island  
PO Box 341, Currie, King Island 7256

**PRICING AND NEW BUSINESS ENQUIRIES**

Telephone: **1300 366 742**

Email: [commercial@tasports.com.au](mailto:commercial@tasports.com.au)

