

# SCHEDULE OF PORT CHARGES

EFFECTIVE FROM 1 JULY 2024





# GENERAL CONDITIONS

This Schedule of Port Charges sets out fees for some of the services provided by TasPorts and is effective from 1 July 2024.

The Schedule of Port Charges applies to standard services offered by the Tasmanian Ports Corporation Pty Ltd (TasPorts), in the absence of any other agreement with TasPorts to the contrary. Fees for non-standard services will be applied in accordance with any Port Services Agreement in place with the relevant customer. If a Port User's access request involves new capital investment then the price information in the Schedule of Port Charges document may require adjustment.

TasPorts may issue a revised Schedule of Port Charges at any time.

If the nature or costs of providing a service change due to a new requirement of MAST or the Harbour Master, or other legal or regulatory requirement, TasPorts will use its best endeavours to give reasonable notice of the revised Schedule of Port Charges.

In other cases, the following notice periods will apply:

- For revisions of pricing taking effect on 1 July of any year, TasPorts will endeavour to publish the revised schedule by 31 May in that year.
- Revisions of pricing within a financial year will be advised to Port Users 60 days before the date of effect and published with at least 30 days' notice of effect.

All services provided by TasPorts including, but not limited to, the services referred to in this Schedule are provided subject to the Standard Terms and Conditions of Port Access which are available on the **TasPorts website**.

Except to the extent implied by law, no representations or warranties are made by TasPorts as to the content, accuracy or completeness of the information contained in this Schedule or to the interpretations, deductions or conclusions, inferred from or arising out of this Schedule other than the amount of the fees.

All charges are exclusive of GST.

## DEFINITIONS

<b>\$ EX GST</b>	Australian Dollars (excluding GST)
<b>CAP</b>	Maximum payable
<b>GA</b>	General Aviation
<b>GRT</b>	Gross Registered Tonnage
<b>GST</b>	Goods and Services Tax
<b>LOA</b>	Length Over All
<b>PEC</b>	Pilot Exemption Certificate
<b>POA</b>	Price On Application
<b>RORO</b>	Roll-on, Roll-off
<b>Secondary Port Areas</b>	Refers to the ports of Coles Bay, Port Arthur and/or Grassy/Naracoopa King Island
<b>TEU</b>	Twenty foot (20') Equivalent Units (6.1 metres)
<b>UTV</b>	Utility Task Vehicle
<b>VTS</b>	TasPorts Vessel Traffic Services Centre (VTS Authority in accordance with the provisions of Marine Order 64)



# CONTENTS

## 01 WHARFAGE

## 04 PILOTAGE

## 07 TONNAGE

## 08 LAY-UP

## 09 TOWAGE

- 09 Rates of Hire
- 09 Additional Period of Towage
- 10 Relocation Charges
- 10 General Charges

## 11 BASS STRAIT HIGH FREQUENCY SHIPPERS

- 11 Wharfage
- 11 Tonnage

## 12 CRUISE VESSELS

- 12 Wharfage Infrastructure Levy
- 12 Pilotage
- 13 Tonnage
- 13 Berth Services and Occupancy
- 14 Aborted Calls, Cancellations and Late Change Charges

## 15 OTHER CHARGES - EQUIPMENT

- 15 Portable Buildings
- 15 Equipment and Plant Hire
- 16 King Island Only
- 16 Floating Plant Hire (wet hire only)
- 17 Barge Hire (dry hire only)

## 18 OTHER CHARGES - ELECTRICITY

## 19 OTHER SERVICES & FEES

- 19 Stevedoring
- 19 Receival and Despatch (Port of Grassy)
- 19 Casual Storage
- 19 Berth Set Up for Special Arrangements
- 19 Wharf Clean Up
- 19 Fresh Water
- 20 Labour including Traffic Management (Per Officer)
- 20 Weighbridge
- 20 Quarantine - available Bell Bay, Burnie and Hobart
- 20 Non-cargo Liquid Transfer
- 20 Administration
- 21 Parking Permits - Hobart
- 21 Oil Spill Clean Up
- 21 Other

## 22 SECURITY

## 23 SLIPWAYS

- 23 Slipway Charges
- 24 Labour Rates
- 24 Other Charges - Domain Slip

## 25 DEVONPORT AIRPORT - AERONAUTICAL

- 25 Landing Fees
- 25 Aircraft Parking Fees
- 26 Aircraft Storage Fees
- 26 Ground Handling Equipment (e.g. Cargo Loading/Discharging)

## 27 PORT AND OFFICE LOCATIONS

Front cover: Port of Hobart



# WHARFAGE

Wharfage charges apply to all cargoes, loaded on or discharged from vessels or between vessels, while alongside TasPorts' berths, and are payable at the default rate specified for the relevant cargo or by the rate per tonne, cubic metre, or kilolitre specified for the relevant cargo, (whichever is the greater).

All cargo is to be declared by manifest by voyage/trip and must note all units of measure specified for all relevant cargo in the table below.

Manifests to be forwarded to [wharfage@tasports.com.au](mailto:wharfage@tasports.com.au) within two (2) business days of vessel departure unless otherwise agreed by the parties.

Specialised project/heavy lift cargo may require price on application.

Wharfage charges appearing in this section do not apply to Bass Strait High Frequency Shippers. Please refer to the section on Bass Strait High Frequency Shippers for relevant wharfage charges.

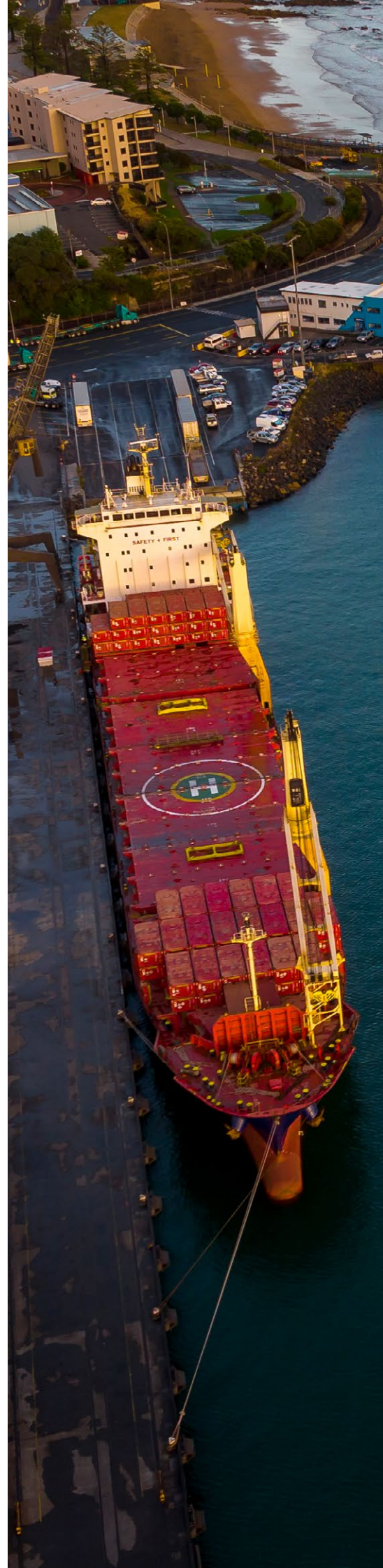
**\$ EX GST**

CARGO		
General cargo (non containerised)	per tonne or cubic metre (minimum charge is one tonne or cubic metre or linear metre whichever is greater)	5.12
Bulk cargo (wet or dry)	per tonne/kilolitre /cubic metre	3.54
Petroleum products	per kilolitre/tonne	4.96
Hydrogen derived fuel products	per kilolitre/tonne	4.96
Liquid bulk - Fire Safety Infrastructure Levy	per kilolitre	1.22
Hydrogen derived fuel products - Safety Infrastructure Levy	per kilolitre/tonne	POA

## NOTE:

If bunkering, refer Non Cargo Liquid Transfer (bunkering & waste) charges page 19 Other Services & Fees

CONTAINERISED CARGO*		
Full containers (excluding King and Flinders islands)	per TEU*	101.17
Full containers (King and Flinders islands only)	per TEU*	125.63
Empty containers	per TEU*	28.85



# WHARFAGE

\$ EX GST

## TRAILERS UNDER LOAD (EXCLUDING PRIME MOVERS)

20 foot (6.1 metres) (excluding King and Flinders islands)	each	101.17
40 foot (12.2 metres) (excluding King and Flinders islands)	each	202.34
20 foot (6.1 metres) (King and Flinders islands only)	each	125.63
40 foot (12.2 metres) (King and Flinders islands only)	each	251.26
Non standard length trailers (greater than 5 tonne)	per linear metre	34.47

## TRAILERS EMPTY (EXCLUDING PRIME MOVERS)

Empty trailer	per linear metre	14.31
---------------	------------------	-------

## LIVESTOCK IN TRAILER UNITS

20 foot (6.1 metres)	single and multi deck, per unit	107.84
40 foot (12.2 metres)	single and multi deck, per unit	215.68
Empty livestock trailer return	per linear metre	7.04

## LIVESTOCK (NOT IN TRAILERS)

Small animals (calves less than 9 months old, sheep, rams and pigs)	per head	1.18
Large animals (cattle greater than 9 months old and horses)	per head	5.00

## STOCK FACILITY LEVY (APPLIES TO LIVESTOCK THAT UTILISE TASPORTS' LIVESTOCK YARDS ONLY)

Small animals (e.g. calves less than 9 months old, sheep, rams and pigs)	per head	0.66
Large animals (e.g. cattle greater than 9 months old and horses)	per head	1.30

### NOTE:

The customer must declare on the manifest livestock numbers that go through TasPorts' livestock yards at the ports of Grassy and Lady Barron and the livestock numbers that do not go through TasPorts' livestock yards.



# WHARFAGE

\$ EX GST

## PRIME MOVERS, HEAVY RIGID TRUCKS, BUS AND WHEELED FARM EQUIPMENT<sup>†</sup> (<2.5M WIDE)

Prime mover and / or loaded trailer, machinery and equipment	per linear metre	34.35
--	------------------	-------

## VEHICLES, CARAVANS AND TRAILERS

Motor vehicles up to 5 tonne and 6.5m in length	each	51.85
Motor bikes (incl. bikes and All Terrain Vehicles)	each	16.60
Motor homes, transit vans, commuter buses, caravans, recreational boats, horse floats and trailers (up to 5 tonnes) <sup>‡</sup>	per linear metre	14.14

## BULK FUEL

Fuel in drums	per 200 litres	2.87
---------------	----------------	------

## TASPORTS INFRASTRUCTURE LEVY (Devonport 5 West RORO Only)

Devonport RORO Ramp Levy	per linear metre (loading/discharging)	7.29
--------------------------	--	------

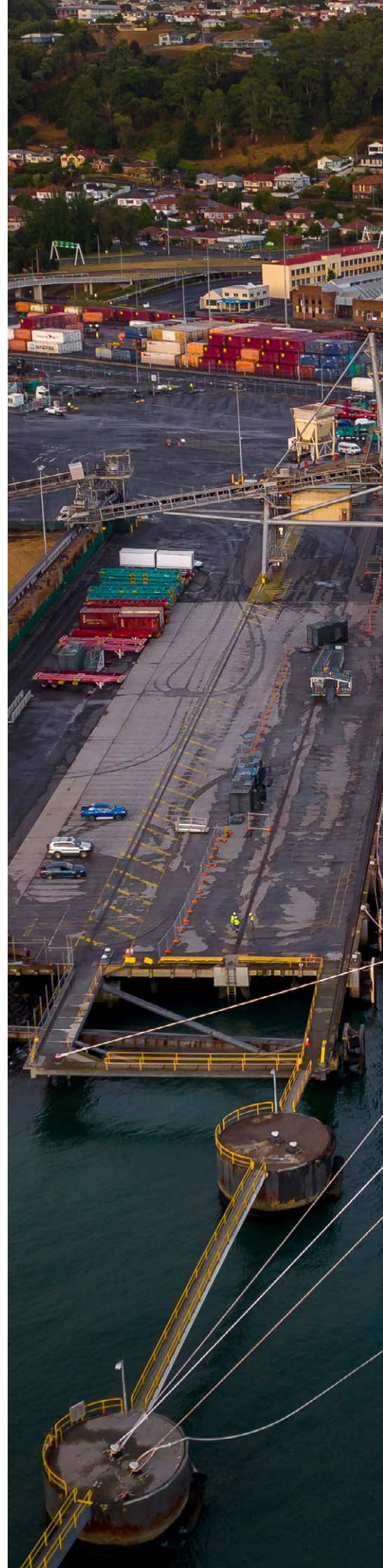
## ADDITIONAL ADMINISTRATION LEVY

Administration fee (to be issued to the party forwarding the manifest to TasPorts)		
(e.g. late manifest and/or manifests requiring significant changes resulting in the need for TasPorts to re-invoice. The application of the additional administration levy, is at the discretion of TasPorts taking into account reprocessing time)		125

### NOTES:

- \* TEU = Twenty foot (20') equivalent units (6.1 metres). A forty foot (40') (12.2 metres) container will constitute 2 x TEU for charging purposes. TEU's "out of gauge" will be charged at the general cargo rate. Any cargo not otherwise classified will be charged at the general cargo rate.
- † Prime mover/empty trailer combination to be treated as separate units i.e prime mover and empty trailers. Overwidth units to be considered as General Cargo. Dimensions to be provided.
- ‡ Includes towing vehicle length.

TasPorts charges wharfage fees for TasPorts-owned ports and berths.





# PILOTAGE

A Pilot is required for all vessels exceeding 35 metres in length overall (LOA) whilst in a port pilotage area, unless an Exempt Master is in charge of the vessel.\*

Pilotage charges are comprised of a fixed charge plus a charge per Gross Registered Tonnage (GRT) as recorded on the relevant vessel's certificate, covering pilot services and pilot launch at the ports of Bell Bay, Burnie, Devonport and Hobart. The GRT charge will only apply to vessels greater than 9,999 GRT.

Pilotage charges appearing on this and the following two pages do not apply to cruise vessels. Please refer to the section on cruise vessels for relevant pilotage charges.

In addition to the standard pilotage charges referred to above, pilotage transfers may be applicable as set out below.

After 2200 hours that precedes a scheduled movement, the scheduled movement cannot be brought forward between the hours of 2200-0600.

Please also refer to TasPorts' Berthing Priority Policies and Procedures on the **TasPorts website**. This document includes a Double Berthing Policy, in which TasPorts may offer an incentive to shipping operators to consider a 'Double Berthing' option.

**\$ EX GST**

## PILOTAGE ALL VESSELS (EXCLUDING CRUISE SHIPS)\*\*

Fixed charge (all vessels)	per pilotage	2,372
GRT charge (to vessels with GRT greater than 9,999 GRT)	per pilotage per GRT	0.146

## INTER-BERTH TRANSFERS/SHIFTS

Transfer charges apply to all movements of vessels over 35 metres in length within a port pilotage area	per shift	2,372
---	-----------	-------

## PILOTAGE TRANSFERS (EXCLUDING CRUISE SHIPS)

Charges for over carry or transfer of pilots will be priced on application		POA
Pilot transfer for Secondary Port Areas and Port Latta by launch	per hour	731



# PILOTAGE

\$ EX GST

## PILOTAGE EXEMPTION CERTIFICATE AND RENEWAL CHARGE

The charges apply to all Masters that apply and successfully complete the requirements to become an Exempt Master for a particular zone.

Initial Pilotage Exemption Certificate	per certificate per zone	765
Renewal of Pilotage Exemption Certificate	per renewal per zone	383
Renewal of Pilotage Exemption Certificate - low risk vessel e.g. super yachts	per renewal per zone	POA
Pilotage Master Audit Charge†	per "check pilotage trip"	‡

\$ EX GST

## PILOTAGE CANCELLATION CHARGE - PORT CALL

A cancellation charge applies when a vessel movement is cancelled within six (6) hours of the time for which a Pilot has been ordered at a port, but prior to a Pilot commencing transfer to a vessel

982

## PILOTAGE LATE CHANGE FEE

A late change fee will be applied where a vessel movement is changed within six (6) hours of the time for which a Pilot has been ordered at a port, but prior to a Pilot commencing transfer to a vessel

982

## ABORTED PILOTAGE - PORT CALL

An aborted charge applies when a vessel movement is aborted after the Pilot has boarded or commenced transfer to vessel. This includes movements that have been aborted due to extreme adverse weather events or for other safety reasons

‡







# PILOTAGE

\$ EX GST

## MISCELLANEOUS MARINE OPERATIONS PROJECTS (e.g. aquaculture projects)

Customised quotations can be developed for projects and work that requires marine operations teams (e.g. Pilots, Tugs etc). Quotations will take into consideration the cost of the resource, use of any assets and any other ancillary costs e.g. including but not limited to accommodation and travel.

POA

### NOTES:

- \* There are also limited exemptions in the relevant regulations for naval, military and air force vessels (except in relation to Zone B) and any other specified vessel or class of vessels determined by MAST in writing to be exempt.
- \*\* A pilotage exemption run or renewal check run is considered a full pilotage job.
- † A Pilotage Master Audit Charge applies when an Exempt Master requires a "Check Pilot" to undertake onboard practical assessment. Pilotage Master Audits are for authorised movements only which must be booked in accordance with normal booking procedures. An applicant attempting to obtain an initial pilotage exemption or a renewal of PEC (including low risk vessels) pays the Pilotage Master Audit charge.
- ‡ Full Pilotage charge to be applied (fixed and GRT charge).

# TONNAGE

Vessel Tonnage charges apply to all vessels exceeding 35 metres in length overall (LOA) that enter TasPorts' port pilotage areas (including shipping channels). Charges apply for the first day or part thereof with a reduced charge for each subsequent 24 hour period or part thereof – except for Port Latta, where a different tonnage charge applies by reason of it being a privately operated port and the different costs incurred by TasPorts at that port.

The Vessel Tonnage charge covers those TasPorts' responsibilities under the Deed of Agreement (the Deed) with Marine and Safety Tasmania and the Crown (Environmental Protection Authority), including provision of channel related services. These include responsibilities related to regulatory functions under the Deed including but not limited to Harbour Master responsibilities, all navigation related matters including navigation aids and provision of channels (including maintenance dredging), emergency response, environmental protection, port traffic control services, communications and port security issues.

Please also refer to TasPorts' Berthing Priority Policies and Procedures on the [TasPorts website](#). This document includes a Double Berthing Policy, in which TasPorts may offer an incentive to shipping operators to consider a 'Double Berthing' option.

Tonnage charges appearing in this section do not apply to Bass Strait High Frequency Shippers. Please refer to the section on Bass Strait High Frequency Shippers for relevant tonnage charges.

**\$ EX GST**

## STATEWIDE (EXCLUDING CRUISE SHIPS & PORT LATTA)\* ‡

For the first day (or part thereof) – all vessels > 90m LOA	per GRT	0.750
For the first day (or part thereof) – all vessels ≤ 90m LOA	per GRT	0.408
For each subsequent day (or part thereof) – all vessels	per GRT	0.189

## PORT LATTA†

All vessels > 35m LOA	per GRT per visit	0.168
-----------------------	-------------------	-------

### NOTES:

- \* Time period commences when vessel is alongside. For vessels only calling at anchor, only first day charge applies and time period commences when vessel reaches inner anchorage position within a port pilotage area. TasPorts' Statewide tonnage charge does not apply to Port Latta, by reason of it being a privately operated port and the different costs incurred by TasPorts at that port. Additional equipment, plant and labour requested for vessel operations that are not directly related to the berthing of the vessel will incur charges at the applicable rate. Security charges will be charged as per the Security Charges section.
- ‡ If a Lay-up Fee is applied (e.g. when a vessel is alongside but not loading/discharging cargo), the Tonnage Fee applies for the first day but is not applicable for any subsequent days. In the case of vessels loading/discharging cargo, Tonnage Fees apply for each 24 hour period or part thereof that a vessel is loading/discharging cargo. If the vessel is still alongside once loading/discharging has completed then Lay-up fees apply.
- † Applies upon vessel entry into the Port Pilotage Area for Port Latta. TasPorts' tonnage charge for Port Latta is separate and additional to any charges by or on behalf of the private port operator. The commencement date for this charge at Port Latta is 1 July 2024.



# LAY-UP

Use of TasPorts' berths for lay-up is at the discretion of TasPorts. Lay-up use includes:

- mooring at a berth by vessels not intending to transfer cargo
- mooring at a berth by vessels after completion of cargo operations

Payment of lay-up charge does not provide a guarantee of, or priority use of, a berth, mooring or wharf except to the extent granted by TasPorts. Lay-ups for 14 days or less are by prior arrangement and upon application through TasPorts' booking system. Tonnage (First Day) is payable on arrival to a berth for vessels exceeding 35 metres in length overall. Berthing enquiries for vessels not exceeding 35m LOA should be directed to [property@tasports.com.au](mailto:property@tasports.com.au).

**\$ EX GST**

## VESSELS (CARGO) LOA > 35M<sup>†</sup>

Lay-up Fee	per GRT / per day	0.189
Lay-up greater than 14 days	subject to availability	POA

## VESSELS (NON CARGO) LOA > 35M<sup>†</sup>

Lay-up Fee	per GRT / per day	0.189
Lay-up Fee (minimum daily charge)	first day and subsequent days	1,222
Lay-up greater than 14 days	subject to availability	POA

**FEE PER DAY  
(\$ EX GST)**

## SUPER YACHTS (≤ 35M LOA)

Lay-up Fee	POA
------------	-----

**FEE PER DAY  
(\$ EX GST)**

**FEE PER WEEK  
(\$ EX GST)**

## RECREATIONAL VESSELS EXCLUDING SUPER YACHTS\*\*

Vessels up to 15 metres	70	170
Vessels - 16 to 20 metres	100	320
Vessels - 21 to 35 metres	132	501

**FEE PER ANNUM  
(\$ EX GST)**

## KINGS PIER MARINA BERTHS

Berth - 10 metres	6,646
Berth - 12 metres	8,584
Berth - 14 metres	10,854
Berth - 15 metres	11,741
Berth - 16+ metres	POA

**\$ EX GST**

## FISHING VESSELS (≤ 35M LOA)

Visiting fishing vessels	Per 24 hours or part thereof	106
Annual fishing vessel registration		POA

### NOTES:

<sup>†</sup> If a Lay-up Fee is applied (e.g. when a vessel is alongside but not loading/discharging cargo), the Tonnage Fee applies for vessels exceeding 35m LOA for the first day but is not applicable for any subsequent days. In the case of vessels loading/discharging cargo, Tonnage Fees apply for each 24 hour period or part thereof that a vessel is loading/discharging cargo. If the vessel is still alongside once loading/discharging has completed then Lay-up fees apply. TasPorts' lay-up charges apply to TasPorts-owned berths. Inner anchorage within port pilotage areas greater than 24 hours will be POA.

\*\* No fee charged for recreational vessels excluding super yachts visiting King Island, Flinders Island, and Stanley.

# TOWAGE

TasPorts operates harbour tugs, which are available to provide towage services to the ports located at Bell Bay, Burnie, Devonport, Hobart, Port Latta and Stanley. TasPorts Towage offers a range of services, including harbour towage, emergency towage and contract towage for specialist jobs.

Refer to **TasPorts' website** for TasPorts' Reference Documents and Forms (including Standard Conditions for Towage and Other Services) and the Ports Procedures Manual for further information, including in relation to tug requirements.

Please also refer to TasPorts' Berthing Priority Policies and Procedures on the **TasPorts website**. This document includes a Double Berthing Policy, in which TasPorts may offer an incentive to shipping operators to consider a 'Double Berthing' option.

## RATES OF HIRE

Hire Rate per tug is calculated as per below Towage tables (Base Rate plus GRT Rate) for handling a vessel within a three (3) nautical mile radius of the relevant berth. For the ports of Burnie, Devonport, Port Latta and Stanley, this charge is for the first 2 hours. For the ports of Bell Bay and Hobart, this charge is for the first 2.5 hours.

Hire Rate period of towage commences when a tug begins service.

Tug requirements for the next day's shipping must be confirmed with TasPorts VTS by 1600 hrs.

After 2200 hours that precedes a scheduled movement, the scheduled movement cannot be brought forward between the hours of 2200-0600.

**\$ EX GST**

<b>HIRE RATE (PER TUG)</b>	
Base Rate	1,556
GRT Rate	0.523
Minimum Hire Rate	6,731
Maximum Hire Rate	14,265

## ADDITIONAL PERIOD OF TOWAGE

Additional period of towage Hire Rates will be charged at 25% of the applicable Hire Rate per tug, per 60 minutes, or part thereof, once the initial Hire Rate period has expired.

### **FUEL SURCHARGE**

A fuel surcharge is charged per tug engaged. This surcharge shall be adjusted monthly and is available on request.





# TOWAGE

## RELOCATION CHARGES

If an operational requirement requires a tug with specialist capability of specific bollard pull, a relocation charge will apply if that vessel has to be brought in from another port. Relocations to ports not listed in the below table will be priced on application.

**\$ EX GST**

RELOCATION CHARGES (TO/FROM PORT)				
	STANLEY/PORT LATTA	BURNIE	BELL BAY	DEVONPORT
DEVONPORT	6,523	3,272	3,941	-
BELL BAY	10,106	6,557	-	3,941
BURNIE	3,904	-	6,557	3,272

## GENERAL CHARGES

**\$ EX GST**

<b>Vessels not under power (Dead Ship)</b>	An additional 50% to the applicable rate will be charged	
<b>Escort</b>	100% of the applicable rate per hour	
<b>Cancellation or deferment</b>	A Cancellation Fee (per tug) will be charged when towage is cancelled or deferred within six (6) hours of the time for which a tug service has been ordered	3,900
<b>Late order for towage</b>	Where tugs are ordered with less than six (6) hours notice, a Late Order Fee (per tug) will be charged	3,900
<b>Aborted towage</b>	An Aborted Towage Fee applies when a tug service is aborted after the tug(s) has commenced transit to vessel. This includes a tug service that has been aborted due to extreme adverse weather events or for other safety reasons.	100% of the applicable Hire Rate per tug

### STANDBY AND/OR PUSHING UP THE VESSEL AT BERTH

Where tugs are ordered to stand by to assist a vessel (e.g. pushing up during severe weather), the following charges per tug will apply:

<b>Assisting the vessel (crew on standby on board the tug at the tug berth or tug in attendance standing by the vessel)</b>	100% of the applicable Hire Rate
---	----------------------------------

### SUNDRY AND SPECIAL SERVICES

Charges for sundry or special services not otherwise covered above will be priced on application.

# BASS STRAIT HIGH FREQUENCY SHIPPERS

The below wharfage and tonnage rates apply to Bass Strait High Frequency Shippers only.

This classification refers to customers who operate frequent scheduled turn around sailings at least five (5) days per week, to/from Tasmania and a mainland Australian state.

## WHARFAGE

		<b>\$ EX GST</b>
<b>Full TEU*</b>	per TEU	64.13
<b>Empty TEU</b>	per TEU	0.00
<b>Vehicles</b>	each	16.85

## TONNAGE †

		<b>\$ EX GST</b>
<b>All vessels &gt;35m LOA</b>	per vessel GRT per sailing	0.202

### NOTES:

\* TEU = Twenty foot (20') equivalent units (6.1 metres). A forty foot (40') (12.2 metres) container will constitute 2 × TEU for charging purposes. Non-standard length items are calculated on a pro rata basis (i.e. total length of all units shipped, divided by 6.1 metres).

† Tonnage charge applies on vessel entry into Tasports' Port Pilotage Areas. Further information about the Tonnage charge can be viewed on page seven of the Schedule of Port Charges.



# CRUISE VESSELS

## WHARFAGE INFRASTRUCTURE LEVY - CRUISE VESSELS $\geq 70,000$ GRT

A Wharfage Infrastructure Levy will apply for all large cruise vessels of 70,000 Gross Registered Tonnage (GRT), or greater. This levy applies for port calls only and charged per GRT per visit, at the ports of Bell Bay, Burnie, Devonport and Hobart.

**\$ EX GST**

WHARFAGE INFRASTRUCTURE LEVY CRUISE VESSELS $\geq 70,000$ GRT		
Wharfage Infrastructure Levy	per GRT	0.286
Wharfage Infrastructure Levy	CAP	34,202

## PILOTAGE

A Pilot is required for all vessels exceeding 35 metres in length overall (LOA) whilst in a port pilotage area, unless an Exempt Master is in charge of the vessel. Pilotage charges comprise a fixed charge plus a charge per gross registered tonnage (GRT), covering pilot services and pilot launch at the ports of Bell Bay, Burnie, Devonport and Hobart. The GRT charge will only apply to vessels greater than 9,999 GRT. For Secondary Port Areas the standard pilotage charges apply as below and pilot transfer charges will apply.

**\$ EX GST**

PILOTAGE			
Fixed charge all cruise vessels		per pilotage	2,372
GRT charge cruise vessels	>9,999 GRT	per pilotage per GRT	0.146
EXTENDED PILOTAGE - SECONDARY PORT AREAS ONLY - EXPEDITION CRUISE			
In addition to the fixed pilotage charge, an hourly rate will apply where a Pilot is attending to a vessel (including transfer to/from) for longer than four (4) hours in duration	$\leq 9,999$ GRT	per hour	394

### PILOT TRANSFERS SECONDARY PORT AREAS\*

Fees associated with over carry or transfer of a pilot to a Secondary Port Area will be charged as follows:

Pilot launch	Ex/To Port Arthur	per transfer	4,648
	Ex/To Coles Bay	per transfer	9,239
Plane	Ex/To Sydney	per transfer	478
	Ex/To Melbourne	per transfer	359
Road	Ex/To Port Arthur $\leq 9,999$ GRT	per transfer	1,244
	Ex/To Port Arthur $> 9,999$ GRT	per transfer	456
	Ex/To Coles Bay $\leq 9,999$ GRT	per transfer	1,872
	Ex/To Coles Bay $> 9,999$ GRT	per transfer	690

### NOTES:

\* Pilotage and transfer charges for other Secondary Port Areas not specified above will be charged on a POA basis. Method of transfer will be determined at TasPorts' discretion and may not be advised until 24 hours prior to scheduled call.



# CRUISE VESSELS

## TONNAGE\*

Vessel Tonnage charges apply to all vessels exceeding 35 metres in length overall (LOA). Charges apply for the first day or part thereof with a reduced charge for each subsequent 24 hour period or part thereof. Further information about the Tonnage charge can be viewed on page seven of the Schedule of Port Charges.

**\$ EX GST**

### BELL BAY, BURNIE, DEVONPORT AND HOBART

For the first day (or part thereof)	per GRT	0.399
For each subsequent day (or part thereof)	per GRT	0.189

#### NOTES:

- \* Time period commences when vessel is alongside. For vessels only calling at Bell Bay's inner anchorage position, only first day tonnage charges apply.

## BERTH SERVICES AND OCCUPANCY†

A flat fee Berth Service and Occupancy charge applies for all cruise vessels calling at Hobart, Burnie, Devonport and Bell Bay. The charge covers the use of the berth, terminals, services to support berth set-up and passenger disembarkation/embarkation including gangways (and equipment to position gangways excluding any third party services such as crane hire), Landside Restricted Zone fencing, portable buildings to support regulated vessel arrangements, utility connections/disconnections and associated labour.

**\$ EX GST**

### BELL BAY, BURNIE, DEVONPORT AND HOBART

Cruise vessels	>9,999 GRT	per visit	13,505
Expedition cruise vessels	≤9,999 GRT	per visit	5,111

#### NOTES:

- † Additional equipment, plant and labour requested for vessel operations that are not directly related to the berthing of the vessel will incur charges at the applicable rate. Security charges will be charged as per the Security Charges section.



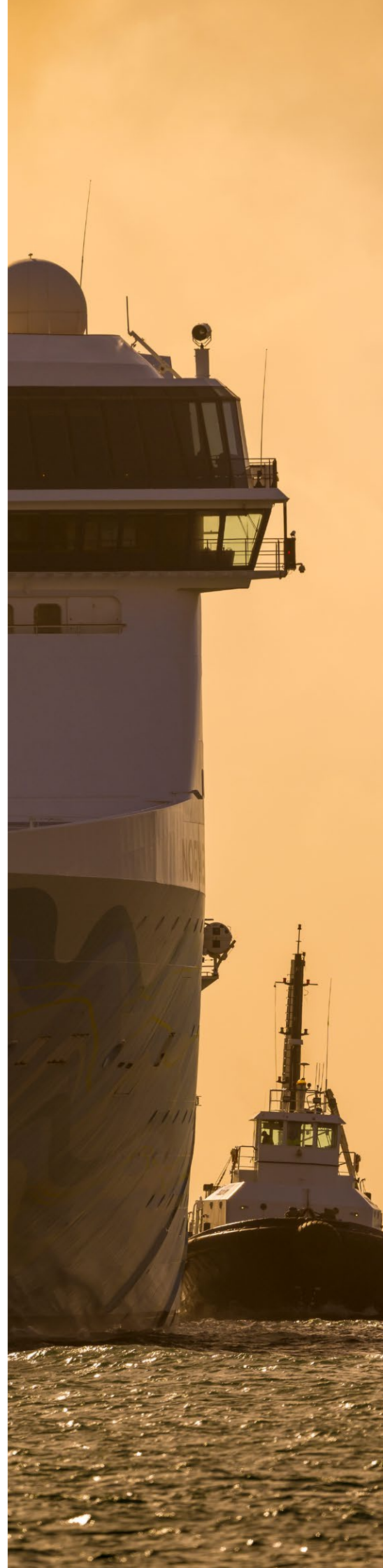
# CRUISE VESSELS

## ABORTED CALLS, CANCELLATIONS AND LATE CHANGE CHARGES

\$ EX GST

ABORTED CALLS, CANCELLATIONS AND LATE CHANGE (PILOTAGE) CHARGES		
Pilotage cancellation charge - port call	A cancellation charge applies when a vessel movement is cancelled within six (6) hours of the time for which a Pilot has been ordered at a port, but prior to a Pilot commencing transfer to a vessel	982
Aborted pilotage charge - port call	A charge applies when a vessel movement is aborted after the Pilot has boarded or commenced transfer to the vessel. This includes movements that have been aborted due to extreme adverse weather events or for other safety reasons	2,372
Aborted pilotage cancellation charge - Secondary Port Areas	An aborted charge of 50% of the applicable pilotage rate will be charged when a vessel call at a Secondary Port Area is aborted or cancelled once the Pilot has departed from their home port	
Pilotage late change fee	A late charge fee will be applied where a vessel movement is changed within six (6) hours of the time for which a Pilot has been ordered at a port, but prior to a Pilot commencing transfer to a vessel	982

In addition to the above, charges may apply as per *TasPorts' Cruise Ship Booking Cancellation Policy* for calls cancelled within 22 months prior to the booked call. This policy is available on the [TasPorts website](#).



# OTHER CHARGES - EQUIPMENT

\$ EX GST

PORTABLE BUILDINGS		
Portable Amenities Unit	per 24 hour period or part thereof	399
Portable Office/Security - inclusive of power where available	per 24 hour period or part thereof	147
EQUIPMENT AND PLANT HIRE		
Ships Gangway Hire (Gangway Only) ≤ 10m	per 24 hour period or part thereof	174
Ships Gangway Hire (Gangway Only) > 10m	per 24 hour period or part thereof	279
Passenger Boarding System including 14m gangway (cruise ships)	per 24 hour period or part thereof	696
Bulk Commodity Hopper	per tonne or cubic metre (whichever is greater)	0.61
Dust Collector (including power)	per 24 hour period or part thereof	2,333
Charges for the transport, placing and removing of equipment will be in accordance with the prevailing mechanical equipment and labour hire rates, as specified in this Schedule.		
The following rates apply if the equipment is available (wet hire only). Hire charge rates for the equipment listed during normal business hours of 0730-1630 are as follows. Out of hours rates available upon request.		POA*
Crane hire (10 tonne or less) Minimum of four (4) hour hire on King Island	per hour or part thereof	200
Crane hire (above 10 tonnes) Minimum of four (4) hour hire on King Island	per hour or part thereof	244
Forklift hire (10 tonnes and above)	per hour or part thereof	200
Forklift hire (5-9 tonnes)	per hour or part thereof	115
Telehandler	per hour or part thereof	166
Elevated work platform	per hour or part thereof	360
Pressure cleaner	per 24 hour period or part thereof	212
Branson tractor	per hour or part thereof	101
Sweeper	per hour or part thereof	174
Tip truck	per hour or part thereof	212
Medium size portable fender hire	per 24 hour period or part thereof & other charges if applicable <sup>†</sup>	182
Large size portable fender hire	per 24 hour period or part thereof & other charges if applicable <sup>†</sup>	260
Safety cage	per 24 hour period or part thereof	105
Remotely Operated Vehicle	equipment per hour & labour charge <sup>‡</sup>	115



# OTHER CHARGES - EQUIPMENT

**\$ EX GST**

## KING ISLAND ONLY

The following rates apply if the equipment is available (wet hire only). Hire charge rates for the equipment listed during normal business hours of 0730-1630 are as follows. The Port of Grassy, King Island, is closed on Picnic Day, Easter Good Friday, ANZAC Day and Christmas Day. Out of hours equipment rates apply for these port closed days and are available on request.

Prime mover	per hour or part thereof	155
20 ft and 40 ft side loader (trailer only)	per hour or part thereof	142
CAT wheel loader	per hour or part thereof	142
Skel trailer	per 24 hour period or part thereof	47
Terberg	per hour of part thereof	168
CAT Track Skid Steer and attachments	per hour of part thereof	140
Fire Fighting Pump - dry hire (dust suppressions etc.)	per hour of part thereof	45
Transport Dangerous Goods surcharge (eg. fuel, gas and explosives)	per container/ISO (empty/full)	112

**\$ EX GST**

## FLOATING PLANT HIRE (WET HIRE ONLY)

Launch hire (e.g. mooring line and life boat drills etc.)	per two (2) hour period	969
Pilot launch hire	per hour or part thereof	1,292
Work Punt	per hour period or part thereof (4 hour minimum)	174
Work Boat	per hour period or part thereof (4 hour minimum)	404
Landing barge <i>Kulanda</i>	per eight (8) hour day or part thereof (8 hour minimum)	7,026

Cancellation Fee will be charged when hire of Launch, Work Punt and/or Work Boat is cancelled within six (6) hours of the scheduled time for which Launch, Work Punt and/or Work Boat has been ordered	50% of the applicable Hire Rate
--	---------------------------------

Late Change Fee will be charged when hire of Launch, Work Punt and/or Work Boat is changed within six (6) hours of the scheduled time for which Launch, Work Punt and/or Work Boat has been ordered	50% of the applicable Hire Rate
---	---------------------------------

An Aborted Fee applies when a Launch, Work Punt and/or Work Boat hire is aborted after hire has commenced. This includes hire that has been aborted due to extreme adverse weather events or for other safety reasons	100% of the applicable Hire Rate
---	----------------------------------

A cancellation needs to be provided within five (5) working days to avoid the minimum charge being applied to Landing Barge *Kulanda*

## FLOATING PLANT HIRE TERMS AND CONDITIONS

After 2200 hours that precedes a scheduled movement, the scheduled movement cannot be brought forward between the hours of 2200-0600.

# OTHER CHARGES - EQUIPMENT

\$ EX GST

## BARGE HIRE (DRY HIRE ONLY)#

Drag-line Barge <i>TB Eldon (North)</i>	per 24 hour period or part thereof	980
Pile-driving Barge <i>TB Rufus</i>	per 8 hour period or part thereof	980
PDC60 Barge <i>TB Ossa (South)</i>	per 24 hour period or part thereof	980
<i>Massif Barge</i>	per 24 hour period or part thereof	1300
Barge mobilisation fee inclusive of standard crew, overtime rates apply.		POA
Labour	As set out in the Other Services & Fees section of this Schedule of Port Charges	

## BARGE HIRE TERMS AND CONDITIONS

Prices are only a guide.

Contact TasPorts for a formal quote outlining your requirements.

## NOTES:

- \* If contractor call out required, contractor charges will apply plus 10%.
- † If install, removal, transport and/or repairs to any damage is required these will be on-charged to the customer at cost plus 10%.
- ‡ See other services labour.
- # Hire rates may vary subject to length of hire and location.

Equipment may not be available at all ports. Please contact TasPorts regarding equipment availability.



# OTHER CHARGES - ELECTRICITY

\$ EX GST

## ELECTRICAL SERVICES - SHIP RELATED CONNECTIONS/ DISCONNECTIONS AND ISOLATIONS

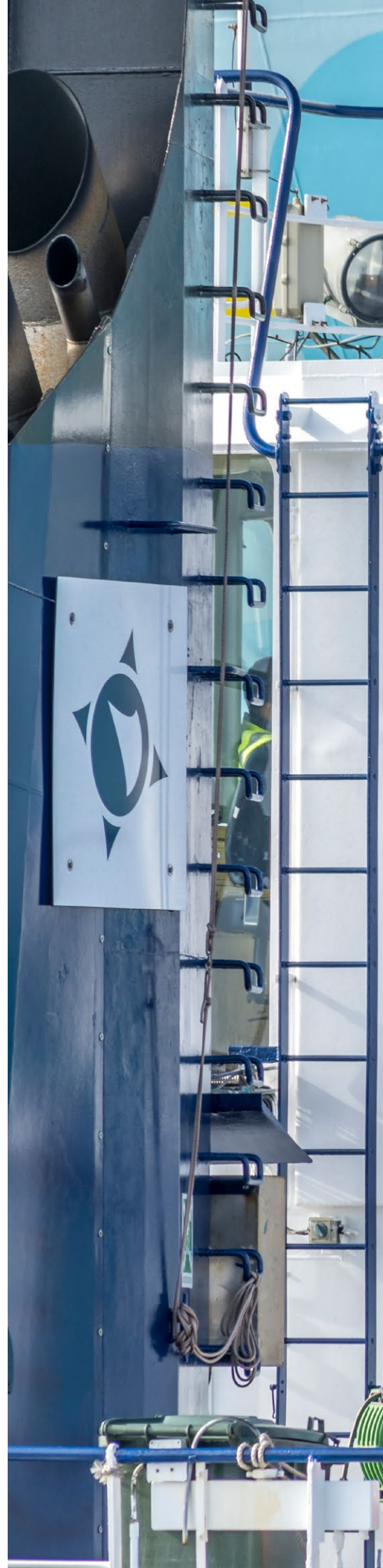
In hours 0730 - 1630 Monday - Friday	per connection/disconnection or isolation	202
Out of hours call out	per connection/disconnection or isolation	771

## ELECTRICITY

Metered supply	per kilowatt hour	0.44
----------------	-------------------	------

## Unmetered supply (per connection)

Single phase	per 24 hour or part thereof	26.12
Three phase	per 24 hour or part thereof	81.76
Refrigerated containers	per 24 hour or part thereof	69.44



# OTHER SERVICES & FEES

\$ EX GST

<b>STEVEDORING</b>		
<b>Stevedoring Licence fees</b>		
A stevedoring operator must be licensed by TasPorts to operate or undertake cargo handling activities within TasPorts' facilities. Days to be applied to be determined on application depending on port storage and stevedoring arrangements.	per 24 hour period or part thereof	413
<b>Stevedoring Charges (Flinders Island)</b>		
Stevedoring/management fee	per seven (7) hour period per five (5) hour period extra hours over and above seven (7), per hour	974 555 139
<b>Stevedoring Charges (Port of Grassy)</b>		
Stevedoring – fixed (including, two persons, management fee + equipment)	per seven (7) hour period per five (5) hour period	3,415 1,952
Stevedore (one person) – no stevedoring equipment required	per person per seven (7) hour period per person per five (5) hour period	834 476
Stevedoring – extra hours	per person per hour	119
Additional container forklift (not including operator)	per hour	157
Terberg (not including operator)	per hour	107
The Port of Grassy, King Island, is closed on Picnic Day, Easter Good Friday, ANZAC Day and Christmas Day. Additional stevedoring charges apply for these port closed days and are available on request.		
<b>RECEIVAL AND DESPATCH (PORT OF GRASSY)</b>		
Between 0730 and 1600, Monday to Friday (includes operator and forklift)	per 15 minutes or per forklift lift	70
Receival and despatch (with no equipment required)	per 15 minutes	32
<b>CASUAL STORAGE</b>		
Casual storage	per 100m <sup>2</sup> per week or part thereof	150
Casual storage – undercover	per 100m <sup>2</sup> per week or part thereof	280
<b>BERTH SET UP FOR SPECIAL ARRANGEMENTS</b>		
Dangerous Goods Class 1 – Berth set up for explosive vessels		401
<b>WHARF CLEAN UP</b>		
Per plant and equipment hire if utilised. If contractor call out required, contractor charges will apply plus 10%.	per sailing	264
<b>FRESH WATER</b>		
Connection/disconnection fee	per connection/disconnection	202
Supply	per kilolitre	2.28



# OTHER SERVICES & FEES

\$ EX GST

<b>LABOUR INCLUDING TRAFFIC MANAGEMENT (PER OFFICER)*</b>		
In hours 0730 – 1630 Monday – Friday	per hour or part thereof	101
Out of hours Monday – Friday	per hour or part thereof	202
Weekends and Public Holidays	minimum charge plus per hour or part thereof	521 202
<b>WEIGHBRIDGE</b>		
Fee	per weigh	12.70
<b>QUARANTINE – AVAILABLE BELL BAY, BURNIE AND HOBART</b>		
Fumigations using recapture equipment (Bell Bay) <sup>†</sup>	per container	344
Quarantine fumigation pad hire (first day)	per day or part thereof	399
Quarantine fumigation pad hire (subsequent days)	per day or part thereof	234
Washbay under biosecurity directions (where available and where a pre approved arrangement with TasPorts is not in place)	per day or part thereof	519
Washbay (general purpose as classified by TasPorts)	per day or part thereof	404
<b>NON-CARGO LIQUID TRANSFER</b>		
Fuel bunkering and waste (permit required)	per litre	0.0062
Fire watch person petroleum vessels	minimum charge up to four (4) hours	880
	plus per hour or part thereof	220
Fuel bunkering is charged to the vessel for the provision of fuelling infrastructure and maintenance as well as a fee towards maintaining the fire fighting systems and capabilities		
<b>ADMINISTRATION</b>		
Late vessel booking fee (for bookings made within 72 hours of arrival time)		666
Additional administration levy - Documentation penalty or service charge e.g. Late manifest resulting in the need for TasPorts to re-invoice. The application of the additional administration levy, is at the discretion of TasPorts taking into account reprocessing time <sup>‡</sup>		125

# OTHER SERVICES & FEES

\$ EX GST

## PARKING PERMITS - HOBART#

Macquarie Point	per month or part thereof	250
Daily temporary	per day	50

## OIL SPILL CLEAN UP

Charged on the basis of full cost recovery plus 10%.  
TasPorts' plant and equipment is charged at the full hire rate.

## OTHER

Any other equipment, covered storage and areas of land for cargoes and port related uses	POA
--	-----

Unless otherwise specified or agreed, where there is an arrangement between TasPorts and a customer that TasPorts will incur costs on the customer's behalf, these costs will be on-charged to the customer plus 10%.

## NOTES:

- \* A labour charge may be charged for organised escorts that is not normal operational or maintenance.
- † Includes access to fumigation pad, use of fumigation equipment (Note: fumigator will add service fee to this base price).
- ‡ All wharfage cargo is to be declared by manifest by voyage/trip and should be forwarded to [wharfage@tasports.com.au](mailto:wharfage@tasports.com.au) within two (2) business days of vessel departure, unless otherwise agreed by the parties.
- # Subject to availability.

Services may not be available at all ports. Please contact TasPorts regarding the availability of services.



# SECURITY

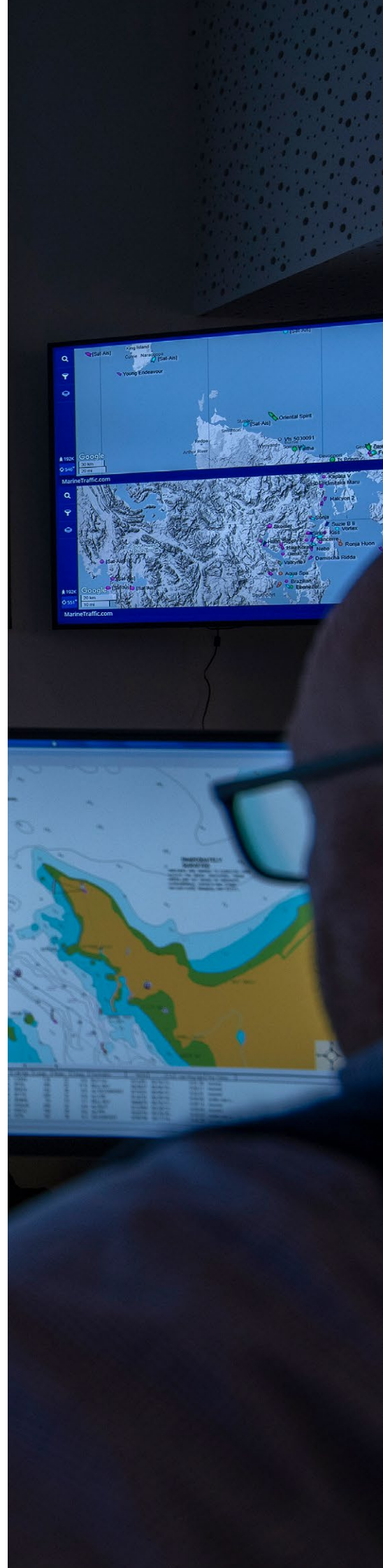
\$ EX GST

SECURITY		
Security/Screening Officer (minimum of four (4) hour charge applies)	per hour or part thereof	95
Security Screening Equipment - passenger and hand luggage screening	per day or part thereof	2,191
Security Screening Equipment Van - checked baggage screening	per van, per day or part thereof	1,845
Under Wharf Security Sweep (visual inspection) - vessels with Waterside Restricted Zone (WRZ)	per vessel arrival	312
Temporary Access Card (TAC) for a MSIC not printed on an integrated access card	per card	33
TasPorts Site Access Pass (SAP) (non regulated sites but access card is required)	per card	131
Crew Identification Access Card (casual crew for domestic home port vessels inside security regulated port)	per card	131
Replacement TAC, SAP or Crew Identification Access Card (original card lost or damaged)	per card	33
Express postage and handling charges for all TAC, SAP and Crew Identification Access Cards	per card	8

## CANCELLATION AND AMENDMENTS

A cancellation charge of four (4) hours applies when security arrangements are cancelled within four (4) hours of start time for which they were booked.

Cancellation of screening equipment bookings less than six (6) hours prior to the equipment booking incurs a 20% fee of original booking period.





# SLIPWAYS

## SLIPWAY CHARGES (\$ EX GST)

LOCATION	HAUL OUT	RETURN TO WATER	HIRE (PER DAY)	POWER (PER DAY WHEN UTILISED)	CLEAN UP
<b>No. 1 Domain</b>	\$3,813 plus \$57 per metre in excess of 30 metres LOA	\$760	\$575 plus \$127 per metre in excess of 22 metres LOA	\$113	<p>If a customer has not complied with the final clean up procedures as notified to them by TasPorts from time to time, then a clean up fee is payable by the customer to TasPorts which is calculated based on:</p> <p>a) TasPorts' labour fees and equipment hire fees (as required) as set out in the Other Services and Other Charges - Equipment parts of this Schedule of Port Charges; and</p> <p>b) any third party fees plus 10%</p> <p>for cleaning up and disposing of any material left at the slip yard.</p>
<b>No. 2 Domain</b>	\$509 plus \$26 per metre in excess of 15 metres LOA	\$381	\$253 plus \$45 per metre in excess of 15 metres LOA	\$104	
<b>No. 3 Domain</b>	\$275	\$99	\$99	\$81	
<b>King Island</b>	\$392	\$196	\$132	\$81	
<b>Flinders Island</b>	\$392	\$196	\$132	\$81	

### NOTES:

Weight limitations apply on all slipways.

# SLIPWAYS

## LABOUR RATES

Labour rates applicable to all slips and work carried out on behalf of Clients between the hours of 0730 – 1630, Monday – Friday

**\$ EX GST**

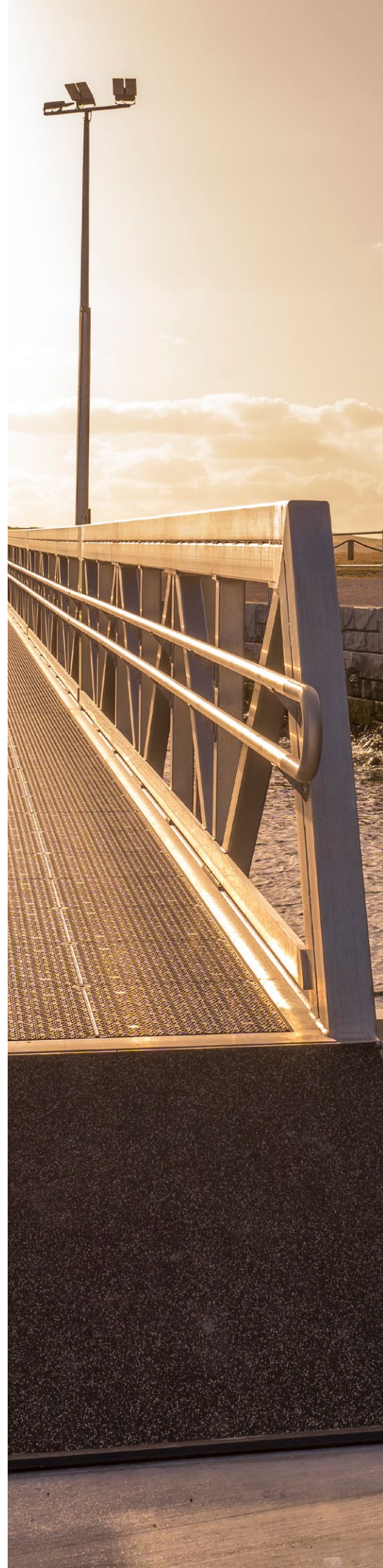
Slipway Supervisor	per hour or part thereof (minimum of four (4) hours)	121
Labourer – general purpose	per hour or part thereof (minimum of four (4) hours)	104
All contracted trades people	Invoiced cost plus 10% will be charged back to the client	POA

Labour provided out of hours on weekdays, weekends and public holidays will be available on request.

## OTHER CHARGES – DOMAIN SLIP

**\$ EX GST**

<b>LAY-UP BERTH</b>		
First 24 hours	per 24 hours or part thereof	110
After first 24 hours	per day, pro-rata in six (6) hour blocks or part thereof	110
<b>OTHER CHARGES</b>		
Wastewater Treatment System & Maintenance Levy - Domain No. 1	per 24 hours or part thereof	288
Wastewater Treatment System & Maintenance Levy - Domain No. 2 and No. 3	per 24 hours or part thereof	100
Workshop space	As determined by the Slipway Supervisor, subject to availability	POA
Pressure washer	per hour or part thereof	52
Waste oil and sludge removal	If required and arranged by the Slipway Supervisor, the invoiced cost plus 10% will be charged back to the client	POA
Crane hire	If required, a crane will be engaged by the Slipway Supervisor and the invoiced cost plus 10% will be charged back to the client	POA
Telehandler	per hour or part thereof	173





# DEVONPORT AIRPORT - AERONAUTICAL

**\$ EX GST**

## LANDING FEES

Non regular public transport, charter, private operator and itinerant users:

### All Aircraft

Fixed wing and rotary wing per landing	\$25 per 1000kg (or pro-rata) of maximum take-off weight  Minimum charge \$25
--	---

### Private Operator - Per Aircraft

<ul style="list-style-type: none"> <li>• Unlimited landings</li> <li>• Privately owned - Aircraft not used in a commercial capacity</li> <li>• Aircraft primarily domiciled at the Devonport Airport</li> <li>• &lt; 2500 kg</li> </ul>	\$580 per annum or pro-rata (quarterly minimum)
---	---

## AIRCRAFT PARKING FEES

Non regular public transport, commercial, charter, private operator and itinerant users:

This schedule of fees does not override any agreements made under leasing arrangements or specific agreements entered into with TasPorts.

Main apron area - all aircraft, between 2100-0600 hours	\$90 per night or part thereof
General Aviation (GA) Area - including grassed areas, between 2100-0600 hours	\$16 per night or part thereof



# DEVONPORT AIRPORT - AERONAUTICAL

\$ EX GST

## AIRCRAFT STORAGE FEES

### Private or Commercial Operator - Per Aircraft - Aircraft Only

<ul style="list-style-type: none"> <li>Aircraft primarily domiciled at the Devonport Airport</li> <li>Aircraft &lt; 2000 kg</li> <li>Parking permitted only in GA area</li> </ul>	\$400 per annum or pro-rata (quarterly minimum)
---	---

### Private or Commercial Operator - Trailerised Aircraft Storage - Per Trailerised Aircraft Storage Unit

<ul style="list-style-type: none"> <li>Aircraft primarily domiciled at the Devonport Airport</li> <li>Aircraft &lt; 2000 kg</li> <li>Parking permitted only on GA grassed area and at location determined by Airport Operator</li> </ul>	\$450 per annum or pro-rata (quarterly minimum)
--	---

## GROUND HANDLING EQUIPMENT (E.G. CARGO LOADING/DISCHARGING)

Airside Reporting Officer (ASIC escort)	per Officer per hour or part thereof	\$100
Forklift hire (3 tonne)	per hour or part thereof	\$100
Dolly and UTV	per 2 hour period or part thereof	\$100
Aircraft service stairs	per 24 hour period or part thereof	\$150

Airside Reporting Officers are on duty and available between 0630-2130hrs





**TASMANIAN PORTS  
CORPORATION PTY LTD  
(TASPORTS)**

[www.tasports.com.au](http://www.tasports.com.au)  
**1300 366 742**

ABN 82 114 161 938

**LAUNCESTON OFFICE**

90 Willis Street, Launceston\*  
PO Box 1060, Launceston 7250

\* Registered Office

**HOBART OFFICE**

Levels 5 & 6, Marine Board Building,  
1 Franklin Wharf, Hobart  
GPO Box 202, Hobart 7000

**PORT OF BELL BAY**

Mobil Road, Bell Bay  
Locked Bag 4, George Town 7253

**PORT OF BURNIE**

Port Road, Burnie  
PO Box 216, Burnie 7320

**PORT OF DEVONPORT**

48 Formby Road, Devonport  
PO Box 478, Devonport 7310

**PORT OF HOBART**

Ground Floor,  
Port Tower Building, Hobart  
GPO Box 202, Hobart 7000

**PORT OF STANLEY**

Wharf Road, Stanley 7331

**DEVONPORT AIRPORT**

Airport Road, Devonport 7307

**FLINDERS ISLAND**

Lady Barron, Flinders Island 7255

**KING ISLAND**

285 Grassy Harbour Road,  
Grassy, King Island  
PO Box 341, Currie, King Island 7256

**PRICING AND NEW BUSINESS ENQUIRIES**

Telephone: **1300 366 742**

Email: [commercial@tasports.com.au](mailto:commercial@tasports.com.au)

